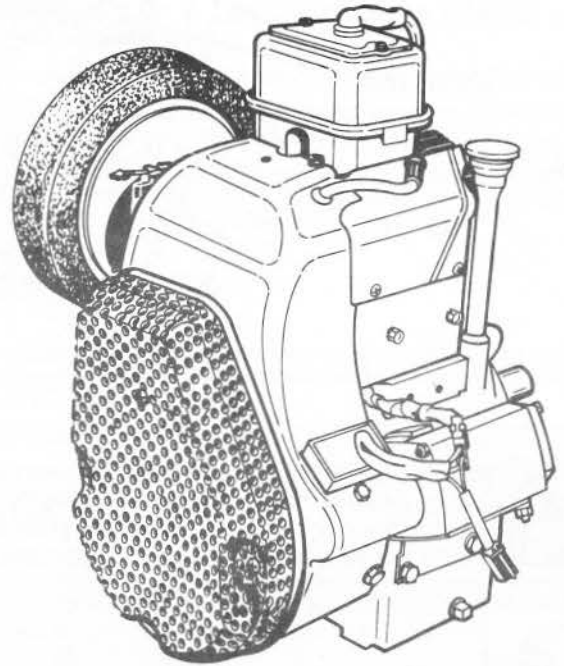
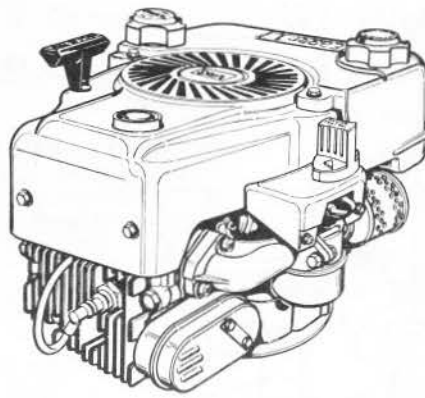


Sears

**owner's
manual**

MODEL NO. 143.726182

Ser 3104D



Sears

CRAFTSMAN®

CAUTION:

Read RULES for
Safe OPERATION
and INSTRUCTIONS
Carefully

ENGINE

- Operating
- Maintenance
- Repair Parts

Sold by SEARS, ROEBUCK AND CO., Chicago, IL. 60684 U.S.A.
and SIMPSONS - SEARS LIMITED, Toronto, Ontario, Canada.

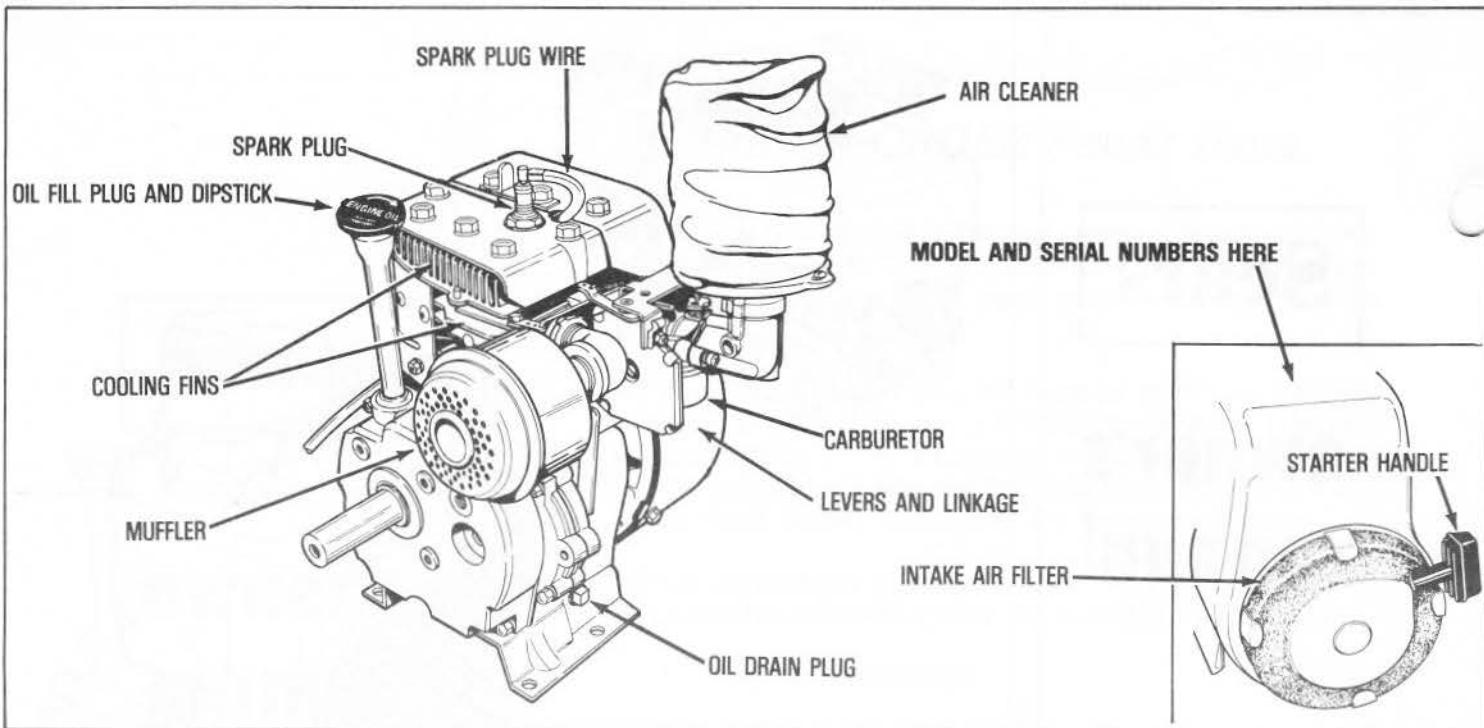


Figure 1



THIS SYMBOL POINTS OUT IMPORTANT SAFETY INSTRUCTIONS WHICH IF NOT FOLLOWED COULD ENDANGER THE PERSONAL SAFETY AND/OR PROPERTY OF YOURSELF AND OTHERS. READ AND FOLLOW ALL INSTRUCTIONS IN THIS MANUAL AND ANY PROVIDED WITH THE EQUIPMENT ON WHICH THIS ENGINE IS USED BEFORE ATTEMPTING TO OPERATE YOUR CRAFTSMAN ENGINE.



THE FOLLOWING SYMBOLS MAY APPEAR ON YOUR ENGINE:



FAST



SLOW



STOP



FULL



OFF

CHOKE

OIL & FUEL RECOMMENDATIONS

To start and operate your Craftsman engine, you will need the following:

- 1 **A CLEAN, HIGH QUALITY, DETERGENT OIL.** Be sure original container is marked with engine service classification "SC," "SD," "SE" OR "SF."

DO NOT USE SAE10W40 OIL.

FOR SUMMER (ABOVE 32°F) USE SAE 30 OIL.
(SAE 10W30 is an acceptable substitute.)

FOR WINTER (BELOW 32°F) USE SAE 5W20 or 5W30 OIL.
(SAE 10W is an acceptable substitute.)

Oil Sump capacity is approximately 19 ounces (1-1/8 pints).

- 2 **A FRESH, CLEAN, UNLEADED AUTOMOTIVE GASOLINE.** (Leaded "Regular" grade gasoline is an acceptable substitute).

DO NOT USE GASOHOL.

NOTE: Use clean oil and fuel and store in approved, clean, covered containers. Use clean fill funnels.

IMPORTANT

KEEP THIS MANUAL HANDY AT ALL TIMES FOR FUTURE REFERENCE. READ IT CAREFULLY AND FAMILIARIZE YOURSELF WITH THE OPERATING AND MAINTENANCE AND SAFETY INSTRUCTIONS. THIS MANUAL ALSO CONTAINS A COMPLETE PARTS LISTING.

PRE-START INSTRUCTIONS

- 1 Read all instructions provided with the equipment on which this engine is used.
- 2 **FILL OIL SUMP WITH OIL.** See preceding "OIL & FUEL RECOMMENDATIONS," Item 1 for correct oil and Figure 1 for oil fill locations.
POSITION EQUIPMENT SO ENGINE IS LEVEL. Remove OIL FILL PLUG and DIPSTICK and place it on a clean surface.
Fill oil sump, slowly, to "full" mark on DIPSTICK. DO NOT OVERFILL. OIL FILL PLUG must be seated fully and tightened and locked securely into oil fill hole when checking oil level.
- 3 Oil level should be checked frequently during initial engine break-in period. OIL FILL PLUG must be seated fully and tightened and locked securely into oil fill hole when engine is running.
- 4 **FILL FUEL TANK** with gasoline as specified in the preceding "OIL & FUEL RECOMMENDATIONS," Item 2.

NEVER MIX OIL WITH GASOLINE

Never use "stale" gasoline left over from last season or stored for long periods.



NEVER FILL FUEL TANK INDOORS. NEVER FILL FUEL TANK WHEN ENGINE IS RUNNING OR WHILE ENGINE IS HOT.



NEVER FILL FUEL TANK COMPLETELY. FILL TANK WITHIN 1/4 TO 1/2 INCH OF TOP OF TANK TO PROVIDE SPACE FOR FUEL EXPANSION. WIPE ANY FUEL SPILLAGE FROM ENGINE AND EQUIPMENT BEFORE STARTING ENGINE.

PRE-START INSTRUCTIONS (Continued)

5 CHECK THE FOLLOWING before attempting to start your engine:

A. **BE SURE EQUIPMENT IS IN NEUTRAL GEAR WITH CLUTCHES, BELTS, CHAINS, ETC., DISENGAGED. (FOLLOW EQUIPMENT MANUFACTURER'S INSTRUCTIONS.) THIS SHOULD PLACE ANY SAFETY SWITCHES IN SAFE STARTING POSITION.**

B. Be sure SPARK PLUG WIRE is attached to SPARK PLUG. (see Figure 1)

C. Be sure any ignition switch on engine or equipment is in ON, RUN or START position.

D. Be sure FUEL FILL CAP air vent is open.

STARTING INSTRUCTIONS

NEVER RUN ENGINE INDOORS OR IN ENCLOSED, POORLY VENTILATED AREAS. ENGINE EXHAUST CONTAINS CARBON MONOXIDE, AN ODORLESS AND DEADLY GAS.

KEEP HANDS, FEET, HAIR AND LOOSE CLOTHING AWAY FROM ANY MOVING PARTS ON ENGINE AND EQUIPMENT.

WARNING — TEMPERATURE OF MUFFLER AND NEAR-BY AREAS MAY EXCEED 150°F (65°C). AVOID THESE AREAS.

1 COLD ENGINE START (Engine has not been run recently).

A. Move remote control on equipment to CHOKE (see equipment manufacturers instructions).

B. START ENGINE

1. Grasp STARTER HANDLE (see Figure 2) and pull rope out, slowly, until it pulls harder due to engine compression. Let rope rewind slowly.

2. Pull rope with a rapid continuous full arm stroke. Let rope rewind SLOWLY. Don't let STARTER HANDLE snap back against starter.

3. Repeat preceding Instructions 1 and 2 until engine fires and when engine starts, move equipment control to FAST position.

If engine falters, move equipment control to CHOKE until engine runs smoothly and then to FAST.

NOTE: If engine fires, but fails to start, move equipment control to FAST and repeat preceding Instructions 1 and 2 until engine starts.

If engine fires, but fails to start again, repeat preceding Instructions 1, 2 and 3 until engine starts.

2 WARM ENGINE START (Engine still warm from recent running).

NOTE — Warm engine may start without choking.

A. Move remote control on equipment to FAST.

B. START ENGINE

1. Grasp STARTER HANDLE (see Figure 2) and pull rope out, slowly, until it pulls harder due to engine compression. Let rope rewind slowly.

2. Pull rope with a rapid continuous full arm stroke. Let rope rewind SLOWLY. Don't let STARTER HANDLE snap back against starter.

3. Repeat preceding Instructions 1 and 2 until engine starts.

If engine falters, move equipment control to CHOKE until engine runs smoothly and then to FAST.

NOTE: If engine fails to start after a reasonable number of starting attempts, follow preceding "1 COLD ENGINE START" instructions.

TO STOP ENGINE

1 Move remote control on equipment or any ignition stop switch on engine to STOP or OFF position (see equipment manufacturer's instructions).

2 AFTER ENGINE IS STOPPED:

A. **DISCONNECT SPARK PLUG WIRE FROM SPARK PLUG AND PLACE IT WHERE IT CAN NOT CONTACT SPARK PLUG.**

B. **TURN IGNITION SWITCH KEY IF SO EQUIPPED, TO "OFF" POSITION AND REMOVE KEY FROM SWITCH. THIS WILL REDUCE THE POSSIBILITY OF UNAUTHORIZED STARTING OF ENGINE WHILE EQUIPMENT IS NOT IN USE.**

C. **NEVER STORE ENGINE WITH FUEL IN TANK INDOORS OR IN ENCLOSED, POORLY VENTILATED ENCLOSURES, WHERE FUEL FUMES MAY REACH AN OPEN FLAME, SPARK OR PILOT LIGHT AS ON A FURNACE, WATER HEATER, CLOTHES DRYER, ETC.**

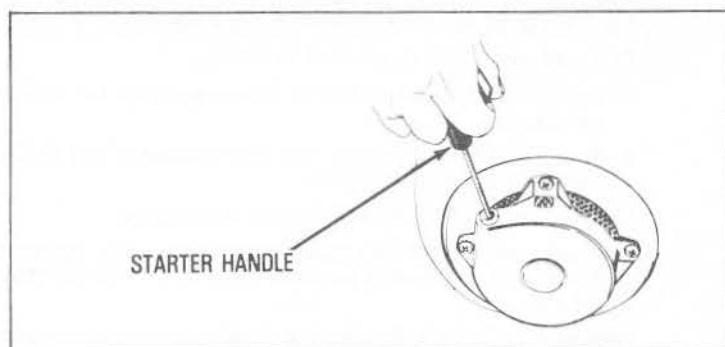


Figure 2

MAINTENANCE

WARNING — TEMPERATURE OF MUFFLER AND NEAR-BY AREAS MAY EXCEED 150°F (65°C.) AVOID THESE AREAS.

1 CHECK OIL LEVEL REGULARLY.

POSITION EQUIPMENT SO ENGINE IS LEVEL.

Check level every five (5) operating hours or each time equipment is used. Always clean area around OIL FILL PLUG (see Figure 1) before removing plug, to avoid contaminating oil with dirt, grass clippings, etc. Add oil as necessary. **DO NOT RUN ENGINE UNLESS PROPER OIL LEVEL IS MAINTAINED. LEVEL MUST BE BETWEEN "FULL" AND "ADD" MARK ON DIPSTICK.** See Instructions 2 and 3 in preceding "PRE-START INSTRUCTIONS" (Page 1).

2 CHANGE OIL — after first two (2) hours of operation and every twenty-five (25) hours thereafter, or more often if operated in extremely dusty or dirty areas.

DRAIN OIL — Position equipment so that engine OIL DRAIN PLUG (see Figure 1) is lowest point on engine. Remove OIL DRAIN PLUG and OIL FILL PLUG (while engine is still warm) and allow oil to drain completely.

Replace OIL DRAIN PLUG and tighten securely. Refill oil sump with new oil of proper viscosity and service classification per preceding "OIL & FUEL RECOMMENDATIONS" (Page 1). Replace OIL FILL PLUG and tighten securely. See Instructions 2 and 3 in preceding "PRE-START INSTRUCTIONS" (Page 1).

3 SERVICE AIR CLEANER (see Figure 3)

PRE-FILTER (Cloth):

- Remove and wash in water and detergent solution every ten (10) operating hours or more often if used in extremely dusty or dirty conditions.
- Rinse thoroughly in clear water.
- Dry thoroughly.

FILTER (Paper):

Replace FILTER once a year or more often if used in extremely dusty or dirty conditions.

DO NOT ATTEMPT TO CLEAN OR OIL FILTER.

Replacement FILTERS are available at any Sears Roebuck and Co. (or Simpsons-Sears Limited) Service Center.

To install new FILTER, proceed as follows:

- Loosen two COVER SCREWS (These need not be removed completely).
- Turn COVER counterclockwise and remove it and FILTER from BASE. Discard FILTER.
- Clean inside of BASE and COVER thoroughly.
- Insert new FILTER into COVER and reassemble COVER to BASE as it was before removal. Tighten COVER SCREWS securely.

Replace PRE-FILTER. Be sure it is completely dry before replacing.

Pull PRE-FILTER elastic band over one ear of BASE and COVER.

NEVER RUN ENGINE WITHOUT COMPLETE AIR CLEANER INSTALLED ON ENGINE.

4 **CLEAN COOLING SYSTEM** frequently, by removing any build-up of grass, dirt or other debris from the cylinder and cylinder head COOLING FINS, AIR INTAKE SCREEN and carburetor governor LEVERS AND LINKAGE. This will help insure adequate cooling and correct engine speed and will reduce the possibility of overheating and mechanical damage.

5 INTAKE AIR FILTER (see Figure 1)

Clean every 4 to 8 hours. Proceed as follows:

- Remove and tap lightly.
- Knead with hands to remove any remaining dirt. Air pressure may also be used, if available.
- Replace on engine.

6 SPARK PLUG (see Figure 1)

Clean and reset gap periodically. Clean area around SPARK PLUG base, prior to removal, to prevent dirt from entering engine. Replace SPARK PLUG if electrodes are pitted or burned or if porcelain is cracked. Clean SPARK PLUG by carefully scraping electrodes (do not wire brush or sand blast). Be sure entire SPARK PLUG is clean and free of foreign material. Check electrodes gap with wire feeler gauge and reset gap to .030 if necessary. If replacing SPARK PLUG, use Champion J-8 or J-17LM or equivalent (see note below) and tighten to 15 foot pounds or if lacking torque wrench tighten firmly.

NOTE: If your engine is equipped with a Champion RJ-17LM resistor spark plug, it is in compliance with the Radio Noise Limitations Order (Radio Frequency Interference) issued by the Ministry of Communications of the Canadian Telecommunications Regulations Branch.

COMPLIANCE WITH RADIO INTERFERENCE REGULATIONS CERTIFIED.

CERTIFIE CONFORME AU REGLEMENT SUR LE BROUILLAGE RADIO ELECTRIQUE.

To remain in compliance, a Champion RJ-17LM resistor spark plug must be used for any replacement.

7 **CHECK ENGINE AND EQUIPMENT FREQUENTLY FOR LOOSE NUTS, BOLTS, ATTACHMENTS, ETC., AND KEEP THESE ITEMS TIGHTENED.**

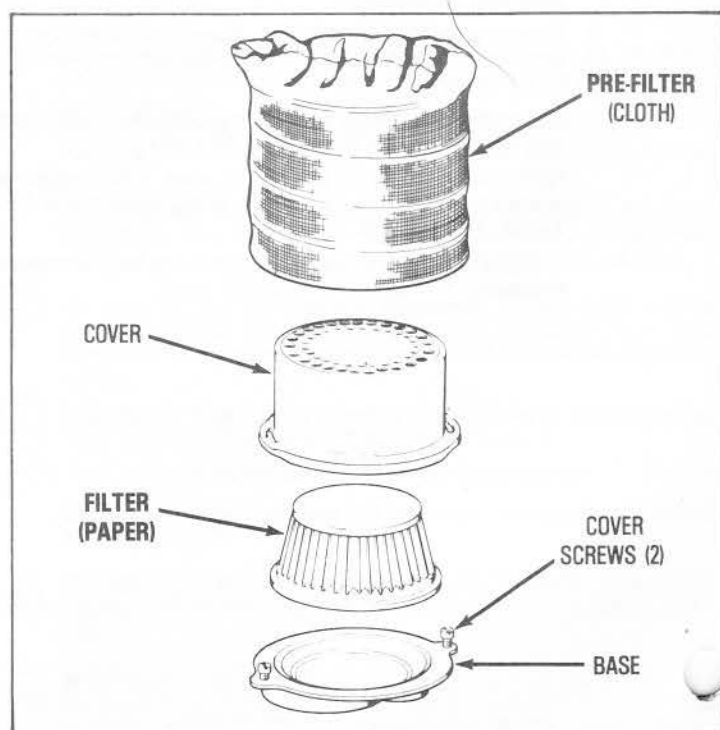


Figure 3

ADJUSTMENTS

DO NOT MAKE UNNECESSARY ADJUSTMENTS. FACTORY SETTINGS ARE SATISFACTORY FOR MOST APPLICATIONS AND CONDITIONS. IF ADJUSTMENTS ARE NEEDED, PROCEED AS FOLLOWS:

1 CARBURETOR ADJUSTMENTS (see Figure 4)

- A. HIGH SPEED ADJUST NEEDLE is pre-set at the factory. (1-1/2 turns open) Re-adjustment should not be necessary.
- B. Close IDLE ADJUST NEEDLE by turning clockwise. Close finger tight only. Forcing may cause damage.
- C. Open IDLE ADJUST NEEDLE by turning 1-1/4 turns counterclockwise.
- D. Start engine. Follow preceding STARTING INSTRUCTIONS. Run engine a few minutes to warm it up.
- E. With engine running at IDLE speed, adjust IDLE ADJUST NEEDLE 1/8 turn at a time, clockwise and counterclockwise, until engine runs smoothly.

Allow several seconds between each adjustment for engine to adapt to new setting.

2 NEVER TAMPER WITH ENGINE GOVERNOR WHICH IS FACTORY SET FOR PROPER ENGINE SPEED. OVER-SPEEDING ENGINE ABOVE FACTORY HIGH SPEED SETTING CAN BE DANGEROUS.

FOR ANY MAJOR ADJUSTMENTS OR REPAIRS, CONTACT YOUR NEAREST SEARS ROEBUCK AND CO. (OR SIMPSONS-SEARS LIMITED) SERVICE CENTER.

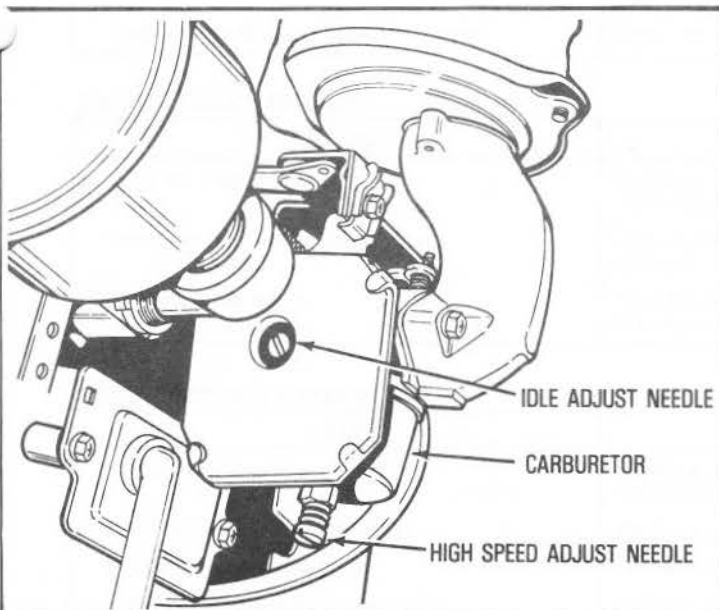


Figure 4

STORAGE

NEVER STORE ENGINE WITH FUEL IN TANK INDOORS OR IN ENCLOSED, POORLY VENTILATED ENCLOSURES, WHERE FUEL FUMES MAY REACH AN OPEN FLAME, SPARK OR PILOT LIGHT AS ON A FURNACE, WATER HEATER, CLOTHES DRYER, ETC.

If engine is to be un-used for 30 days or more, prepare as follows:

- 1 Remove all gasoline from CARBURETOR and FUEL TANK to prevent gum deposits from forming on these parts and causing possible malfunction of engine.

DRAIN FUEL INTO APPROVED CONTAINER OUTDOORS, AWAY FROM OPEN FLAME.

- A. Run engine until FUEL TANK is empty and engine stops due to lack of fuel.

- B. Disconnect FUEL LINE at CARBURETOR or FUEL TANK. Be very careful not to damage FUEL LINE, Fittings or FUEL TANK. Drain any remaining fuel from System

- 2 If oil has not been changed recently, this may be a good time to do it. See "CHANGE OIL" instructions in "MAINTENANCE" section.

- 3 Remove SPARK PLUG and pour one (1) ounce (0,029 Liter) of engine oil into spark plug hole. Crank engine over, slowly, several times.

AVOID SPRAY FROM SPARK PLUG HOLE WHEN CRANKING ENGINE OVER SLOWLY.

Replace SPARK PLUG.

- 4 Clean engine by removing any clippings, dirt, or chaff from exterior of engine.

GENERAL

Just as your automobile needs professional mechanical maintenance from time to time, so does your Craftsman engine. Replacement of the spark plug and ignition points is made necessary by NORMAL use. Professional Air-Cooled Engine Service is as close as your nearest Sears Roebuck and Co. (or Simpsons-Sears Limited) Service Center.

A yearly check-up or tune-up by Sears is a good idea to avoid breakdowns or delay . . . do it at the end of the season, then you're ready for the next. We even prepare it for storage for you.

Faint, illegible text, likely bleed-through from the reverse side of the page.



TROUBLESHOOTING

THE FOLLOWING MAY HELP AVOID A DELAY IN YOUR WORK OR SAVE THE EXPENSE OF A SERVICE CALL.

ENGINE FAILS TO START OR STARTS WITH DIFFICULTY

CAUSE	REMEDY
Controls not in start position.	Move ENGINE CONTROL or equipment control to "HI" or START position. See "STARTING INSTRUCTIONS" in this manual.
Spark plug wire disconnected from spark plug.	Connect spark plug wire to spark plug.
Spark plug fouled.	Remove spark plug and clean. See "SPARK PLUG" instructions in "MAINTENANCE" section in this manual.
Spark plug porcelain cracked.	Replace spark plug.
Insufficient fuel.	Fill fuel tank per "PRE-START INSTRUCTIONS".
Water or dirt in fuel.	Drain fuel tank and re-fill with clean, fresh gasoline. See "PRE-START INSTRUCTIONS" in this manual.
Improper carburetor adjustment.	Adjust carburetor (if applicable). See "ADJUSTMENTS" section in this manual.
Fuel fill cap air vent hole obstructed.	Open air vent hole in top of fuel fill cap.

ENGINE LACKS POWER

CAUSE	REMEDY
Dirty air cleaner.	Replace or clean air cleaner per "SERVICE AIR CLEANER" in "MAINTENANCE" section in this manual.
Improper carburetor adjustment.	Adjust carburetor (if applicable). See "ADJUSTMENTS" section in this manual.
Lack of lubrication.	Fill oil sump to proper level. See "PRE-START INSTRUCTIONS" section in this manual.

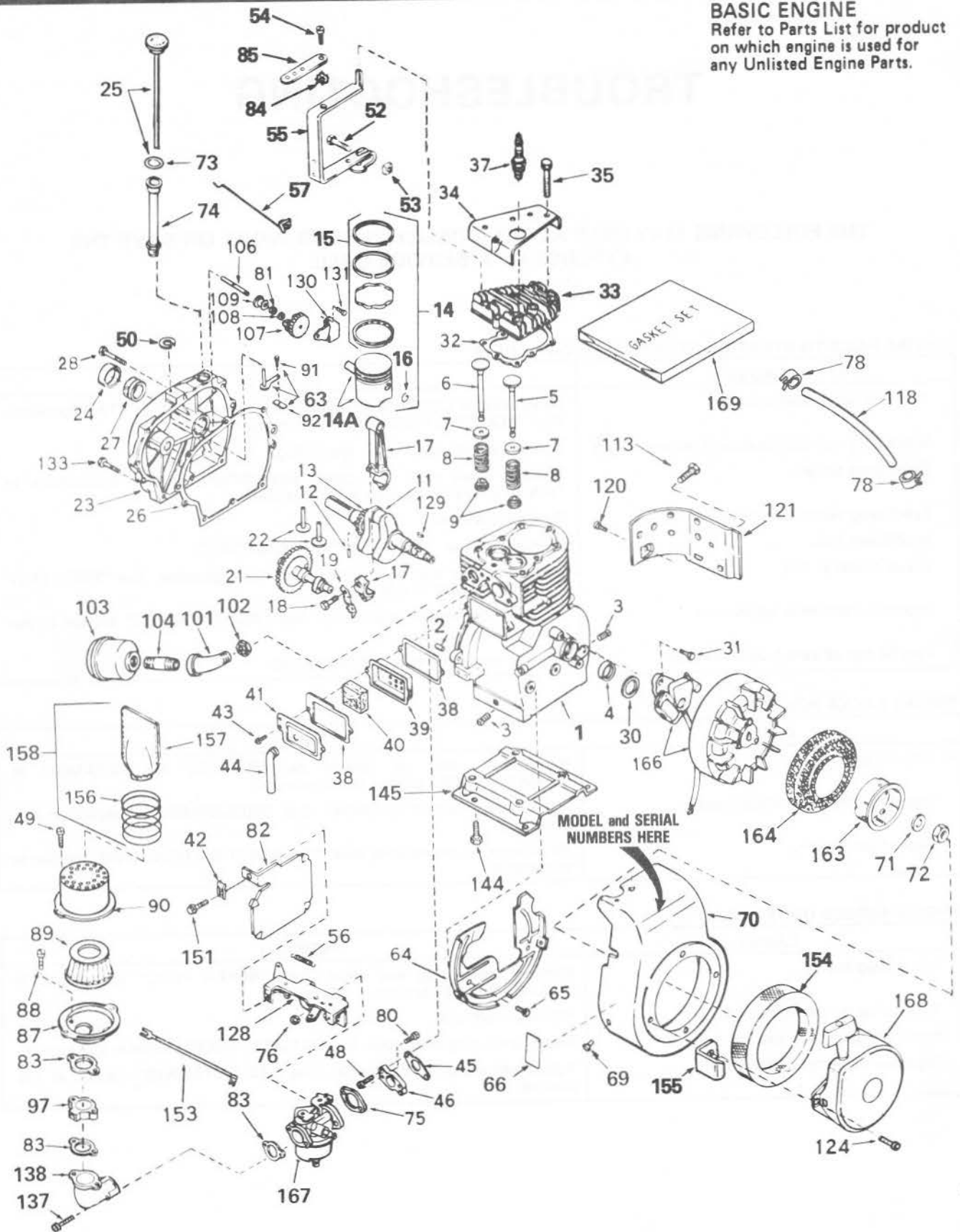
ENGINE MISSES UNDER LOAD

CAUSE	REMEDY
Spark plug fouled.	Remove spark plug and clean. See "SPARK PLUG" instructions in "MAINTENANCE" section in this manual.
Spark plug porcelain cracked.	Replace spark plug.
Improper spark plug gap.	Regap spark plug electrodes. See "MAINTENANCE" section in this manual.
Improper carburetor adjustment.	Adjust carburetor (if applicable). See "ADJUSTMENTS" section in this manual.

CRAFTSMAN 4-CYCLE ENGINE

MODEL NUMBER: 143.726182

BASIC ENGINE
Refer to Parts List for product
on which engine is used for
any Unlisted Engine Parts.



another free manual from www.searstractormanuals.com

CRAFTSMAN 4-CYCLE ENGINE

MODEL NUMBER: 143.726182

Ref. No.	Part No.	Part Name	Ref. No.	Part No.	Part Name
1	32586B	Cylinder Assy. (Incl. Nos. 2, 3 & 4)	49	650152	Screw, Fil. hd. Sems, 8-32 x 3/8
2	27652	Pin, Dowel	50	29642	Ring, Retaining
3	27642	Plug, Sq. hd. pipe (oil drain)	52	29826	Screw, Hex washer hd., 10-32 x 3/4
4	32630	Seal, Oil	53	29216	Lock Nut, Hex "Keps" 10-32
5	32783	Valve, Intake (Std.) (Incl. No. 9)	54	650548	Screw, Hex washer hd., 8-32 x 5/16
5	32784	Valve, Intake (1/32" oversize) (Incl. No. 9)	55	32326A	Governor Lever Assy.
6	27878A	Valve, Exhaust (Std.) (Incl. No. 9)	56	30826	Spring, Extension
6	27880A	Valve, Exhaust (1/32" oversize) (Incl. No. 9)	57	30824	Link, Governor-to-throttle
7	27882	Cap, Upper valve spring	63	30699C	Rod Assy., Governor (Incl. Nos. 91 & 92)
8	27881	Spring, Valve	64	29536	Baffle, Blower housing
9	32581	Cap, Lower valve spring	65	650561	Screw, Hex washer hd. Durlok, 1/4-20 x 5/8
11	34889	Crankshaft Assy. (Incl. Nos. 12 & 13)	66	34374	Decal, Instruction
12	29783	Pin, Groove	69	29747A	Screw, Hex hd. Sems, 5/16-24 x 3/4
13	27884	Gear, Crankshaft	70	32158D	Housing, Blower
14	34517	Piston, Pin & Ring Assy. (Incl. Nos. 14A, 15 & 16) (Std.)	71	650815	Washer, Belleville
14	34518	Piston, Pin & Ring Assy. (Incl. Nos. 14A, 15 & 16) (.010 oversize)	72	8116	Nut, Crankshaft
14	34519	Piston, Pin & Ring Assy. (Incl. Nos. 14A, 15 & 16) (.020 oversize)	73	33590	"O" Ring
14A	32592B	Piston & Pin Assy. (Incl. No. 16) (Std.)	74	33893A	Tube, Oil filler
14A	32593B	Piston & Pin Assy. (Incl. No. 16) (.010 oversize)	75	*31688	Gasket, Carburetor
14A	32594B	Piston & Pin Assy. (Incl. No. 16) (.020 oversize)	76	29752	Nut & Lockwasher Assy., 1/4-28
15	32595	Ring Set, Piston (Std.)	78	26460	Clamp, Fuel line
15	32596	Ring Set, Piston (.010 oversize)	80	650572	Screw, Flat hd. Sems, 1/4-28 x 1-1/8
15	32597	Ring Set, Piston (.020 oversize)	81	30590A	Washer, Flat
16	27888	Ring, Piston pin retaining	82	30820	Baffle, Heat
17	32591C	Rod Assy., Connecting (Incl. Nos. 18 & 19)	83	*27272	Gasket, Air cleaner
18	650662B	Screw, Connecting rod	84	29918	Lockwasher No. 8 E.T.
19	34242	Dipper, Oil	85	30205	Bracket, Governor adjusting
21	32115	Camshaft (Mech. Compression Release)	87	31691	Bracket, Air cleaner
22	34034	Lifter, Valve	88	650521	Screw, Fil. hd. Sems, 10-32 x 1-1/8
23	31303B	Cover, Cylinder (Incl. Nos. 24, 27 & 106)	89	30727	Element, Air cleaner
24	28427	Seal, Oil	90	31715	Body Assy., Air cleaner
25	34011A	Dipstick, Oil (Incl. No. 73)	91	650494	Screw, Fil. hd. Sems, 6-40 x 5/16
26	*30684	Gasket, Cylinder cover	92	30700	Yoke, Governor
27	31546	Bushing, Crankshaft	97	30936	Flange, Air cleaner
28	650488	Screw, Hex hd. Sems, 1/4-20 x 1-1/4	101	29574	Elbow, 90°
30	33876	Gasket, Stator	102	32862	Nut, Conduit
31	650489	Screw, Hex hd. Sems, 1/4-20 x 5/8	103	29633	Muffler
32	*32631	Gasket, Cylinder head	104	32332	Nipple, Exhaust pipe
33	30938A	Head, Cylinder	106	31845	Shaft, Mechanical governor
34	30939A	Cover, Cylinder head	107	30591	Gear Assy., Governor (Incl. No. 81)
35	650697A	Screw, Hex flange hd., 5/16-18 x 2-1/2	108	29193	Ring, Retaining
37	33636	Plug, Spark (Champion J-8 or equivalent) <u>Except for Canada</u>	109	30588A	Spool, Governor
37	34251	Resistor Spark Plug (Canadian Regulations require RJ-17LM resistor spark plug)	113	30688	Screw, Hex hd. Sems, 1/4-20 x 1/2
38	*27896	Gasket, Valve spring cover	118	30962	Line, Fuel
39	28423	Body Assy, Breather	120	650128	Screw, Fil. hd. Sems, 10-24 x 1/2
40	28424	Element, Breather	121	30622	Extension, Blower housing
41	28425	Cover, Valve spring	124	29716	Screw, Pan hd. Sems, 1/4-28 x 7/16
42	27793	Clip, Conduit	128	33110A	Control Assy., Remote Speed (Incl. No. 56)
43	650128	Screw, Fil. hd. Sems, 10-24 x 1/2	129	32589	Key, Flywheel
44	27627	Tube, Breather	130	31843A	Bracket, Governor gear
45	*27915	Gasket, Intake	131	28763	Screw, Hex washer hd. shake-proof, 10-32 x 19/32
46	30195A	Flange, Carburetor (Incl. Nos. 76 & 80)	133	650493	Screw, Hex hd. Sems, 1/4-20 x 1-3/4
48	30196	Screw, Fil. hd., 5/16-18 x 3/4	137	650163	Screw, Fil. hd. Sems, 10-32 x 7/8
			138	31431	Elbow, Air cleaner
			144	650542	Screw, Hex hd. 5/16-18 x 3/4
			145	31757	Base, Engine mounting
			151	28942	Screw, Hex washer hd. Sems, 10-32 x 3/8
			153	31902	Wire, Ground
			154	32203	Air cleaner, Starter
			155	32204	Bracker, Starter air cleaner
			156	31667	Spring, Pre-cleaner bag

*Indicates Parts Included in Gasket Set, Ref No. 169.

CRAFTSMAN 4-CYCLE ENGINE

MODEL NUMBER: 143.726182

Ref. No.	Part No.	Part Name	Ref. No.	Part No.	Part Name
157	31668	Bag, Pre-cleaner	167	631454	Carburetor (Incl. No. 75)
158	730512	Kit, Pre-cleaner (Incl. Nos. 156 & 157)	168	590420	Starter Assy., Rewind
163	32125	Cup, Starter	169	33239	Gasket Set (Incl. items marked *)
164	590417	Screen, Starter cup		181-383-11	Owners Manual
166	611038	Magneto (The complete magneto is not available as an assembly. The magneto number is shown for reference purposes only. Order component parts individually as shown in parts list.)			*Indicates Parts Included in Gasket Set, Ref No. 169

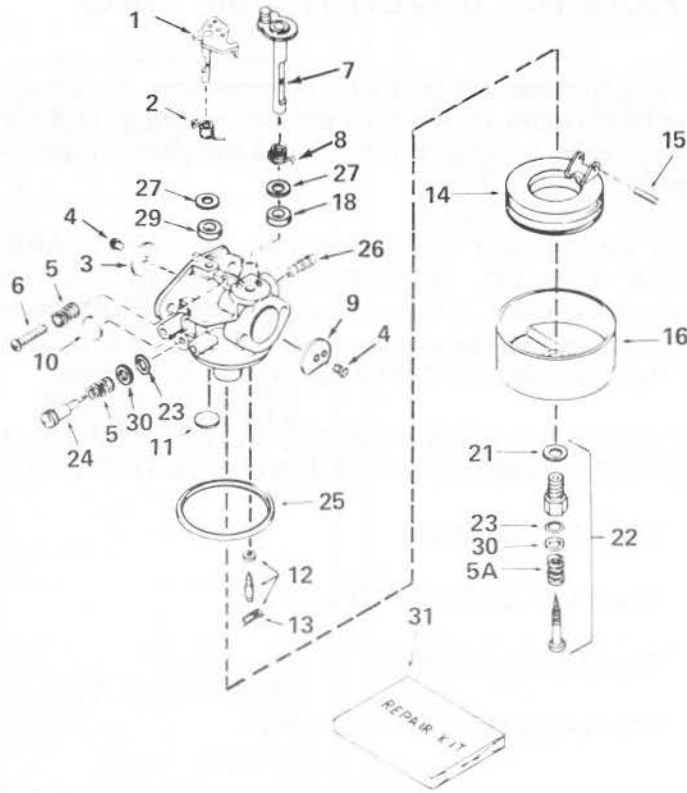
MAGNETO NO. 611038

The diagram shows an exploded view of the magneto assembly. Part 1 is the flywheel with magnets. Part 2 is a spring, 3 is a dust cover, 4 is a contact assembly, 5 is a terminal washer, 6 is a ground terminal tab, 7 is a terminal nut, 8 is a screw and washer for the breaker, 9 is a condenser screw, 10 is a coil assembly, 11 is a lead wire, 12 is a condenser, 13 is a core and plate, 14 is a stator assembly, 15 is a felt cam wiper, 16 is a clip, 17 is a coil locking, and 18 is a dust cover gasket.

The complete magneto is not available as an assembly. The magneto number is shown for reference purposes only. Order component parts individually, as shown in parts list

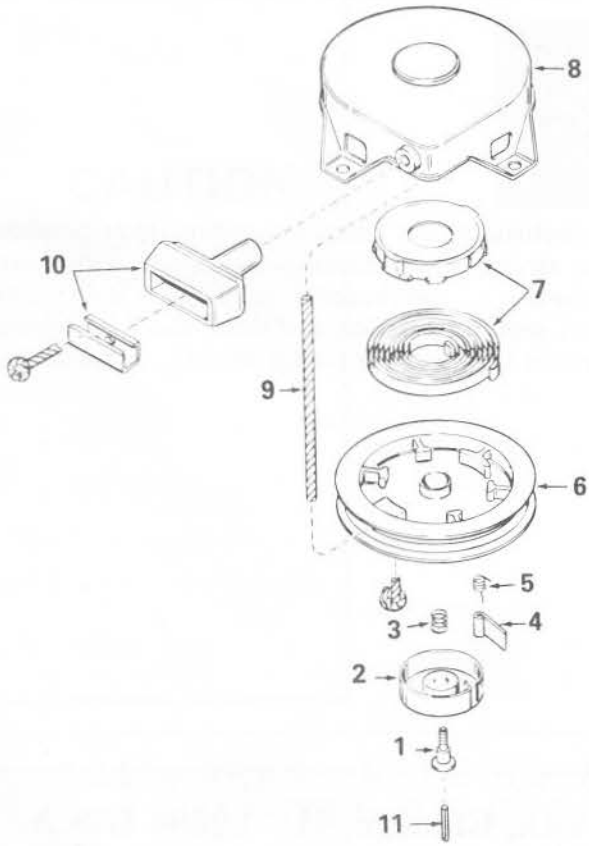
Ref. No.	Part No.	Part Name
1	611038	Magneto
	611037	Flywheel
2	30551	Spring, Breaker box dust cover
3	610947	Cover, Dust
5	30547A	Contact Assembly, Breaker
6	610385	Washer, Terminal
7	33356	Tab, Ground terminal
8	610408	Nut, Terminal
9	29181	Screw & Washer, Breaker
10	610593	Screw, Condenser
11	30560A	Coil Assy. (Incl. No. 12)
12	30554	Wire, Lead
13	30548B	Condenser
14	30545	Core & Plate
15	30561B	Stator Assy. (Incl. Nos. 2 thru 11, 13, 14, 16, 17 & 19)
16	30549	Felt, Cam wiper
17	31311	Clip, Coil locking
19	610957	Gasket, Dust cover

CARBURATOR NO. 631454



Ref. No.	Part No.	Part Name
	631454	Carburetor
1	31834	Shaft & Lever Assy., Throttle
2	631767	Spring, Throttle return
3	631036	Shutter, Throttle
4	650506	Screw, Rd. hd., 4-40 x 3/16
5	630766	Spring, Idle regulating screw
5A	630738	Spring, Main Adjustment screw
6	650417	Screw, Idle regulating
7	31842	Shaft & Lever Assy., Choke
8	630757A	Spring, Choke return
9	31837	Shutter, Choke
10	*630748	Plug, Welch
11	*631027	Plug, Welch
12	*631021	Inlet Needle, Seat & Clip Assy. (Incl. No. 13)
13	631022	Clip, Inlet needle
14	632019	Float, Carburetor
15	*631024	Shaft, Float
16	631867	Bowl, Float
18	631183	Washer, Felt
21	27110	Gasket, Bowl-to-body
22	*31839	Adjustment Screw Assy., Main (Incl. Nos. 5A, 21, 23 & 30)
23	*630740	"O" Ring, Adjustment screw
24	*631078	Screw, Idle adjustment
25	*631028	Gasket, Bowl-to-body
26	632164	Fitting, Fuel inlet
27	631184	Washer, Flat
29	631971	Seal, Dust
30	630739	Washer, Flat
31	31840	Repair Kit (Incl. items marked *)

REWIND STARTER NO. 590420



Ref. No.	Part No.	Part Name
	590420	Starter, Rewind
1	590409A	Screw, Retainer
2	590410	Retainer, R.H.
3	590411	Spring, Brake
4	590148	Dog, Starter
5	590412	Spring, R.H. dog
6	590413A	Pulley
7	590414	Spring & Keeper Assy.
8	590536	Housing Assy., Starter (Incl. No. 1)
9	590451A	Rope, Starter
10	590387	Handle Assy., Starter
11	590459	Pin, Centering

another free manual from www.searstractormaterials.com

Sears

**owner's
manual**

MODEL NO. 143.726182

How to ORDER Repair Parts

The Model Number will be found stamped into the blower housing (See Figure 1). Always mention the Model Number when requesting service or repair parts for your Craftsman Engine.

All parts listed herein may be ordered from any SEARS, ROEBUCK AND CO. or SIMPSONS—SEARS LIMITED retail or catalog store. If the parts you need are not stocked locally, your order will be electronically transmitted to a Sears Repair Parts Distribution Center for expedited handling.

WHEN ORDERING REPAIR PARTS, ALWAYS GIVE THE FOLLOWING INFORMATION AS SHOWN IN THIS LIST.

1. The PART NUMBER
2. The PART DESCRIPTION
3. The MODEL NUMBER
4. The NAME OF ITEM—ENGINE

"Your Sears merchandise has added value when you consider that Sears has service units nationwide staffed with Sears trained technicians . . . professional technicians specifically trained on Sears products, having the parts, tools and equipment to insure that we meet our pledge to you. . . . we service what we sell."

Sold by SEARS, ROEBUCK AND CO., Chicago, IL. 60684 U.S.A.
and SIMPSONS - SEARS LIMITED, Toronto, Ontario, Canada.