

ROPER

GREAT AS ALL OUTDOORS LAWN AND GARDEN TRACTORS



With a Roper, the work goes faster and the fun comes sooner!

ROPER

ROPER GARDEN TRACTORS MAKE YARD CARE A PLEASURE... NOT A CHORE

Roper twin 16 gets you into the fun 4-seasons long

A Roper Twin 16 will handle big yard-care jobs with speed, safety, comfort and convenience. Rugged and responsive, the Twin 16 is ideal for big city lot or suburban spread—for residential or institutional use. Designed for use with a complete range of attachments, the Twin 16 offers year round versatility. Features include: quiet 16 HP Twin Briggs & Stratton four-cycle engine, 8 gauge steel frame, 8-speed all-gear Roper 6 + 2 Pac power train transmission, 12 volt electric key start, auto-type steering, spring-mounted adjustable seat, 3½ gallon rear fuel tank with gauge. Do it easier, better—with a Roper. Model T6328BR. 16 HP

ATTACHMENTS

FOR SPRING

Optional 30 or 38-inch six or eight HP tiller.

FOR SUMMER

Optional 42 or 48-inch rotary mower.

FOR FALL

Optional vac collector for 42-inch or 48-inch mower.

FOR WINTER

Optional 39-inch snow thrower.



Snow throwers available for all models shown



INTRODUCING ROPER'S BIG, BRAVNY, BEAUTIFUL BRUTE... THE HEAVY-DUTY TWIN CYLINDER 20-HP GARDEN TRACTOR

**Perfect for parks, plants,
large estates and farms.**

Designed for big-job performance and capacity, the Twin 20 HP will zip through a baker's dozen of grounds care chores. Available with a variety of Roper attachments, the Twin 20 will work your big-acreage jobs, year round. Features include: powerful electric key start, 6 forward, 2 reverse all-gear transaxle, clutch/brake combination, Onan twin long-life engine, turf saver tires. Reduces big-sized lots to postage stamps. Model T9329AR. 20 HP



another free manual from www.searstractormaterials.com



Snow throwers available for all models shown

ROPER

ROPER CLEARS THE PATH TO LEISURE FOR YOU AND YOURS



Engineered for full-time grounds maintenance of large lawns and country sized gardens. Powered with 18 HP opposed-piston, four-cycle, twin cylinder Onan engine. Eight speed 6 + 2 Pac all-gear transmission. Keyswitch electric start. Running time monitor. Rear-mounted 3.5 gallon fuel tank with gauge. Independent parking brake. Twin sealed beam headlights. Taillight. Roper makes you a winner at your leisure. Model T8328BR-Twin 18 HP



Snow throwers available for all models shown



CONQUER THE LONG GREEN SUMMER WITH A ROPER



This 18 HP Hydro Tractor features Hydrostatic Drive and a quiet twin-cylinder Onan engine. Heavy duty Hydrostatic transmission with reverse, lets you match the right speed for the right job. No shifting of gears. When the going gets tough, slow down ground speed by easing back on control—speed up by moving control forward. Key start ignition, oscillating front axle and 8 gauge chassis. Other features are: 2.5 gallon fuel tank with gauge, maintenance minder and large turf saver tires. Model T8338AR. 18 HP

another free manual from www.searstractormanuals.com

Snow throwers available for all models shown

ROPER

NO OTHER GARDEN TRACTOR DOES IT BETTER THAN A ROPER



Power mowing is fun, fast and easy with a Roper 11 HP Model T12283R (lower right). Ruggedly built with a four-cycle Briggs & Stratton Synchro-balanced engine. It has powerful guts to finish the chores. Features include Roper 6 + 2 Pac all-gear transmission with 6 speeds forward, 2 speeds in reverse.

Automotive-type ignition system, key start and dual-spring adjustable seat, independent parking brake and taillight are standard.

The Roper 14 HP Model T4328BR (upper left) makes mowing a fast, one-pass operation. Gives you a non-skip, smooth cut job . . . the satisfaction of a beautifully

mowed lawn. Easy to handle with great maneuverability. Solid state ignition system. 8-speed all-gear Roper 6 + 2 Pac power train transmission. Key start. Combination clutch/brake. Headlights. Taillight. Long-life Cast Iron Tecumseh engine with overhead valves.

Snow throwers available for all models shown



THE WORK GOES FASTER...FUN COMES SOONER WITH A ROPER

NEW: 11 HP LAWN TRACTOR



Powered by 11 HP Briggs & Stratton Syncro-balanced engine. Handles easily, maneuvers quickly. Standard equipment: PTO assembly, four speeds (3 forward and 1 reverse), key start, adjustable tie rods, automotive type steering, low tone muffler, full fenders, foot rests, 36" cut, and spring seat. Model L1219AR. 11 HP

Also available in 8 HP Model L8218AR.

REAR ENGINE RIDER MODEL K-832 (upper right)

Sit comfortable on this rear-engine Rider Mower with 8 HP engine and discover why yard care can be a pleasure with a Roper. Large 32-inch mower has 3 cutting height adjustments. Mower deck is

suspended from frame for even mowing quality. Three speeds forward and reverse with parking brake and safety interlocks.

another free manual from www.searstractormanuals.com

Snow throwers available for all models shown, except K-832.

ROPER

NEW! 20 HP ROPER GARDEN TRAC AND PERFORMANCE WITH THESE

HIGH BACK SEAT

Padded seat adjusts fore and aft.

FUEL TANK

3.5 gallon capacity rear mounted, easily accessible, with gauge.

LARGE TURF SAVER TIRES

Provide tender care for beautiful lawns.

BEAD & SEAL RIMS

Help prevent loss of air and roll off. Reduce incidents of flat tires.

HEAVY DUTY TRANSMISSION

6 speeds forward and 2 reverse give you the right speed for the right job.

NEW CLUTCH ENGAGEMENT AND DISENGAGEMENT LEVER

Simplicity, safety and ease of operation.

LOW TONE MUFFLER

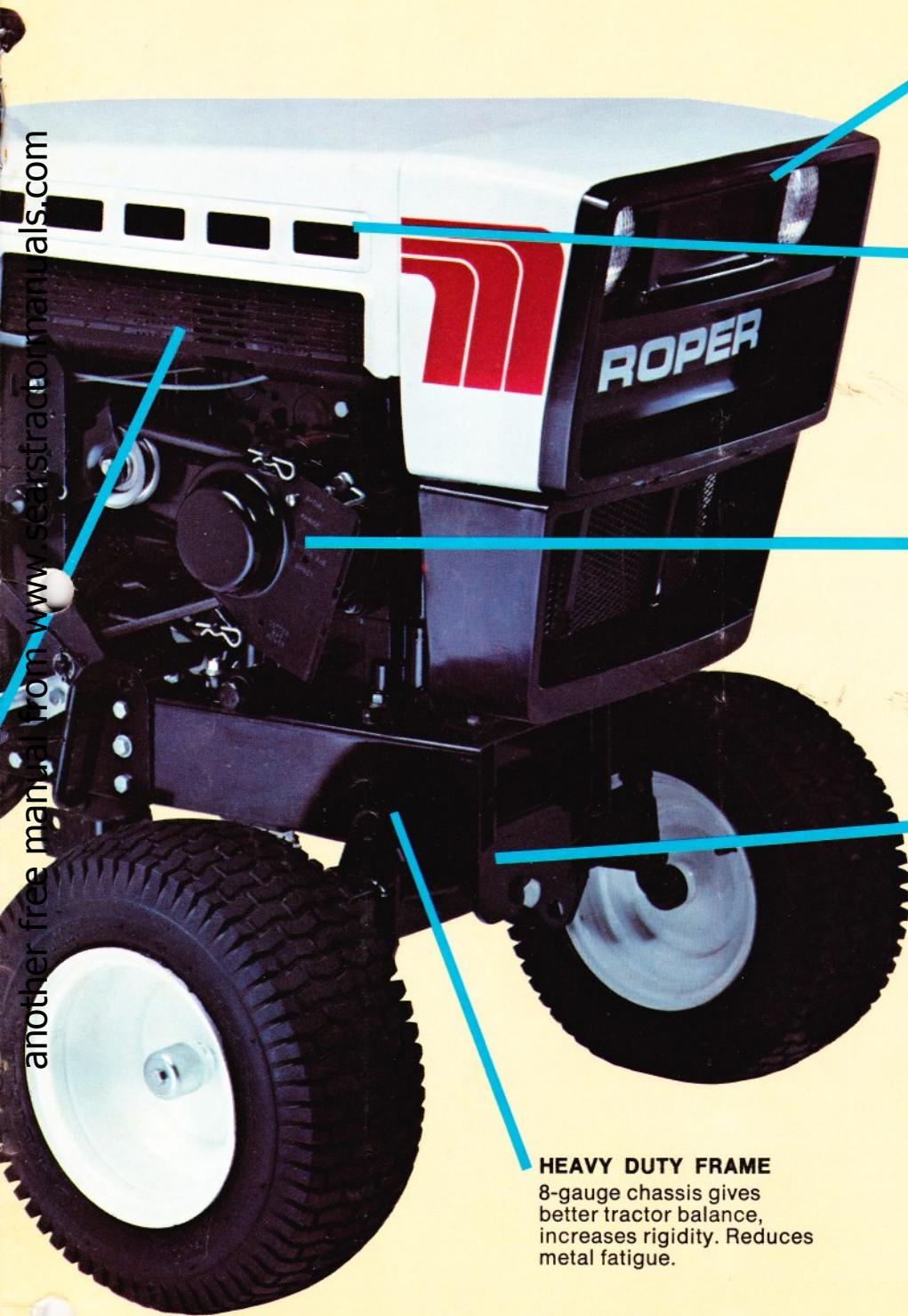


another free manual from www.searstractormanuals.com

TRACTOR BUILT FOR BIG JOB CAPACITY

TOP QUALITY FEATURES

another free manual from www.seatractormanuals.com



LIGHTS

Two sealed beam headlights and taillight.

DUAL AIR CLEANER

Standard air filter element is protected by donut-shaped foam pre-cleaner to protect engine.

RUGGED HD TWIN CYLINDER ONAN ENGINE

20 HP, 4-cycle, air-cooled, twin cylinders with cast iron liners, opposed pistons for maximum smoothness.

OSCILLATING FRONT AXLE

Wheels follow ground contours over rough ground, mud or snow, allowing mower and other attachments to float.

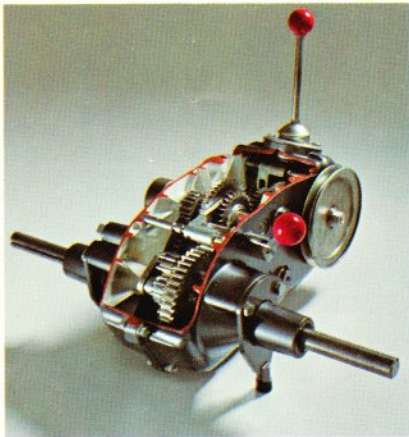
HEAVY DUTY FRAME

8-gauge chassis gives better tractor balance, increases rigidity. Reduces metal fatigue.

FEATURES NOT ILLUSTRATED

- maintenance minder for servicing
- key start automotive ignition
- clutch & brake combination
- adjustable tie rods

ROPER GIVES YOU BIG TRACTOR POWER BUILT BETTER, BUILT STRONGER TO LAST LONGER



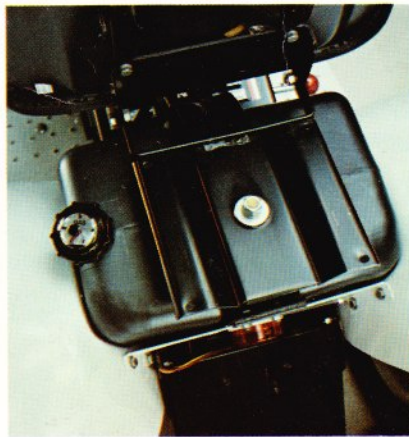
ROPER 6 + 2 PAC POWER TRAIN

Rugged Roper-built all-gear transmission provides 6 precise speeds forward from .85 to 6.56 mph, plus 2 reverse speeds of 1.02 and 2.53 mph.



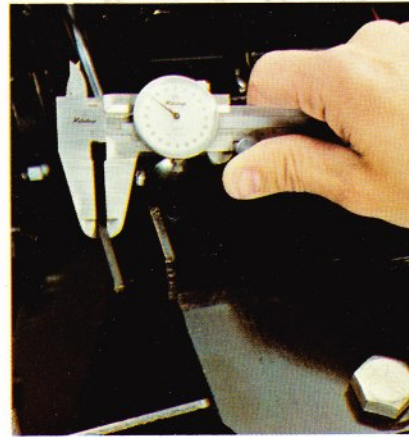
SPRING-MOUNTED SEAT

Contoured bucket seats are fully-cushioned and spring-mounted for comfortable riding. Seat is readily adjustable.



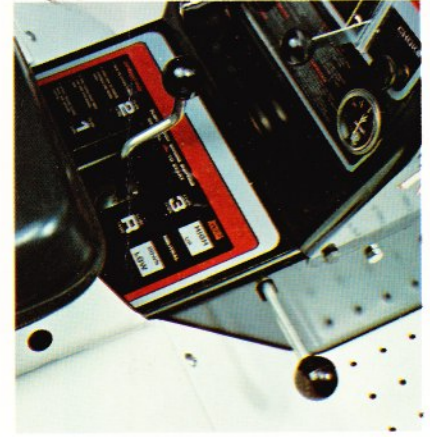
REAR MOUNTED FUEL TANK

(selected models) Affords easier, safer filling, eliminates spillage on hot engines. Seat tilts forward for quick access to tank. Fuel pump assures proper fuel-flow to engine.



**HEAVY DUTY ALL STEEL
LARGE FRAME**

8-gauge steel frame provides rigidity and dependable tractor balance.



EASY SPEED SELECTION

With Roper two speed ranges, you can match tractor power to mowing conditions. Gear down to drive the tractor slowly in tall grass. Gear up to run faster across an average lot. And still deliver full-power to the mowing attachment. Equally great performance and dependable power for tilling, grading and snow removal.

another free manual from www.searstractormanuals.com

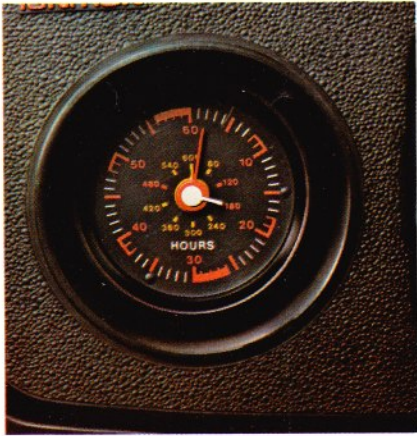


30-INCH INSIDE TURNING RADIUS

Lets you maneuver in and out of tight spots.

BEAD & SEAL RIM TUBELESS TIRES

Front and back. Prevents loss of air and roll-off. Practically eliminates flat tires.



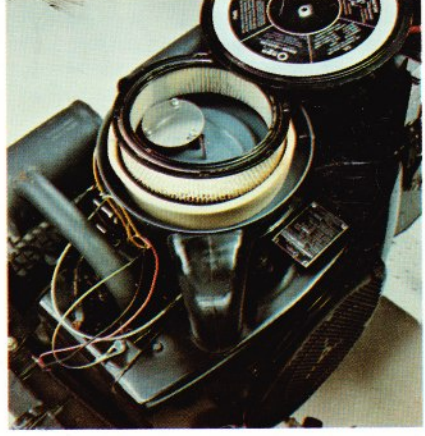
MAINTENANCE MINDER

Service Hour Meter on dash keeps accurate operation time. Tells you when to perform necessary servicing. Available on 18 and 20 HP tractors. See Owner's Manual.



ADJUSTABLE TIE RODS

Automotive type allows adjustments to maintain easy steering. Properly adjusted tie rods eliminate "wandering", helps return to straight ahead after turning.



DUAL AIR FILTER SYSTEM

Donut-shaped, pre-cleaner foam fits snugly over standard filter element to provide double protection. Increases engine efficiency.

ROPER OFFERS YOU A FULL RANGE OF ATTACHMENTS TO MATCH YOUR ROPER LAWN & GARDEN TRACTOR

**ROTARY MOWER**

42 and 48-inch. PTO-powered. Parallel suspension keeps mower even with ground surface at all cutting heights. Order 42-inch for 11 and 14 HP, TT718AR. For 16, 18 and 20 HP, order 42-inch TT728AR or 48-inch TT738AR.

PLOW

10-inch. All steel and adjustable to 6-inch depth. TT418R

DRAG HARROW

40-inch. Staggered tooth spacing for full soil contact. 40-inch working area, 4 positions for angling teeth for desired tilling depth. Use for leveling, pulverizing and to prepare extra fine seed bed. TT4331R

**CULTIVATOR**

Handles rows from 20 to 30 inches wide. Cultivates between rows spaced 36-inches or more. 5 tempered shanks and five 6-inch sweeps. Available with 2 weed hoes and 2 hilling tools. TT4631R

**MIDDLEBUSTER PLOW**

Used for furrowing, hilling and digging (such as potatoes). Adjustable below ground rudder stabilizes the foot for straight running. 10-inches wide. TT4431R

**DISC HARROW**

40-inch. Single gang of 12-inch high-carbon steel discs. Cut up trash, mulch or general pulverizing. TT428AR



SNOW THROWER

36, 39 and 40-inch. Powerful rotary snow throwers feature unique heavy duty auger with two discharge paddles. Throws snow forward, left or right. TT679AR . . . 40-inch fits 11 and 14 HP. TT648AR . . . 39-inch fits 16, 18 and 20 HP. LA049AR . . . 36-inch fits L821 and L121 lawn tractors. (Tire chains and wheel weights recommended.) Tire chains only for lawn tractors.



REAR GRADER BLADE

42-inch. Level soil, grade lanes, driveways. Tilt and angle of blade is adjustable. TT498AR



SELF-POWERED ROTO TILLERS

Powerful engine drives tiller at constant speed allowing 11-inch diameter tines to till up to 6-inch depth. Non-clogging tines, gauge wheels. 8 HP TT508AR . . . 38-inch cut. 6 HP TT518AR . . . 30-inch cut.



DOZER BLADE

46-inch. Free-floating spring trip blade can be angled left or right, raised or lowered from driver's seat. Requires front mounting bracket. Order TT758AR for 11 and 14 HP or TT764AR for 16, 18 and 20 HP tractors.



POWER VACUUM COLLECTOR

Collects clippings or fall leaves in large rear bag. Rear zipper permits easy removal of heavy-duty plastic bag for dumping. Fits all Roper Garden Tractors. TT6951R—LA0556R fits all lawn tractors.



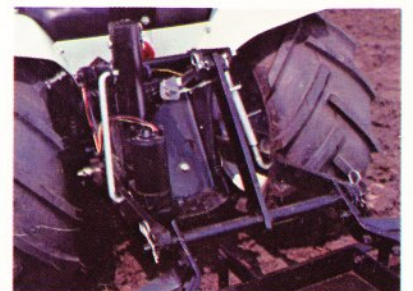
SNOW BLADE

42-inches wide. For all lawn tractors. Angles left and right from seat. Replaceable edge and adjustable skids. LA068R



MANUAL TRI-HITCH

Accepts attachments at proper angles for best work performance. Over-center lift lever permits easy raising and lowering of attachments from driver's seat. TA207AR



LECTRO-LIFT

Electric-powered lift does all the work for you. Handles heaviest rear mounted attachments easily. Operates with toggle-switch on dash. TA157AR

GARDEN TRACTOR ACCESSORIES

**AGRI-TERRAIN TIRES**

Chevron tires provide extra-traction in rough going, soft terrain . . . plowing, tilling, etc. Two rear tires and two rims. TA1441R—for 8.50 x 12. TA2151R—for 10.50 x 12.

**FRONT COUNTERWEIGHT**

50-pound weight helps stabilize front end for better control when plowing or power-tilling. Can be used on rear drawbar, in addition to wheel weights, when using rotary snow throwers and bulldozer blades. TA0331R fits front of 13, 16 and 18 HP tractors.

**HEAVY-DUTY REAR WHEEL WEIGHTS**

Each wheel weight weighs 35 pounds (including hardware) and is used where maximum traction is required for best performance. Recommended for all tilling, snow blowing and dozing jobs. Weights can be stacked on each wheel. Hardware included. TA0231R one pair.

**HEAVY-DUTY REAR TIRE CHAINS**

Cross links are closely spaced to give a smoother ride and increased traction. Recommended when using all snow removal attachments including dozer blades.

TA1031R—7.50 x 12 tires.

TA1131R—8.50 x 12 tires.

TA1231R—9.50 x 12 tires and 10.50 x 12 tires.

**GAUGE WHEEL KIT**

Used on uneven terrain—ditches, etc. to help prevent scalping.

TA178AR

**CHROME HUB CAP SET (4)**

Adds a touch of the sports car and luxury flair to any Roper garden tractor. Sparkling, highly reflective hub caps are chrome plated to keep their luster, easy to install and remove. TA018AR



THERE'S A "JUST RIGHT" ROPER TRACTOR MADE FOR YOU

WITH ATTACHMENTS TO MATCH!

GARDEN TRACTOR SPECIFICATIONS/FEATURES

| MODEL | T9329AR Twin 20 | T8328BR Twin 18 | T8338AR Twin 18 | T6328BR Twin 16 | T4328BR Straight-14 | T1228BR Straight-11 |
|--------------------------|---------------------|---------------------|---------------------|----------------------|------------------------|------------------------|
| Engine | Onan | Onan | Onan | Briggs & Stratton | Tecumseh | Briggs & Stratton |
| Horsepower | 20 | 18 | 18 | 16 | 14 | 11 |
| Displacement (cu. in.) | 52.2 | 48.0 | 48.0 | 40.0 | 23.70 | 24.36 |
| Ignition System | Automotive Type | Automotive Type | Automotive Type | High Tension Magneto | Solid State | Automotive Type |
| Cylinders | 2 Cast Iron Sleeves | 2 Cast Iron Sleeves | 2 Cast Iron Sleeves | 2 Plated | Cast Iron | Aluminum Alloy |
| Rear Fuel Tank (gallons) | 3½ | 3½ | 2½ | 3½ | Top 1¾ | Top 1¾ |
| Transmission | 8-speed | 8-speed | Hydro | 8-speed | 8-speed | 8-speed |
| H/D Battery (plates) | 66 | 66 | 66 | 66 | 54 | 42 |
| Front Tires | 16x6:50x8 | 16x6:50x8 | 16x6:50x8 | 16x6:50x8 | 16x6:50x8 | 16x6:50x8 |
| Rear Tires | 23x10:50x12 | 23x10:50x12 | 23x10:50x12 | 23x9:50x12 | 23x8:50x12 | 22.5x7:50x12 |

ATTACHMENT SELECTION FOR ROPER TRACTORS

| MODEL | 42" Rotary Mower TT718AR | 42" Rotary Mower TT728AR | 48" Rotary Mower TT738AR | 40" Sickle Bar TT2631R | 38" Power Sweeper TT3042R | 8" Plow TT4031R | 10" Plow TT418R | 40" Disc Harrow TT428AR | 40" Drag Harrow TT4331R | Middlebuster Plow TT4431R | Cultivator TT4631R | 42" Rear-grader Blade TT498AR | 38" 8 HP Tiller TT508AR | 30" 6 HP Tiller TT518AR | 46" Dozer Blade TT748AR | 40" Snow Thrower TT679AR | 39" Snow Thrower TT648AR | Vacuum Collector TT6951R | Manual 3-point Tri-Hitch TA207AR | Lectro-Lift TA157AR |
|---------|-----------------------------|-----------------------------|-----------------------------|---------------------------|------------------------------|--------------------|--------------------|----------------------------|----------------------------|------------------------------|-----------------------|----------------------------------|----------------------------|----------------------------|----------------------------|-----------------------------|-----------------------------|-----------------------------|-------------------------------------|------------------------|
| T8328BR | • | • | • | • | • | • | • | • | • | • | • | • | • | • | • | • | • | • | • | • |
| T8338AR | • | • | • | • | • | • | • | • | • | • | • | • | • | • | • | • | • | • | • | • |
| T6328BR | • | • | • | • | • | • | • | • | • | • | • | • | • | • | • | • | • | • | • | • |
| T4328BR | • | • | • | • | • | • | • | • | • | • | • | • | • | • | • | • | • | • | • | • |
| T1228BR | • | • | • | • | • | • | • | • | • | • | • | • | • | • | • | • | • | • | • | • |
| T9329AR | • | • | • | • | • | • | • | • | • | • | • | • | • | • | • | • | • | • | • | • |

For maximum traction and performance, tractor wheel weights are recommended with tillage and snow removal equipment.

YOUR ROPER DEALER INVITES YOU TO LOOK OVER THE ROPER LINE

POSSIBLY WOLF PAPER SON ROME
another free manual from www.searstractormanuals.com



Roper's policy of continuous product improvement requires that specifications are subject to change without notice.

ROPER OUTDOOR POWER PRODUCTS

Form No. GTC-80

Kankakee, Illinois 60901/Phone (815) 937-6000

Printed in U.S.A.