

ASSEMBLY, OPERATING INSTRUCTIONS
AND PARTS LIST FOR
SEARS LOADER

MODEL NUMBER 100-26210

The Model Number will be found on a plate attached to the right side of the main frame. Always mention the Model Number in all correspondence regarding the SEARS LOADER or when ordering repair parts.

HOW TO ORDER REPAIR PARTS

All parts listed herein may be ordered through SEARS, ROEBUCK AND CO. or SIMPSONS-SEARS LIMITED. When ordering parts by mail selling prices will be furnished on request or parts will be shipped at prevailing prices and you will be billed accordingly.

WHEN ORDERING REPAIR PARTS, ALWAYS GIVE THE FOLLOWING INFORMATION AS SHOWN IN THIS LIST:

1. THE PART NUMBER
2. THE PART NAME
3. THE MODEL NUMBER 100-26210
4. THE NAME OF ITEM - LOADER

**COAST TO COAST NATION-WIDE
SERVICE FROM SEARS
FOR YOUR SEARS LOADER**



SEARS, ROEBUCK AND CO. and SIMPSONS-SEARS LIMITED in Canada back up your investment with quick, expert mechanical service and genuine CRAFTSMAN replacement parts.

If and when you need repairs or service, call on us to protect your investment in this fine piece of equipment.

**SEARS, ROEBUCK AND CO.—U.S.A.
IN CANADA, SIMPSON-SEARS LIMITED**

SEARS LOADER—MODEL NUMBER 100-26210

another free manual from www.searstractormanuals.com

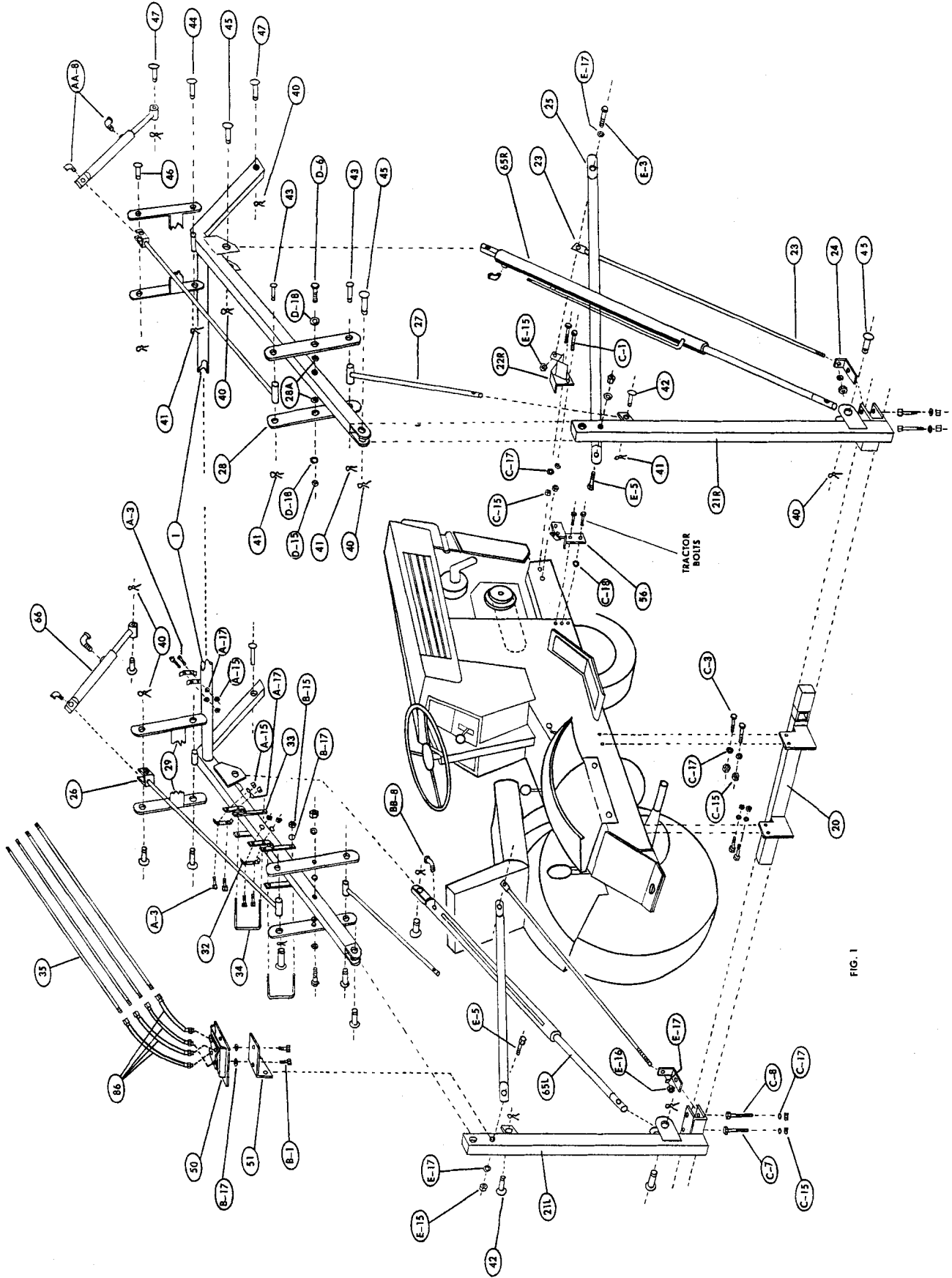


FIG. 1

SEARS LOADER—MODEL NUMBER 100-26210

WHEN ORDERING REPAIR PARTS, ALWAYS GIVE THE FOLLOWING INFORMATION AS SHOWN IN THIS LIST.

1. The PART NUMBER.
2. The PART NAME.
3. The MODEL NUMBER 100-26210
4. The NAME of item—Loader.

ALWAYS ORDER BY PART NUMBER

PARTS LIST

Part No.	Description
1L	Main Frame
21R	R.H. Upright
21L	L.H. Upright
20	Cross-member
23	Truss rod 28"
24	Truss rod bracket
22L	L.H. Front mounting bracket
22R	R.H. Front mounting bracket
25	Brace arm
26	Level arm
27	Level arm
28	Level plate
29	Level plate
32	Bracket back plate
33	Feedline bracket
34	U-clamp
35	Feedline 31"
36	Feedline 23 1/2"
37	Feedline 20"
50	Hydraulic valve
51	Valve plate
55	Hydraulic pump
56	Pump mounting bracket
57	Pump bracket
60	Oil reservoir
65R	R.H. Lift cylinder
65L	L.H. Lift cylinder
66	Bucket cylinder
68P	Pulley
69	"V"-belt
80	Oil intake hose 45"
85	Hose clamp 5216
86	Hose, 1/4"M x 3/8"SF x 16-1/2"
87	Hose, 1/4"SM x 3/8"M x 15"
88	Hose, 3/8"M x 3/8"SF x 15"
89	Hose, 3/8"M x 3/8"SM x 15"
93	Hose, 3/8"M x 3/8"SM x 36"
94	Hose, 3/8"M x 3/8"SM x 42"

Part No.	Description
40	Hitch pin clip No. 11
41	Hitch pin clip No. 3
42	Steel pin 1/2" x 2"
43	Steel pin 5/8" x 2-1/2"
44	Steel pin 5/8" x 2-3/4"
45	Steel pin 3/4" x 2-1/2"
46	Steel pin 3/4" x 2-3/4"
47	Steel pin 3/4" x 3"
105	Weight box straps 7"
A1	*Bolt 1/4" x 3/4"
A15	*Hex nut 1/4"
A17	*Lock washer 1/4"
B1	*Bolt 5/16" x 3/4"
B15	*Hex nut 5/16"
B17	*Lock washer 5/16"
C1	*Bolt 3/8" x 1"
C7	*Bolt 3/8" x 1-1/2"
C15	*Hex nut 3/8"
C17	*Lock washer 3/8"
C18	*Flat washer 3/8"
D1	*Bolt 7/16" x 1"
D5	*Bolt 7/16" x 3"
D15	*Hex nut 7/16"
D17	*Lock washer 7/16"
E2	*Bolt 1/2" x 1-1/4"
E5	*Bolt 1/2" x 2-1/2"
E15	*Hex nut 1/2"
E17	*Lock washer 1/2"
AA1	*Nipple 1/4" x C
AA8	*St elbow 1/4 x 90°
BB3	*T'S 3/8"
BB6	*Reducing coupling 3/8" x 1/4"
BB8	*St. elbow 3/8" x 90°
BB14	*Elbow 3/8" x 90°
CC1	*Nipple 1/2" x C
CC17	*Reducing bushing 1/2" to 3/8"
CC22	*Pipe end 1/2" x 1-1/2"
CC25	*Pipe plug 1/2"

*Standard Hardware Items — May be purchased locally

MOUNTING INSTRUCTIONS FOR SEARS LOADER—MODEL NUMBER 100—26210

STEP 1

Position front mounting bracket (22R) with the front of the bracket flush with the front of the side frame on the right hand side of the tractor. Using the bracket (22R) as a template, mark the two (2) mounting holes on the side frame and drill with a 3/8" x 1" drill. Fasten bracket (22R) to tractor frame with 3/8" x 1" bolts, locks and nuts. Follow the same procedure when attaching left hand front mounting bracket (22L).

STEP 2

Remove mower mounting bracket from the tractor and attach the cross-member (20) to the tractor frame using the same bolts that were used to hold the mower mounting bracket to the tractor. See fig. No. 1.

STEP 3

Install pre-assembled pump unit to the right side of tractor using 3/8" flat washer as spacer in the bottom hole of the pump bracket (56) as in fig. No. 1 & 2. Align pulley and install belt. Tighten the belt sufficiently to pull pump under load.

STEP 4

Attach 45" oil intake hose (80) to the oil reservoir (60) and fasten the oil reservoir (60) to the draw-bar of the tractor as shown in fig. No. 2. Take the intake hose (80) through the hole in right hand side of cross-member (20) as in fig. No. 2 and fasten it to the pump (55) as in fig. No. 2.

STEP 5

Install uprights (21R & 21L) to cross-member (20) as in fig. No. 1. Both should be centered and approximately 29" apart. Using 3/8" x 3-1/2" bolts, locks and nuts in the outside hole and 3/8" x 4" bolts, locks and nuts in the inside hole of the uprights (21R & 21L) and at the same time attach the truss rod brackets (24) to the uprights (21R & 21L) as in fig. No. 3.

STEP 6

To allow for clearance for the lift cylinder (65L), clutch and brake control rod must be bent to form a 90° angle. Straighten the control rod and shorten it enough to clear the generator belt guard, as in fig. No. 5.

STEP 7

Remove the bolt that is used to hold valve plate (51) during shipping and attach main frame assembly and cylinders (65L & 65R) to the uprights (21R & 21L) using 3/4" x 2-1/2" steel pins (45). Position valve between brace arm (25) and upright (21L) using rear hole in valve plate (51) and 1/2" x 2-1/2" bolts, locks and nuts as in fig. No. 3. Attach level arms (27) to uprights using 1/2" x 2" steel pins (42) as in fig. No. 1. Fasten right brace arm (25) to upright (21R) and install truss rods (23) in truss rod brackets (24) as in fig. No. 1. Attach truss rods (23) and brace arms (25) to the front mounting brackets (22R & 22L). Connect the 42" hydraulic hose (94) from the outlet port in the pump (55) to the inlet port of the valve (50) and the 36" hydraulic hose (93) from the outlet port on the valve (50) to the return port of the reservoir (60).

STEP 8

Fill the oil reservoir (60) with 4 quarts type "A" transmission fluid. Start the engine and raise the loader up and down several times to fill the cylinders and feed lines with fluid. Stop the engine and add 3 more quarts of transmission fluid.

STEP 9

Install attachments.

NOTE: FOR BEST RESULTS IN SEALING USE PIPE AND JOINT COMPOUND.

NOTE: FOR BEST RESULTS IN TRACTION, STABILITY AND PERFORMANCE WE STRONGLY RECOMMEND FLUID IN THE TIRES AND 60 LB. WHEEL WEIGHTS ON EACH WHEEL.

KWIK-WAY

K-W MANUFACTURING CO., INC.
800 SOUTH MARION ROAD
SIOUX FALLS, SOUTH DAKOTA 57106-0292

We would like to take a moment of your time to thank you for your interest in **KWIK-WAY** Products.

K-W Manufacturing Co., Inc. has been building quality Front End Loaders and Backhoes for Lawn and Garden Tractors since 1960.

We are very proud of these units. They are designed to provide years of service to the owners of small acreages and landscape developers.

Following is a list of the models that our Loaders and Backhoes will fit.

AGCO ALLIS	ARIENS
CUB CADET	GRAVELY
INGERSOLL	JOHN DEERE
MASSEY FERGUSON	NEW HOLLAND
SIMPLICITY	TORO
WHITE	YARDMAN

AND NOW KUBOTA!

We are pleased to help you anyway we can. We offer literature and free videos on all our products. Call us at 1-800-843-3720, or visit our web page at kwmanufacturing.com.

Thank you for your interest in **KWIK-WAY** products.