

Sears

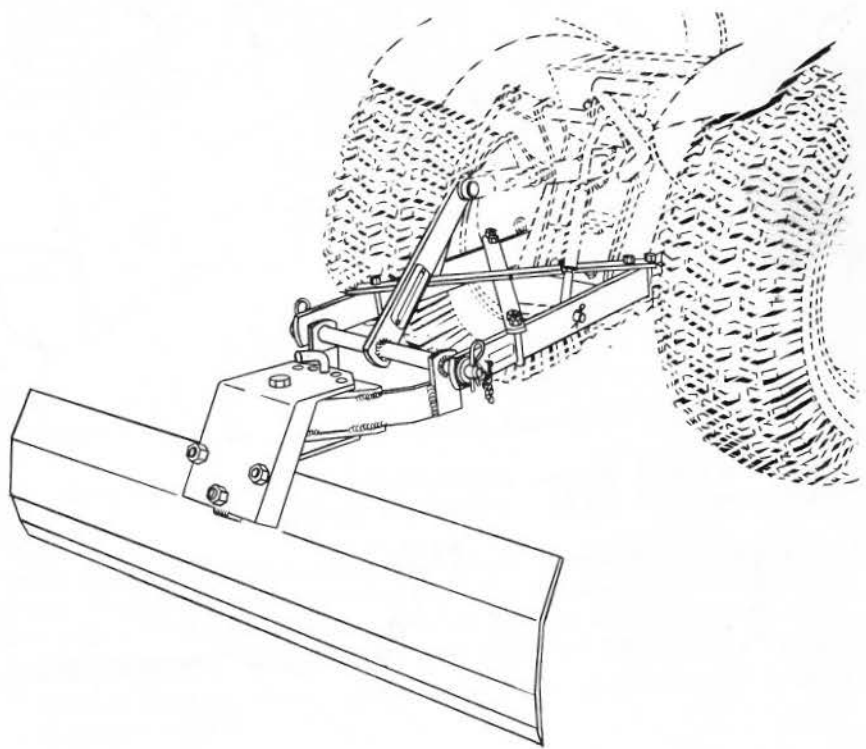
owners manual

# LEVELER BLADE

MODEL NO.  
917.251330

**CAUTION:**  
Read Instructions  
Carefully

- Assembly
- Operating
- Maintenance
- Repair Parts



SEARS, ROEBUCK AND CO. U.S.A.

SIMPSONS-SEARS LIMITED, CANADA

# assembly

A letter in parentheses in the following instructions refers to an arrow in an adjoining Figure (illustration), unless otherwise stated. When R.H. (Right Hand) or L.H. (Left Hand) are used it should be understood to mean from a position behind and facing the Leveler Blade or Direction of travel

For heavy work 1 or 2 rear wheel weights mounted on each rear wheel, will greatly increase traction and performance of tractor and blade.

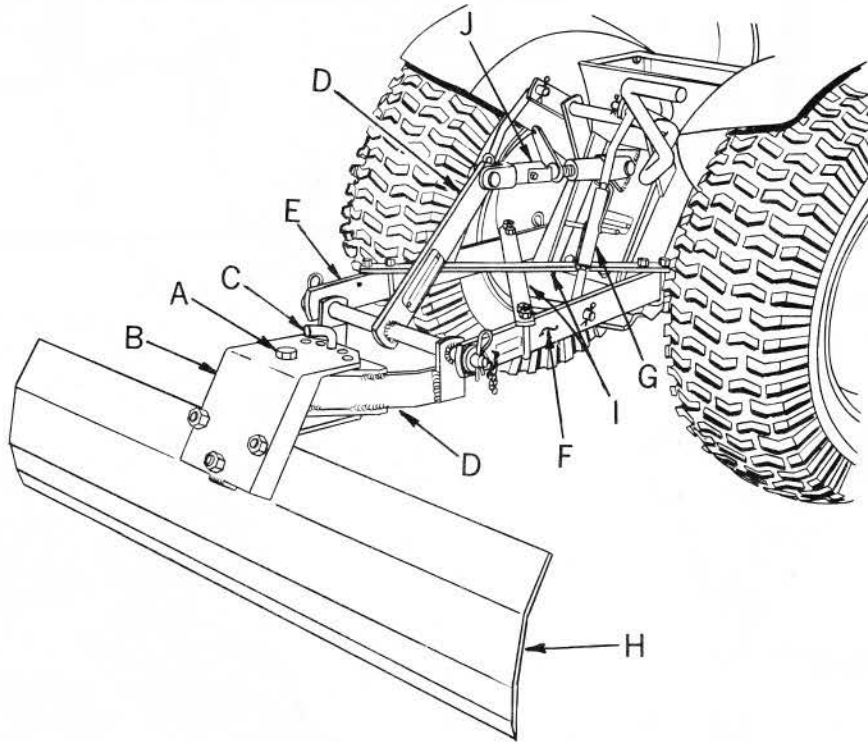


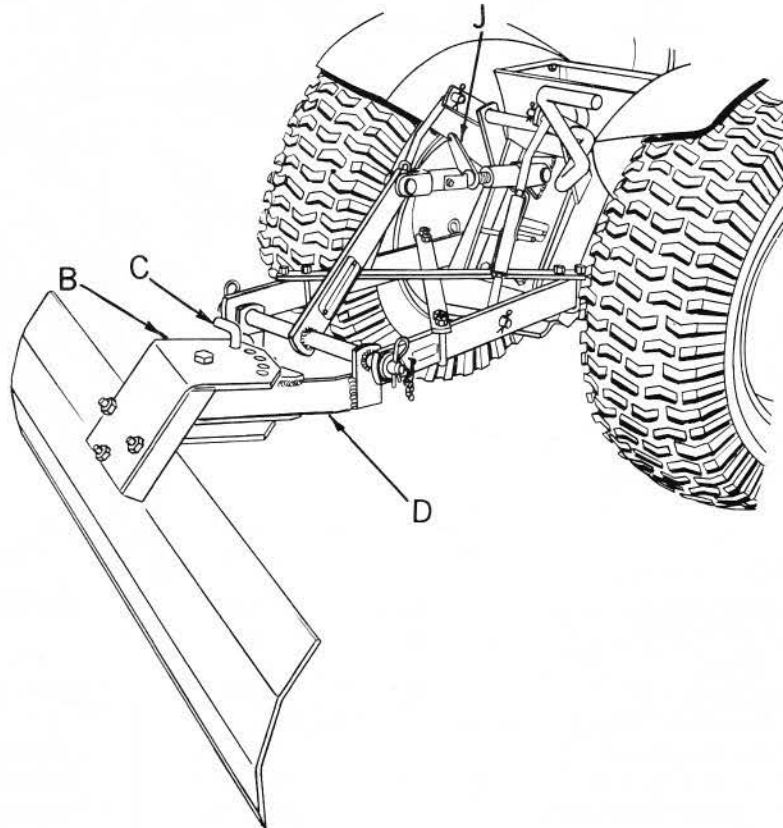
FIG. 1

1. Cut all wires, and remove parts from carton.
2. Refer to Fig. 1. Remove nut and bolt (A), from quadrant plate upper and lower (B). Also remove cotter pin from end of quadrant pin (C), and remove quadrant pin.
3. Position frame weldment (D), between upper and lower quadrant plate (B). Note correct position of frame weldment (D). Secure with bolt and nut (A), tighten nut until snug, but do not tighten too tight to prevent blade from swiveling. Insert quadrant pin (C) into center hole of quadrant plate (B), and into hole of frame weldment (D). This will prevent blade from swiveling when attaching to three point hitch.

# assembly

## ATTACHING BLADE TO TRACTOR

4. Slip L.H. lower hitch bar (E) of hitch over L.H. hitch bar of leveler blade, and secure with spring retainer. See Fig. 1.
5. Slip R.H. lower hitchbar (F) of hitch over R.H. hitch bar of leveler blade, and secure with spring retainer. Note: R.H. lower hitch bar is adjustable. Rotate turnbuckle (G) so that R.H. lower hitch bar will slide over R.H. hitch bar of leveler blade easily, and blade (H) is level side to side.
6. Assemble top link of three point hitch (J) to upper hitch bar of frame weldment (D) as shown in Fig. 1, and secure with pin and spring retainer.
7. Position the two hitch braces (I) over L.H. and R.H. lower hitch bars as shown in Fig. 1. Secure with four U-bolts, lockwashers, and hex nuts shipped in bag of parts.



## operation

FIG. 2

Refer to Fig. 2. The Leveler Blade can be angled in five different positions. Remove cotterpin in bottom of quadrant pin (C) and remove quadrant pin. Move blade to desired position lining up holes on quadrant plates (B), and hole in frame weldment (D). Insert quadrant pin (C), and secure with cotter pin.

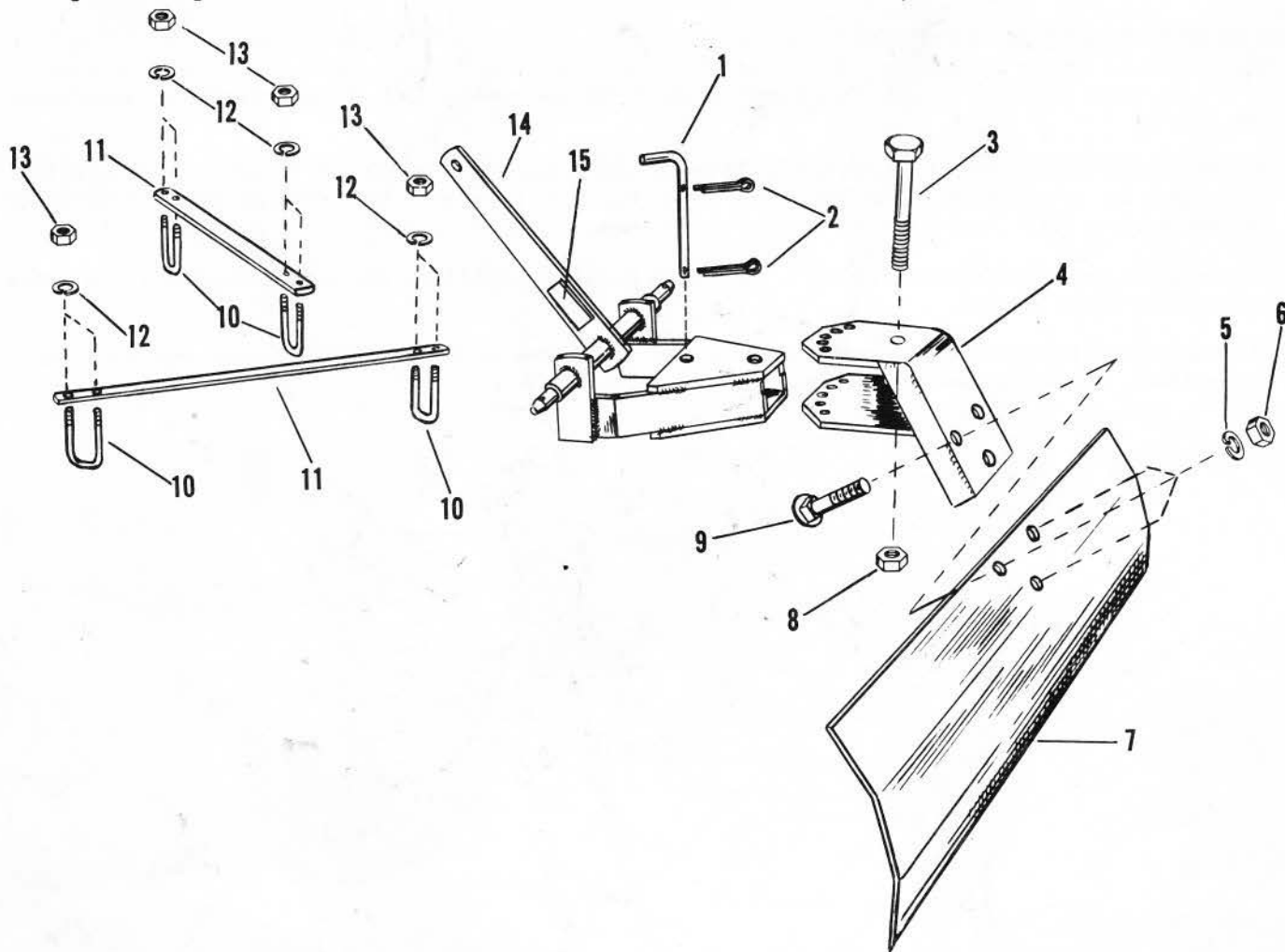
When working in heavy material it may be desirable to tilt blade so that a smaller bite will be taken. To accomplish this, turn top link turnbuckle (J), to the left (counterclockwise). When grading in loose, light material a greater amount of work can be done with the blade in a more upright position. In this case, turn top link turnbuckle (J), to the right (clockwise).

## maintenance

Oil quadrant upper and lower (B, Fig. 2), to aid in swiveling. During the operating season, check all bolts and nuts and keep them tight. When Blade is not being used, the blade should be coated with grease or rust preventative. This Leveler Blade's life expectancy is practically indefinite if handled properly and kept oiled and housed when not in use.

Sears, Roebuck and co. or Simpsons-Sears limited in Canada reserves the right to make any changes in design or improvements without imposing any obligation to install the same on its implements heretofore manufactured.

# repair parts



KEY NO.	PART NO.	DESCRIPTION	KEY NO.	PART NO.	DESCRIPTION
1	5418H	Quadrant Pin	9	27P	*Bolt, Sq. Neck Carriage 1/2-13 UNC x 2 1/2
2	2506P	*Cotter Pin 1/8 x 1	10	5417H	U-Bolt
3	3167P	*Bolt, Hex Finished 5/8- 11 UNC x 4	11	5421H	Hitch Brace
4	606A300	Quadrant Plate Upper and Lower	12	1004P	*Washer, Lock 3/8
5	1000P	*Washer, Lock 1/2	13	501P	*Nut, Hex ASF 3/8-16 UNC
6	502P	*Nut, Hex 1/2- 13 UNC	14	634A55	Frame Weldment
7	5426H	Blade	15	-----	Model Number Plate
8	4764H	Lock Nut	---	1734R	Owners Manual
					*Standard Hardware Item -- may be purchased locally

**MODEL NO. 917.251330**

The Model Number will be found on a plate attached to the Frame Weldment. Always mention the Model Number when requesting service or repair parts for your LEVELER BLADE.

SEARS SERVICE IS AT YOUR SERVICE WHEREVER YOU LIVE OR MOVE IN THE U.S.A. Your Sears merchandise takes on added value when you discover that Sears has over 2,000 Service Units throughout the country. Each is staffed by Sears-trained, professional technicians using Sears approved parts and methods.

**HOW TO ORDER REPAIR PARTS**

All parts listed herein may be ordered through SEARS, ROEBUCK AND CO. or SIMPSONS-SEARS LIMITED. When ordering parts by mail, selling prices will be furnished on request or parts will be shipped at prevailing prices and you will be billed accordingly.

WHEN ORDERING REPAIR PARTS, ALWAYS GIVE THE FOLLOWING INFORMATION AS SHOWN IN THIS LIST.

1. The PART NUMBER
2. The MODEL NUMBER 917.251330
3. The PART DESCRIPTION
4. The NAME OF ITEM-- Leveler Blade