

Sears

**MODEL NO.
917.252210**

OWNER'S MANUAL

**Assembly
Operation**

**Maintenance
Repair Parts**

CULTIVATOR TOOL BAR

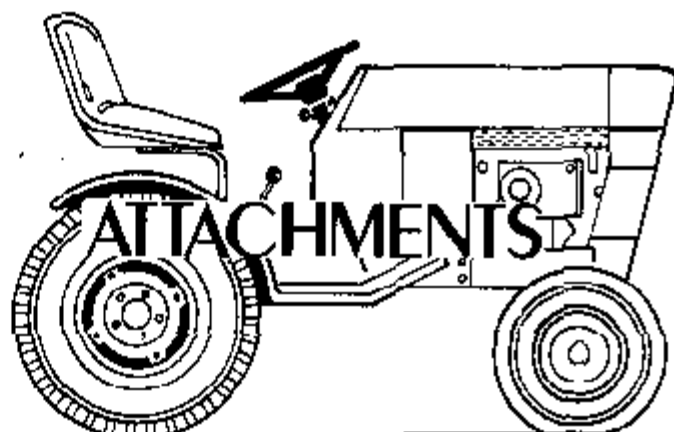


TABLE OF CONTENTS

ASSEMBLY INSTRUCTIONS 1
OPERATION INSTRUCTIONS 4

MAINTENANCE INSTRUCTIONS 4
REPAIR PARTS 5

RULES FOR SAFE OPERATION

Refer to your Tractor and 3-Point Hitch owners manual for "Rules For Safe Operation".

Use caution – Sweeps or Shovels (or other ground working tools) are sharp.

Lift Cultivator out of the ground and reduce speed before backing up.

Drive slowly when Cultivator is in transport position.

 **LOOK FOR THIS SYMBOL TO POINT OUT IMPORTANT SAFETY PRECAUTIONS. IT MEANS-ATTENTION! BECOME ALERT! YOUR SAFETY IS INVOLVED.**

CONGRATULATIONS on your purchase of a Sears Cultivator Pool Bar. Use it for straddle-row, between-row or general field cultivation.

A set of 5 Sweeps, 5 Double Point Shovels or Weeding Hoes and Hillers are available as optional equipment from your nearest Sears store.

Please read and retain this manual. The instructions will enable you to assemble, operate and maintain your equipment properly. Always observe the "RULES FOR SAFE OPERATION".

INTRODUCTION

GENERAL FIELD CULTIVATION BEFORE PLANTING

Only early, frequent and persistent cultivation will kill most weeds. For destroying most of these weeds, we suggest the Cultivator setting as shown in Fig. 3. In regions of low average rainfall it not only kills weeds quickly, but leaves a roughened surface that holds snow, absorbs moisture, and effectively retards evaporation. Under most conditions, even though the surface soil may be quite dry and pulverized, the sweeps or shovels dig deep enough to bring clods of dirt to the surface. The valuable loose top soil sifts down below the clods where there is much less possibility of its being carried away by wind or water. This means of cultivation will do a job similar to a spring harrow and is very effective in preparing seedbeds. The

lifting action of the sweeps or shovels is particularly beneficial in a late, cold spring, breaking clods and stirring the soil after discing, so that air can circulate throughout the seedbed. Follow steps 1 thru 20, page 1 and 2 for general field cultivation setting up instructions.

BETWEEN ROW CULTIVATING

Between row setting will clean out the weeds in the center of the rows. This is the same setting as general field cultivation. It will handle rows 36 inches or wider. Follow steps 1 thru 20, pages 1 and 2.

STRADDLE ROW CULTIVATION

The Straddle row setting (Fig. 4) will clean out the weeds next to the plants. It will handle rows from 20 to 36 inches apart. It is possible you will want to cultivate twice with this setting before between row cultivating. Follow steps 1 thru 20, pages 1 and 2 with one exception. Refer to step 12, do not assemble the center Offset Shank Assembly.

To assemble and initially service your Cultivator you will need:

- | | |
|---|------------------|
| (1) 3/4" Wrench | (1) 9/16" Wrench |
| (2) 11/16" Wrenches | (1) 1/2" Wrench |
| (1) Cartridge of Grease
(Amdex No. 1 E.P. Grease
or equivalent) Sears
Part No. 2557R - See Page 5. | (1) Grease Gun |

NOTE: Right Hand (R.H.) and Left Hand (L.H.) are determined from operators position on tractor seat.

Remove all parts from carton. Open bags of parts.



USE CAUTION – SWEEPS OR SHOVELS ARE SHARP.

www.searstractormanuals.com
from Sears Cultivator manual
@not free manual

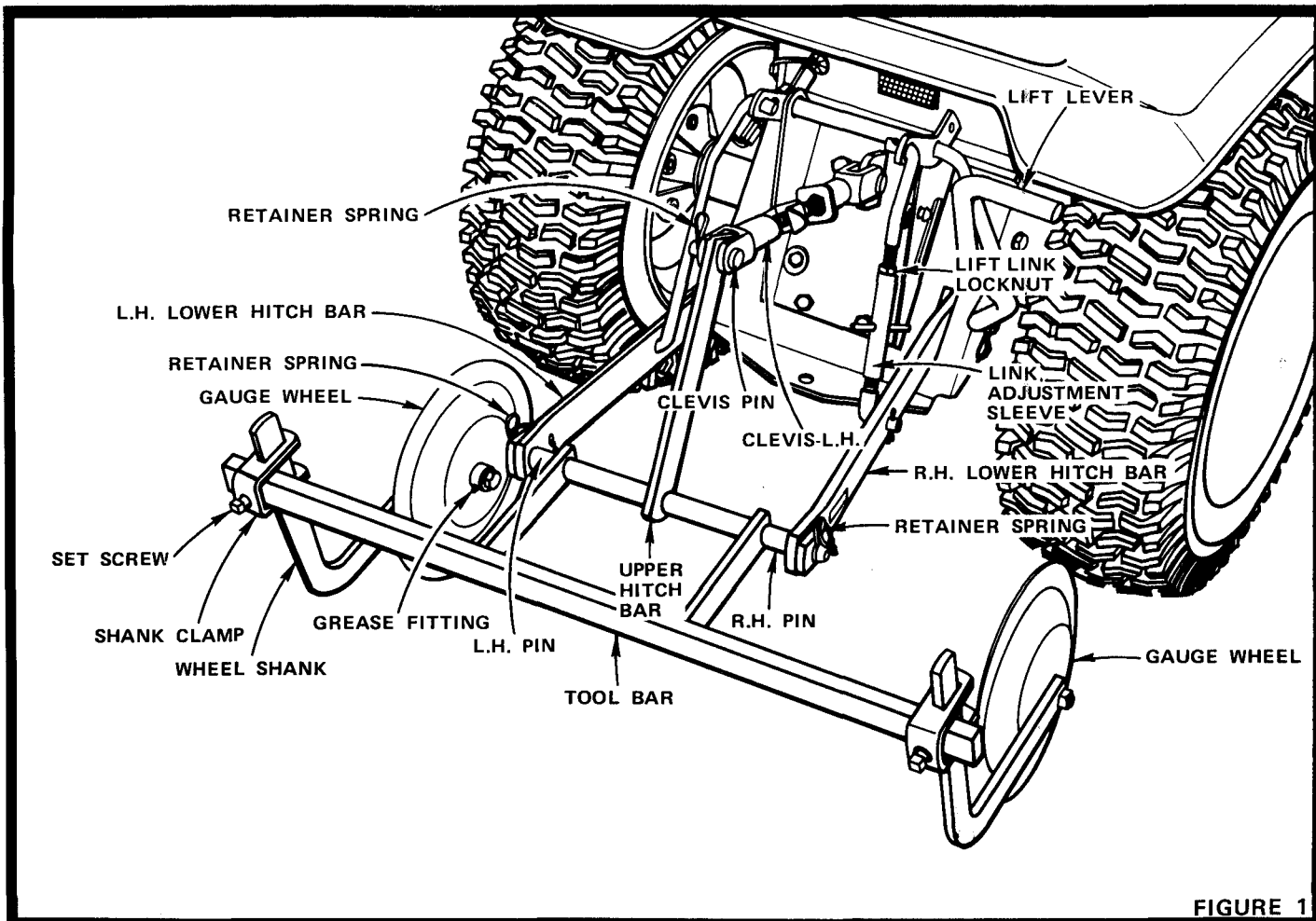


FIGURE 1

ASSEMBLY

1. Assemble 3-Point Hitch to Tractor. Refer to hitch manual.
2. Check tire pressure for proper inflation. Refer to tractor manual.

It is important that assembly be done on level ground. An ideal situation would be a level cement driveway, cement platform, etc.

3. Slip L.H. Lower Hitch Bar over L.H. pin of Cultivator Frame (Tool Bar). Secure with Retainer Spring (Fig. 1).
4. Slip R.H. Lower Hitch Bar over R.H. Pin of Cultivator Tool Bar. Secure with Retainer Spring.
NOTE: R.H. Lower Hitch Bar is adjustable. Loosen Nut and rotate Link Adjustment Sleeve for easy placement of Hitch Bar over Pin of Tool Bar.
5. Assemble Clevis-L.H. to Upper Hitch Bar. Secure with Clevis Pin and Retainer Spring.
6. Raise Tool Bar.

7. Position a Shank Clamp over L.H. end of Tool Bar as shown. Slide Wheel Shank with Gauge Wheel attached, through slot in Shank Clamp.
NOTE: Gauge Wheel must be to inside of Wheel Shank. Wheel Shank should extend 1 - 1/2 to 2 inches above Shank Clamp. Also, Shank Clamp should be approximately 1 inch from end of Tool Bar. Tighten Set Screw in Shank Clamp securely. Shank Clamp with Set Screw in place was shipped in bag of parts.

8. Assemble the other Shank and Gauge Wheel to R.H. end of Tool Bar in same manner as L.H. step 7.

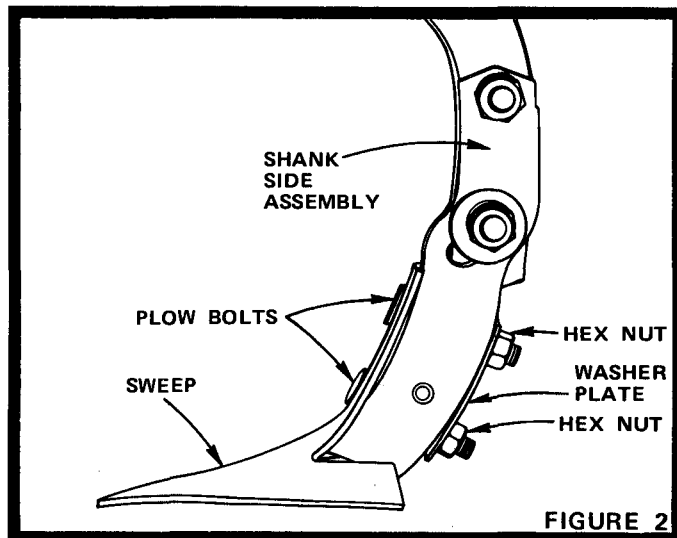


FIGURE 2

9. Grease Gauge Wheels thru a Grease Fitting on each Wheel. Use Amdex No. 1 E.P. Grease or equivalent. Grease each Fitting until grease appears around Wheel Hub.
10. Assemble Sweeps or Shovels to Shank Side Assemblies of Offset and Straight Shanks with Plow Bolts, Washer Plates and Hex Nuts shipped in bag of parts. Tighten Nuts securely (Fig. 2).

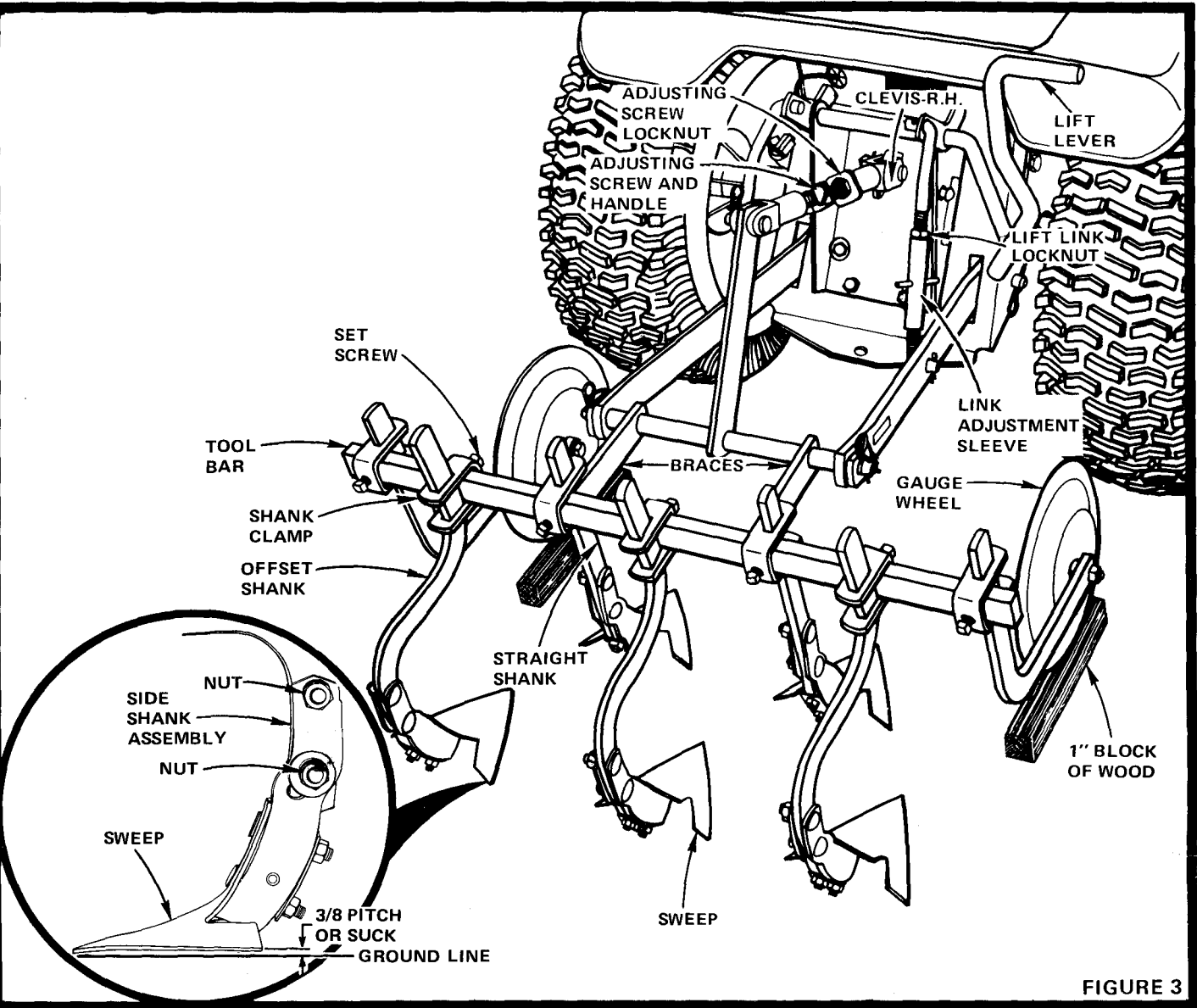


FIGURE 3

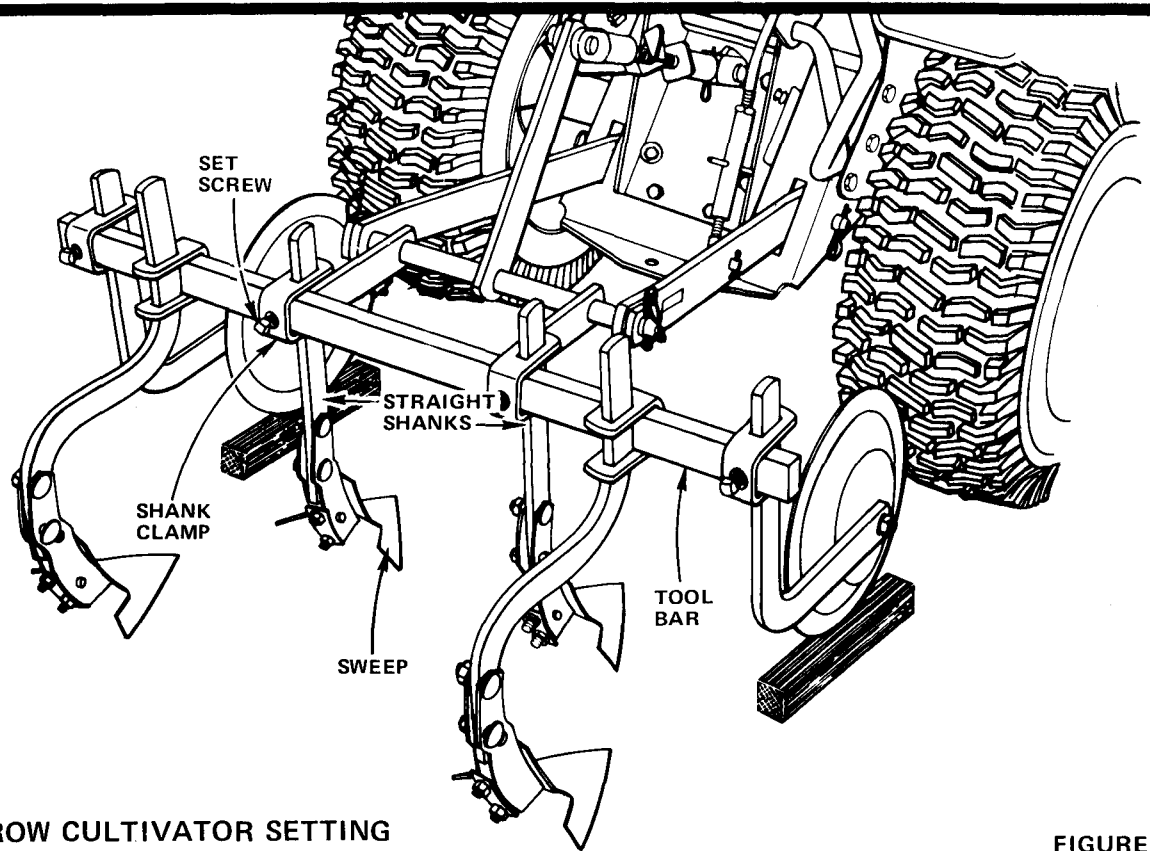
GENERAL FIELD AND BETWEEN ROW CULTIVATOR SETTING

12. Lower Tool Bar. Place a 1 inch Block of Wood under each Gauge Wheel (Fig. 3).
13. Assemble the three Offset Shanks with Sweeps or Shovels attached to Tool Bar, as desired with Shank Clamps. Tighten Set Screws securely. Shank Clamps with Set Screws attached were shipped in bag of parts.
14. Position the two Straight Shanks with Sweeps or Shovels attached to Tool Bar as desired with Shank Clamps. Tighten Set Screws securely. Shank Clamps with Set Screws attached were shipped in bag of parts.
15. Loosen Lift Link Locknut.
16. Turn Link Adjustment Sleeve (counterclockwise to lengthen linkage) until the points of the Sweeps or Shovels touch level surface at the same time.
NOTE: It may also be necessary to loosen Set Screw in Clamp and move Shank up or down so that all Sweep or Shovel points touch level surface at the same time.
17. After adjusting, tighten Locknut against Link Adjustment Sleeve.

18. Loosen Adjusting Screw Locknut.
19. Turn Handle of Adjusting Screw and Handle (clockwise to shorten linkage) until Tool Bar Braces are parallel with ground.
20. After adjusting, tighten Adjusting Screw Locknut against Clevis-R.H.
21. All Sweeps or Shovels must have a 3/8 Pitch or Suck and all points must touch level surface at the same time (Fig. 3 INSET).
 - a. Loosen the two Nuts in each Shank Side Assembly and move Sweep or Shovel forward or backward to obtain the proper 3/8 Inch Pitch or Suck.
 - b. Retighten Nuts securely.



ALWAYS LIFT CULTIVATOR OUT OF THE GROUND BEFORE STARTING TURNS OR BACKING UP.



STRADDLE ROW CULTIVATOR SETTING

FIGURE 4

STRADDLE ROW CULTIVATOR SETTING

The Straddle Row setting as shown in Fig. 4 is obtained by removing the complete center offset Shank assembly.

The exact position of the Shank Assemblies will vary with the width of rows or plants to be cultivated. Loosen Set Screws in Shank Clamp and move Shank Assemblies to desired location.

Recheck to be sure all Sweep or Shovel points touch level surface at the same time. Retighten Set Screws.

WEEDING HOES AND SHANKS (OPTIONAL EQUIPMENT)

Use Weeding Hoes (Fig. 5) on the first cultivation or for any small tender plants. They permit cultivating close to plants without covering them with soil.

1. Remove the Straight Shanks with Sweeps or Shovels attached (Fig. 4).
2. Attach Weeding Hoe Shanks to Tool Bar with Shank Clamps. Tighten Set Screw.
 - a. Weeding Hoes may be used without Sweeps or Shovels.
 - b. More than one pair can be used at any position on Tool Bar and moved up or down to the height desired.
3. Adjust Shanks in Shank Clamps so that Weeding Hoes touch level surface at the same time. Tighten Set Screws securely.

HILLERS AND SHANKS (OPTIONAL EQUIPMENT)

Use Hillers (Fig. 6) in place of the Straight Shanks with Sweeps or Shovels attached for hilling any kind of plant.

1. Remove the Straight Shanks with Sweeps or Shovels attached (Fig. 4).

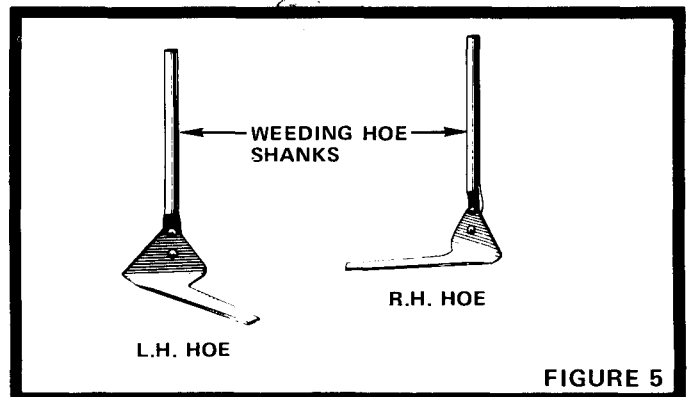


FIGURE 5

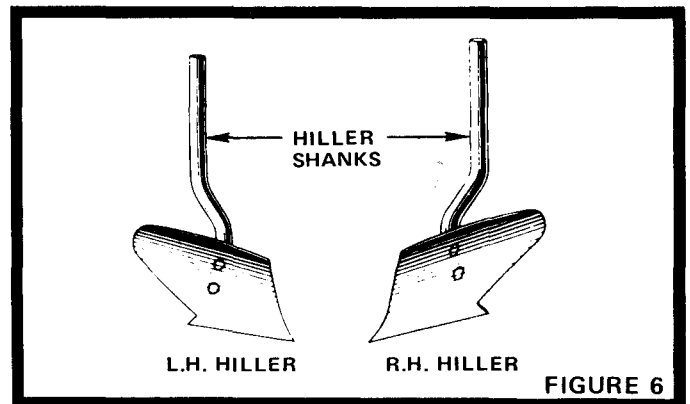


FIGURE 6

2. Attach Hiller Shanks to Tool Bar with Shank Clamps. Tighten Set Screws.
 - a. Hillers may be used without Sweeps or Shovels.
 - b. They may be moved to any desired position on the Tool Bar and up or down to the height desired.
 - c. They can be used as furrow openers by reversing the Hillers and setting them together.
3. Adjust Shanks in Shank Clamps so that Hillers touch level surface at the same time. Tighten Set Screws securely.

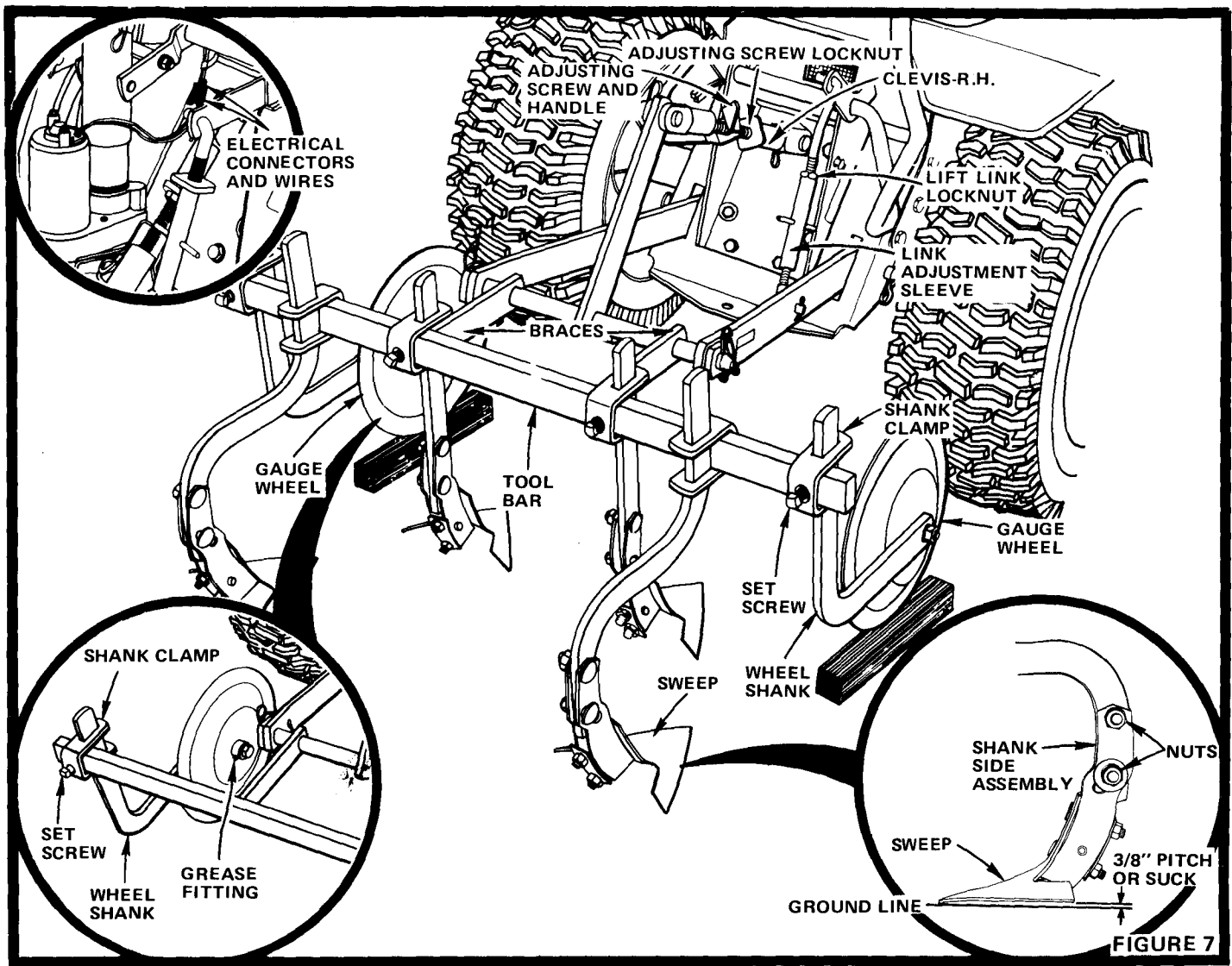


FIGURE 7

OPERATION

LEVELING (SIDE TO SIDE)

1. Loosen Lift Link Locknut (Fig. 7).
2. Turn Link Adjustment Sleeve (counterclockwise to lengthen linkage) until the points of the Sweeps or Shovels touch level surface at the same time.
NOTE: It may also be necessary to loosen Set Screw in Clamp and move Shank up or down so that all Sweep or Shovel points touch level surface at the same time.
3. After adjusting, tighten Locknut or Jam Nut against Link Adjustment Sleeve.

LEVELING (FRONT TO REAR)

1. Loosen Adjusting Screw Locknut (Fig. 7).
2. Turn Handle of Adjusting Screw and Handle (clockwise to shorten linkage) until Tool Bar and Braces are parallel with ground.
3. After adjusting, tighten Adjusting Screw Locknut against Clevis - R.H.

SWEEP OR SHOVEL PITCH

1. Loosen the two Nuts in each Shank Side Assembly (Fig. 7 - R.H. - INSET).
2. Move Sweep or Shovel forward or backward to obtain the proper 3/8 inch Pitch or Suck.
3. Retighten Nuts securely.

GAUGE WHEEL SETTING

1. Adjust Gauge Wheels to meet your requirements for proper penetration of Sweeps or Shovels by loosening the Set Screw in the Shank Clamp and moving Wheel Shanks up or down as required (Fig. 7).

2. Be sure to adjust both Gauge Wheels identically. Retighten Set Screws securely.
3. Level Cultivator, refer to "Leveling - Side to Side".

ELECTRIC HITCH USERS

Care must be taken so that operating parts do not interfere with wires on Electric Hitch (Fig. 7 - Upper - INSET).

MAINTENANCE

LUBRICATION

Frequently (at least every four hours) grease Gauge Wheels thru a Grease Fitting on each Wheel. Use Amdex No. 1 E.P. Grease (or equivalent). Grease each fitting until grease appears around Wheel Hub (Fig. 7 - L.H. - INSET).

GENERAL

After each use, tighten all bolts, nuts and set screws.

STORAGE

When Cultivator is not being used, remove all dirt and rust and touch up with paint.

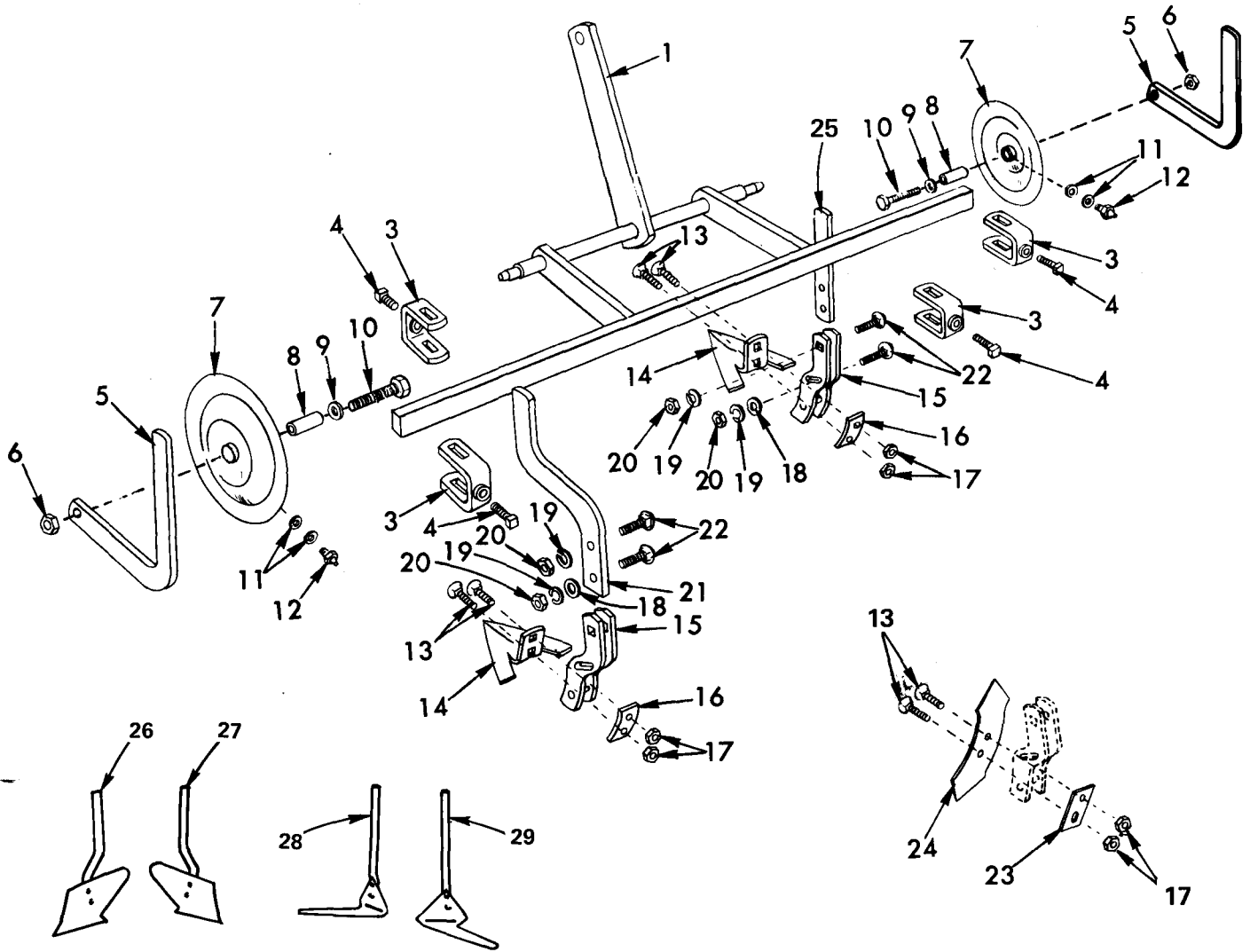
Apply a light coat of grease or rust preventative to Sweeps or Shovels, Hillers or Hoes. Lubricate Gauge Wheels, refer to "Lubrication".

Always store inside a dry area.

Sears, Roebuck and Co. reserves the right to make any changes in design or improvements without imposing any obligation to install the same upon its items heretofore manufactured.

REPAIR PARTS

CULTIVATOR TOOL BAR--MODEL NUMBER 917.252210



KEY NO.	PART NO.	DESCRIPTION
1	606A46	Frame (Tool Bar)
3	606A121	Shank Clamp with Set Screw (Inc. Key No. 4)
4	4521P	Set Screw, Sq. Hd. Oval Point 1/2 - 20 x 1
5	1335H	Wheel Shank
6	STD541050	*Hex Nut 1/2 - 13 UNC
7	575PA35	Gauge Wheel
8	1337H	Wheel Bearing
9	STD551050	*Washer 17/32 x 1 - 1/16 x 13 Ga.
10	3048P	Bolt, Hex 1/2 - 13 x 3 - 1/2
11	1899H	Washer
12	6855M	Grease Fitting
13	31P	+Bolt, Sq. Neck Plow 3/8 - 16 x 2 - 1/4
14	365H	+Sweep
15	575PA272	Shank Side Assembly
16	361H	+Washer Plate
17	STD541037+	*Hex Nut 3/8 - 16 UNC
18	1522P	Washer 1/2 x 1 - 1/4 x 14 Ga.
19	STD551143	*Lockwasher 7/16
20	STD541043	*Hex Nut 7/16 - 14 UNC
21	1334H	Shank, Offset
22	29P	Bolt, Sq. Neck Carriage 7/16 - 14 x 1 - 1/2 Short Shoulder

KEY NO.	PART NO.	DESCRIPTION
23	8149M	+Washer Plate
24	8153M	+Double Point Shovel
25	1333H	Shank, Straight
26	606A119	Shank and Hiller - R.H.
27	606A118	Shank and Hiller - L.H.
28	606A117	Shank and Hoe - R.H.
29	606A116	Shank and Hoe - L.H.
---	2557R	Amdex No. 1 E.P. Grease (Not furnished with your Cultivator Tool Bar)
---	1740J	Owners Manual

*STANDARD HARDWARE--PURCHASE LOCALLY

+OPTIONAL EQUIPMENT NOT FURNISHED WITH YOUR CULTIVATOR TOOL BAR KEY NO'S. 13, 14, 16 AND 17 COMPOSE CATALOG NO. 25222. KEY NO'S. 13, 17, 23 AND 24 COMPOSE CATALOG NO. 25223. KEY NO'S. 26, 27, 28 AND 29 COMPOSE CATALOG NO. 25227--A SET OF TWO WEEDING HOES & HILLERS. AVAILABLE FROM SEARS.



Sears

**MODEL NO.
917.252210**

HOW TO ORDER REPAIR PARTS

MODEL NUMBER

The Model Number will be found on the Model Plate attached to the L.H. side of the Tool Bar Frame. Always mention the Model Number when requesting service or repair parts for your Cultivator Tool Bar.

REPAIR PARTS

All parts listed herein may be ordered from any SEARS, ROEBUCK AND CO. retail or catalog store.

WHEN ORDERING REPAIR PARTS, ALWAYS GIVE THE FOLLOWING INFORMATION:

- THE PART NUMBER
- THE PART DESCRIPTION
- THE MODEL NUMBER
- THE NAME OF MERCHANDISE

If the parts you need are not stocked locally, your order will be electronically transmitted to a Sears Repair Parts Distribution Center for "expedited handling".