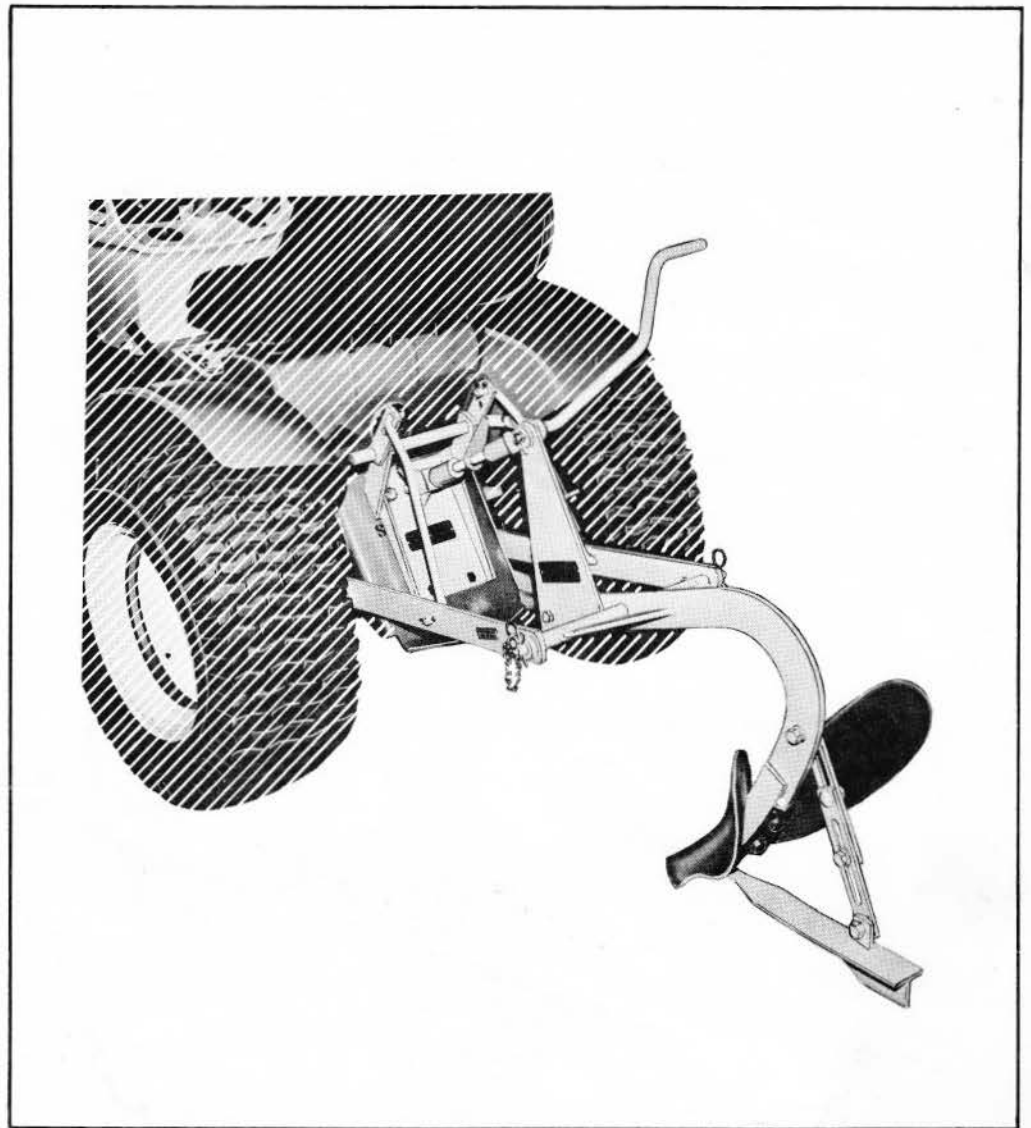


Sears

owners
manual

MODEL NO.
917.252280



SWEEP HOLDER WITH MIDDLEBUSTER

- Assembly
- Operating
- Maintenance
- Repair Parts

Sears, Roebuck and Co., Chicago, Ill. 60607 U.S.A.
and Simpsons Sears Limited, Toronto

introduction

The Sweep-Holder was designed for the Suburbanite who desires to use a middlebuster, sweep, corn shovel, furrower, and various other shovels. The Sweep-Holder is shipped less various tools so the customer may purchase the type that meets his needs. The customer may buy the ground working tools of his choice from a local Sears, Roebuck and Co. or Simpsons-Sears Limited store. The beam is so designed that regular sweep bolts or heel bolts may be used.

Each Sweep-Holder is given a thorough inspection before shipment; however, it is very important that it be again thoroughly checked at the time of receipt, to ascertain if any loss or damage had occurred in transit. Your shipment consists of the following package:

1 carton Sweep-Holder with middlebuster

Sears, Roebuck and Co. or Simpsons-Sears Limited reserves the right to make any changes in design or improvements without imposing any obligation to install the same upon its implements heretofore manufactured.

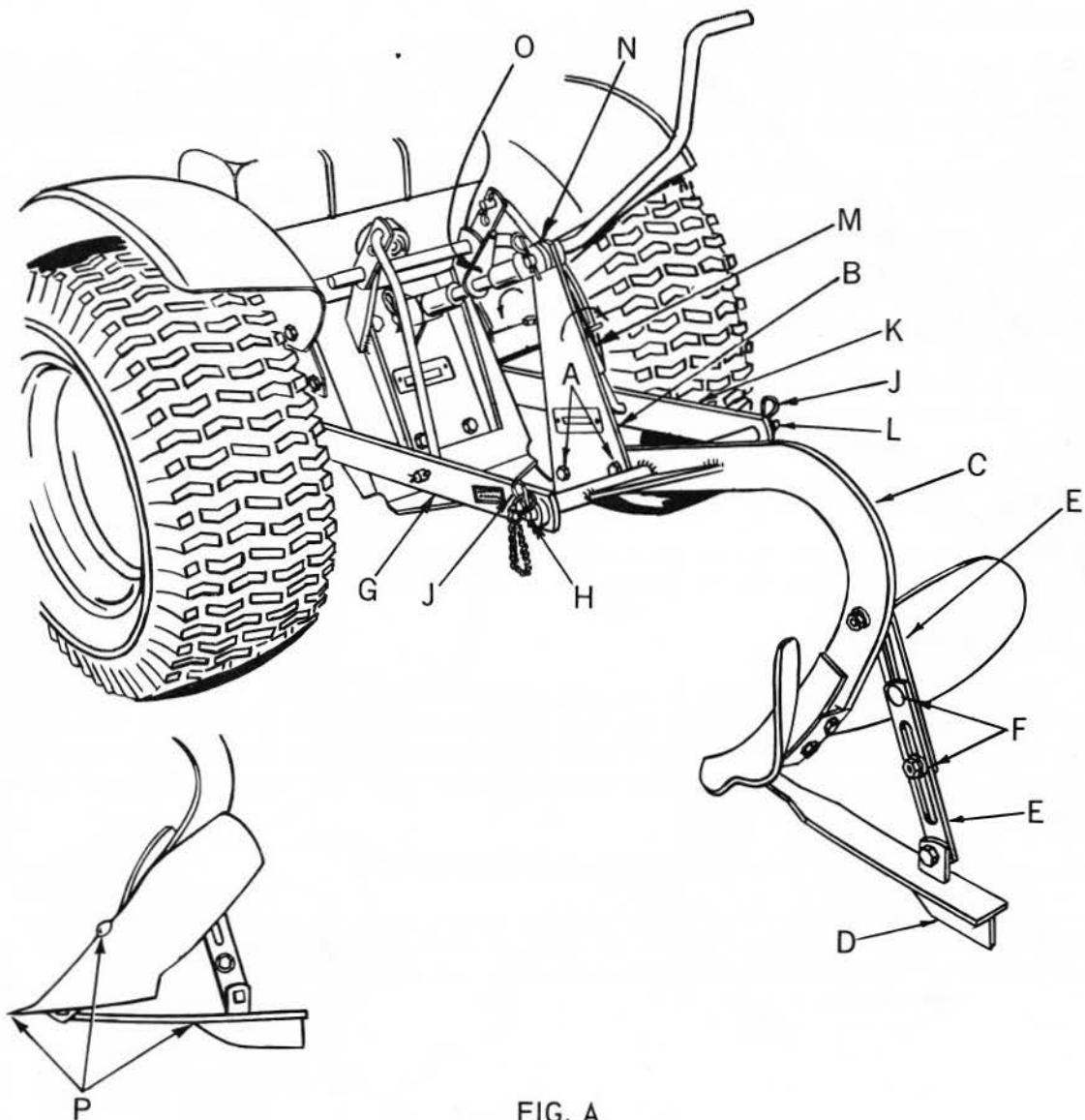


FIG. A

assembly

A letter in the instructions on page 2 refer to a letter in the above drawing except when otherwise stated. When R.H. (Right Hand), or L.H. (Left Hand) are used, it should be understood to mean from a position behind and facing the Sweep-Holder or direction of travel.

assembly (cont .)

1. Remove bolts (A), from upper hitch bar (B), and frame (C).
2. Assemble upper hitch bar (B), to frame (C) in upright position as shown in Fig.A, and secure with bolts (A), lockwashers and nuts removed in step 1. Tighten bolts securely.
3. Rotate heel weldment (D), under frame (C), as shown, and assemble the two heel braces (E), together with two 7/16 x 1 carriage bolts (F), flat washers and hex nuts.
4. Bolt middlebuster to frame as shown, using regular middlebuster bolts, washer plates, and hex nuts. NOTE: The lowest part of middlebuster should not be below the top of the heel fin, as the heel fin is used as a stabilizer. Refer to (P, Fig. A).

For adjusting heel see heel adjustment below.

assembly of sweep-holder to tractor

1. Back tractor into position to attach Sweep-Holder and slip L.H. hitch bar and bushings (G), over L.H. link pin (H), on Sweep-Holder and secure with retainer spring (J).
2. Slip R.H. hitch bar and bushings (K), over R.H. link pin (L), and secure with retainer spring (J). NOTE: R.H. hitch bar and bushings (M), is adjustable. Rotate turnbuckle so that R.H. hitch bar and bushings (K), slides over R.H. pin (L), when Sweep-Holder is verticle and tractor is on level ground. See Depth Adjustment below.
3. Assemble clevis (N), to upper hitch bar (B), and secure with retainer spring. NOTE: Adjusting screw and handle is adjustable -- see below.

operating instructions

depth control

There is a turnbuckle (M), on the linkage of the Sweep-Holder for leveling. Adjust the turnbuckle (M), on the R.H. lift link so that beam is straight up and down when in operation. Rotate turnbuckle from left to right to lengthen linkage.

adjusting screw and handle

The adjusting screw and handle (O), is the means of setting the correct pitch of the ground working tool. Rotate the handle to the left to shorten the top linkage which will increase the pitch or suck of the ground working tool.

heel adjustment

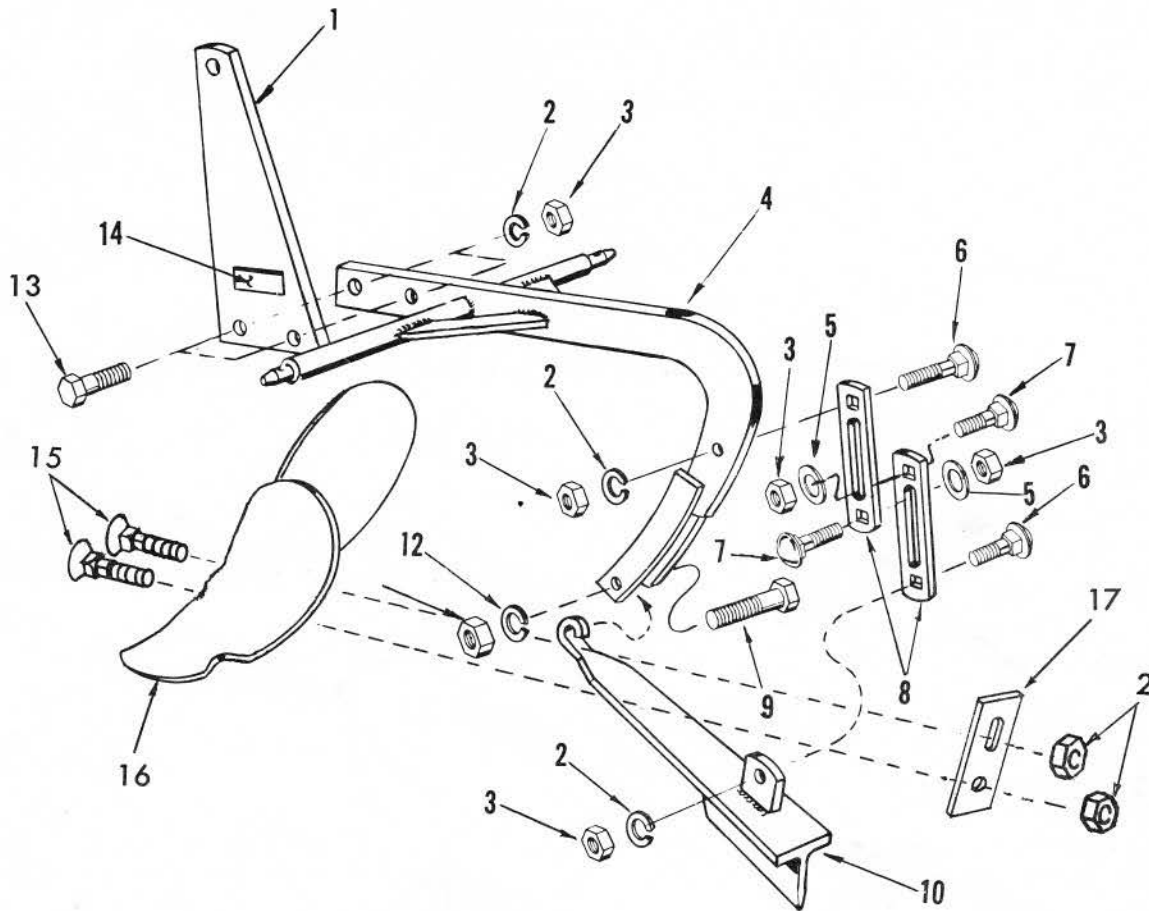
After the proper pitch and depth of the ground working tool is acquired, the heel (D), should be adjusted. Loosen the bolts (F), in the heel braces and push the heel down so that the heel is level with furrow bottom, and that the heel fin is cutting in the bottom of the furrow. The heel braces are slotted so that the heel may be adjusted to operate level in the soil regardless of the pitch of the ground working wool. The heel must be operated level to get full stability.

maintenance

When Sweep-Holder is to be stored for several days or longer, clean the ground working tools and heel thoroughly and cover them with a coat of heavy grease or rust preventative. Always store in a dry area. The ground working tools and the fin on the heel should always be kept sharp and polished at all times.

repair parts

SWEEP-HOLDER WITH MIDDLEBUSTER MODEL NUMBER 917.252280



634x142

KEY NO.	PART NO.	DESCRIPTION	KEY NO.	PART NO.	DESCRIPTION
1	1392H	Upper Hitch Bar	10	575PA271	Heel Weldment
2	1001P	Lockwasher 7/16	11	502P	Nut, Hex 1/2-13 UNC
3	500P	Nut, Hex 7/16-14 UNC	12	1000P	Lockwasher 1/2
4	606A94A	Frame	13	3036P	Bolt, Finished Hex Hd. 7/16-14 x 1 1/2 UNC
5	1544P	Washer, Flat 15/32 x 15/16 x 16 Ga.	14	3854R	Model Number Plate
6	24P	Bolt, Sq. Neck Carriage 7/16-14 x 1 1/2 UNC	15	33P	Plow Bolt 7/16-14 x 2 1/2
7	23P	Bolt, Sq. Neck Carriage 7/16-14 x 1 UNC	16	8154M	10" Middlebuster
8	7655M	Heel Brace	17	8149M	Washer Plate
9	3184P	Bolt, Finished Hex Hd. 1/2-13 x 2 1/4 UNC	---	3918R	Instruction and Parts Book

- notes -

- notes -

Sears

The Model Number will be found on a plate attached to the upper Hitch Bar. Always mention the Model Number when requesting service or repair parts for your SWEEP-HOLDER w/middlebuster.

All Parts listed herein may be ordered through SEARS, ROEBUCK AND CO. or SIMPSONS-SEARS LIMITED. When ordering parts by mail, selling prices will be furnished on request or parts will be shipped at prevailing prices and you will be billed accordingly.

WHEN ORDERING REPAIR PARTS, ALWAYS GIVE THE FOLLOWING INFORMATION AS SHOWN IN THIS LIST.

1. The PART NUMBER
2. The PART DESCRIPTION
3. The MODEL NUMBER
917.252280
4. The NAME OF ITEM-
Sweep-Holder w/middle-
buster

When you buy merchandise from Sears you get an extra something that nobody else can offer . . . Sears Service.



Across town or across the country, wherever you live or move in the U.S.A., Sears Service follows you, providing trustworthy, competent service technicians using only Sears specified factory parts.

SEARS SERVICE
IS AT YOUR SERVICE
WHEREVER YOU LIVE
OR MOVE
IN THE U.S.A.

Sears, Roebuck and Co., Chicago, Ill. 60607 U.S.A.