

Sears

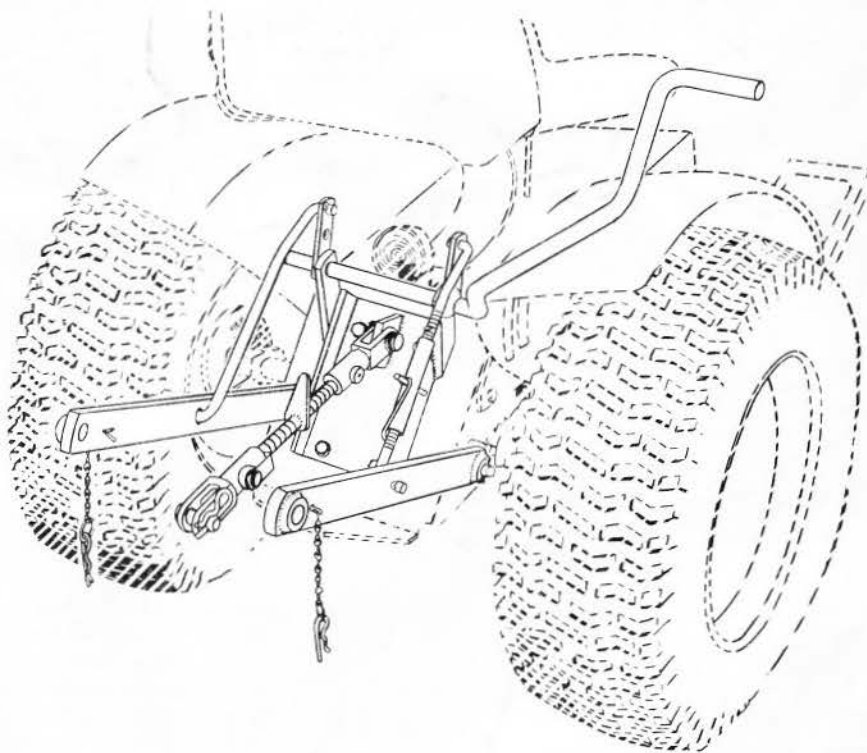
owners manual

# THREE POINT HITCH

MODEL NO.  
917.253060

UTION:  
Read Instructions  
Carefully

Assembly  
Repair Parts



SEARS, ROEBUCK AND CO. U.S.A.

SIMPSON-SEARS LIMITED, CANADA

# assembly

The following Hitch instructions covers various models of Sears Tractors. Therefore, the appearance of the tractor illustrated may not be exact to your own. However, all Hitch parts are basic and mount the same.

Setting Up Instructions should be studied very closely before beginning to assemble your Hitch. A letter in parentheses in the following instructions refers to an arrow in an adjoining Figure (Illustration), unless otherwise stated. When R.H. (Right Hand), or L.H. (Left Hand), are used it should be understood to mean from a position behind and facing the Tractor or direction of travel.

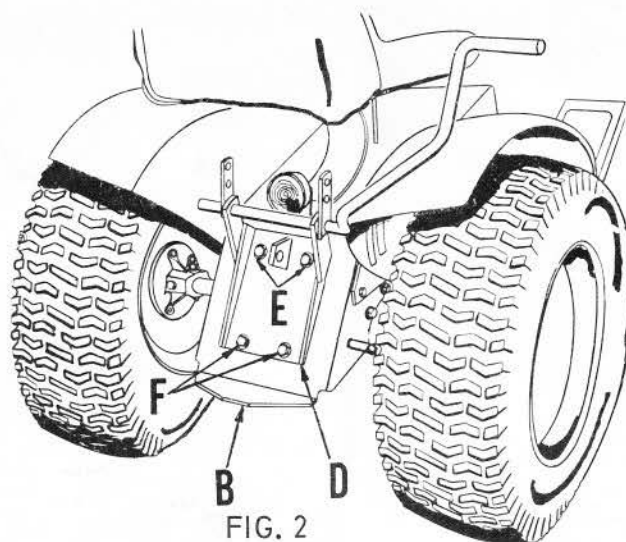


FIG. 2

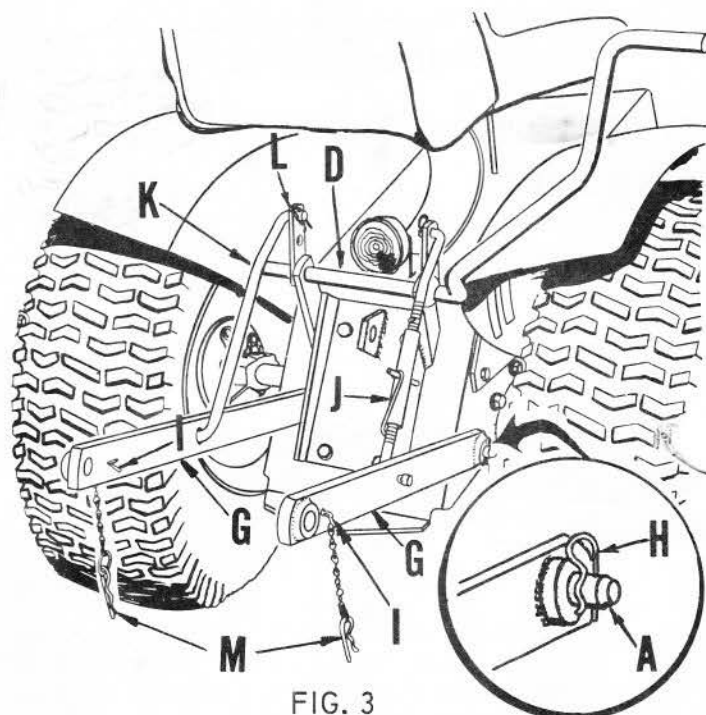


FIG. 3

6. Refer to Fig. 3. Assemble lower hitch bar and bushings (G), over lower link pins (A). Secure by inserting retainer springs (H), through holes in outer ends of lower link pin (A). Both R.H. and L.H. sides.

NOTE: Please take note of decals on lower hitch bar and bushings (G), for correct positioning of lower hitch bars.

7. Assemble cotter pins of chain, ring and cotter assembly (I), to lower hitch bar and bushings (G), as shown in both R.H. and L.H. sides, refer to Fig. 3. Spread ends of cotter pins to secure.

8. Refer to Fig. 3. Assemble upper and lower links (J), "turnbuckle with spring", to R.H. lower hitch bar (G), and in outer hole in arm on hitch mounting assembly (D), as shown. Secure with 5/32 x 1 cotters.

NOTE: Offset in lift links to top as shown in Fig. 3.

9. See Fig. 3. Assemble lift link - L.H. (K), to L.H. side in like manner and also secure with 5/32 x 1 cotters.

- NOTE: Offset of L.H. lift link (K), must also be to top as shown and it must also be assembled to outer hole (L), in arm of hitch mounting assembly (D).
10. Assemble retainer spring (M), to ring of chain, ring and cotter assembly (I), refer to Fig. 3.

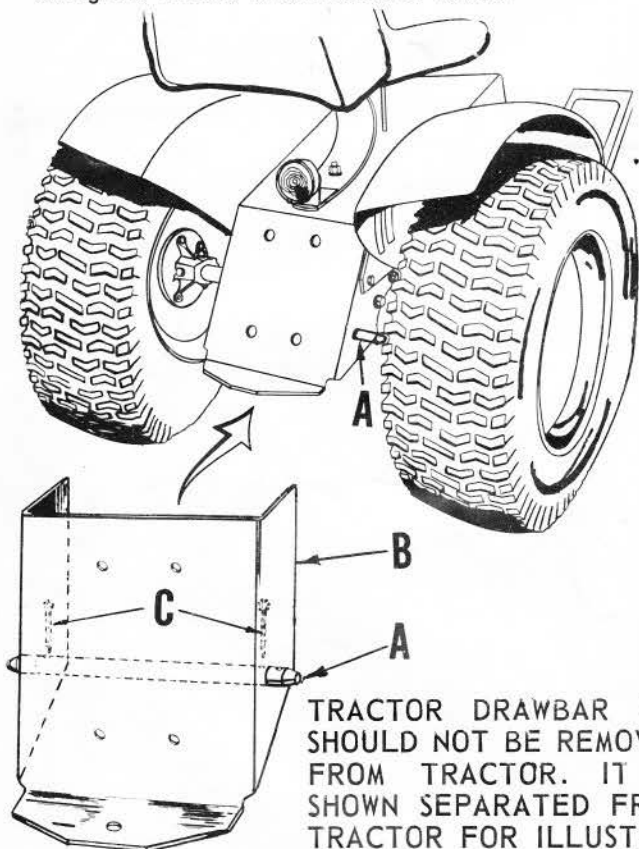


FIG. 1

TRACTOR DRAWBAR (B), SHOULD NOT BE REMOVED FROM TRACTOR. IT IS SHOWN SEPARATED FROM TRACTOR FOR ILLUSTRATION ONLY.

1. Remove parts from cartons and bag of parts and layout in readiness for assembly to tractor.
2. Refer to Fig. 1. Slip lower link pin (A), through holes in sides of tractor drawbar (B), as shown. NOTE: Insert and spread 3/16 x 1 cotter pins (C), thru inner holes of link pin (A), and underside of drawbar as shown in Fig. 1. If link pin (A), cannot be inserted this way, jack up tractor and remove one rear wheel.
3. Refer to Fig. 2. Assemble hitch mounting assembly with lever (D), to tractor drawbar (B), using two 1/2 x 1 1/4 hex bolts and lockwashers (E). Use upper holes in hitch mounting assembly (D), and upper holes in drawbar (B). NOTE: Lockwashers must be next to head of bolts.
4. Assemble two 7/16 x 1 1/4 hex bolts (F), thru lower holes in hitch mounting assembly (D), and drawbar (B). Secure with 7/16 lockwashers and hex nuts.
5. Tighten bolts (E and F), securely.

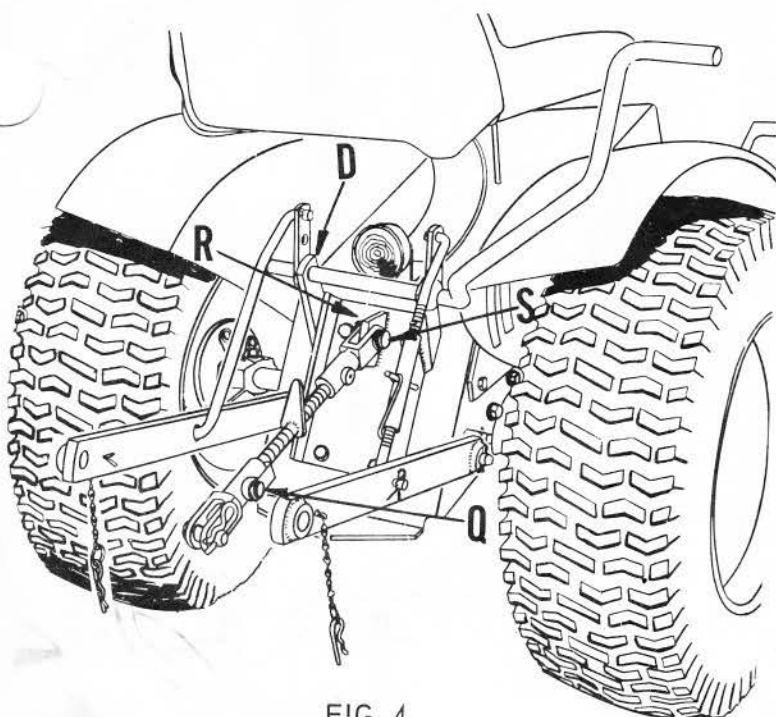
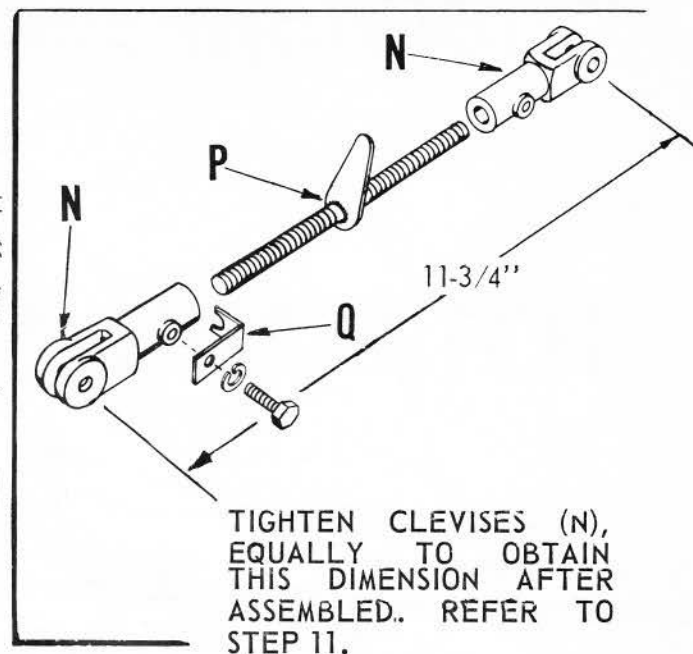


FIG. 4

11. Assemble clevises to adjusting screw and handle as shown in inset of Fig. 4. Turn clevises (N), on adjusting screw and handle (P), to obtain an overall uniform length of 11 $\frac{3}{4}$  inches.

NOTE: One clevis has R.H. threads and the other L.H. threads.



TIGHTEN CLEVISES (N), EQUALLY TO OBTAIN THIS DIMENSION AFTER ASSEMBLED. REFER TO STEP 11.

12. Secure adjusting screw spring (Q), to the clevis that has a drilled and tapped hole, with the  $\frac{1}{4}$  lockwasher and  $\frac{1}{4} \times \frac{3}{8}$  hex bolt. Tighten securely.
13. Refer to Fig. 4. Attach clevis that does NOT have spring (Q), to mounting plate (R), of hitch mount assembly (D). Secure with clevis pin (S), and a retainer spring.
14. The remaining clevis pin and retainer spring position in clevis with spring (Q), attached. This is the clevis that attaches to the hitch plate of the particular attachment being used. Refer to attachment Owners Manual.

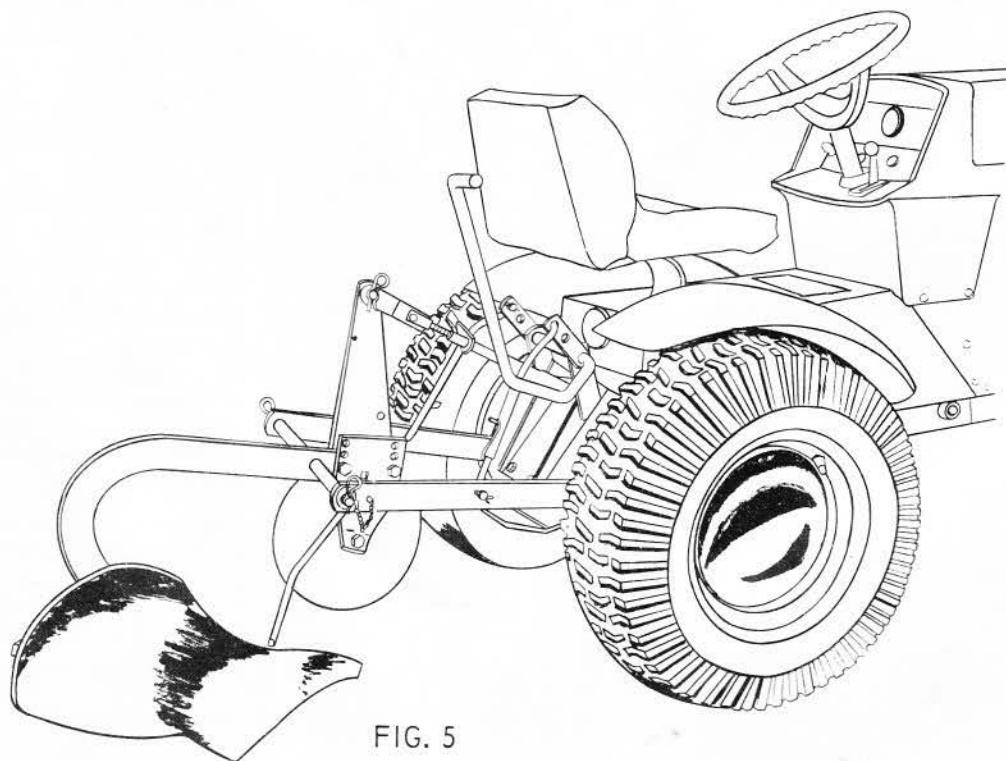


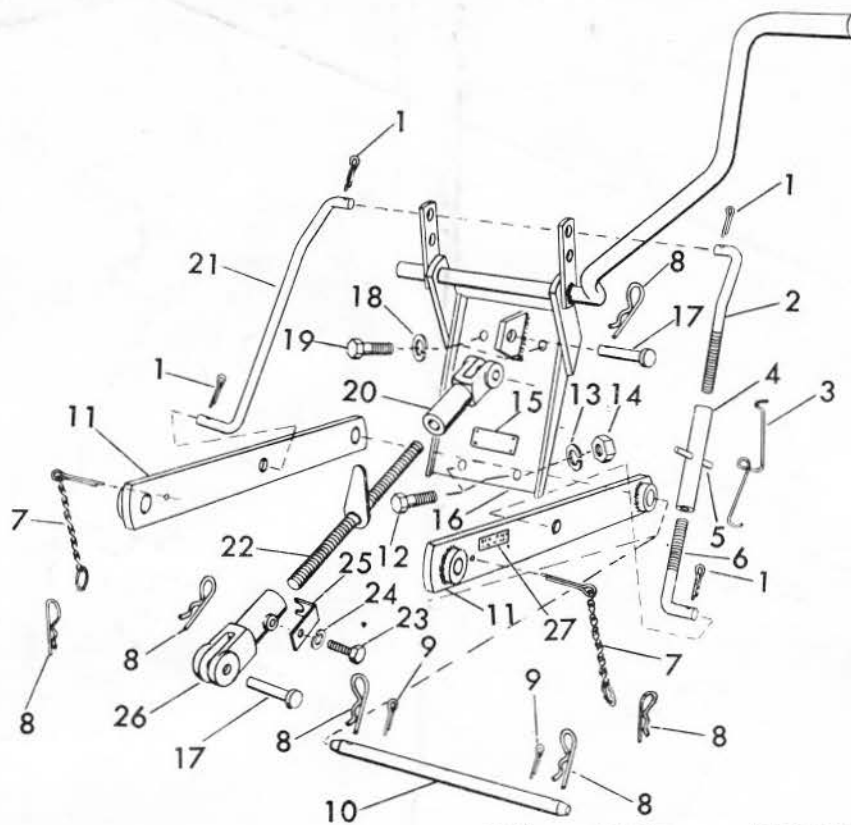
FIG. 5

Fig. 5 illustrates plow attached to Hitch and tractor. Instructions are given in each attachment Owners Manual pertaining to its own adjustments.

In extreme cases, the Hitch lever may touch the tractor seat. If this happens, move seat forward.

Make sure all cotter pins are spread and all bolts are tight.

Hitch should be removed from tractor when not in use.



634x153

KEY NO.	PART NO.	DESCRIPTION	KEY NO.	PART NO.	DESCRIPTION
1	2510P	Cotter Pin 5/32 x 1	15	3895R	Model Number Plate
2	8924H	Lift Link, Upper - R.H.	16	634A292	Hitch Mount Assembly with Lever (For Model Number 917.253050) Hy
3	1592H	Turnbuckle Spring	16	634A295	Hitch Mount Assembly with Lever (For Model Number 917.253060)
4	606A108	Turnbuckle, Spring and Roll Pin (Inc. Key No's. 3 and 5)	17	8940H	Clevis Pin
5	9710M	Roll Pin	18	1000P	Lockwasher 1/2
6	8923H	Lift Link, Lower - R. H.	19	3044P	Bolt, Hex 1/2 - 13 x 1 1/4
7	5012H	Chain, Ring and Cotter	20	8936H	Clevis, L.H. Thread
8	4940M	Retainer Spring	21	8925H	Lift Link - L.H.
9	2511P	Cotter Pin 3/16 x 1	22	634A294	Adjusting Screw and Handle
10	1049R	Link Pin, Lower	23	3002P	Bolt, Hex 1/4 - 20 x 3/8
11	634A290	Hitch Bar and Bushings, Lower	24	1002P	Lockwasher 1/4 Heavy
12	3035P	Bolt, Hex 7/16 - 14 x 1 1/4	25	8939H	Spring, Adjusting Screw
13	1001P	Lockwasher 7/16	26	8935H	Clevis, R.H. Thread
14	500P	Nut, Hex 7/16 - 14	27	6798H	Scotchcal
			---	2224M	Drive Stud (For Model Number Plate)
			---	3896R	Owners Manual

### MODEL NO. 917.253060

The Model Number will be found on a plate attached to the Hitch Mount Assembly. Always mention the Model Number when requesting service or repair parts for your 3 Point Hitch.

SEARS SERVICE IS AT YOUR SERVICE WHEREVER YOU LIVE OR MOVE IN THE U.S.A. Your Sears merchandise takes on added value when you discover that Sears has over 2,000 Service Units throughout the country. Each is staffed by Sears-trained, professional technicians using Sears approved parts and methods.

### HOW TO ORDER REPAIR PARTS

All parts listed herein may be ordered through SEARS, ROEBUCK AND CO. or SIMPSON-SEARS LIMITED. When ordering parts by mail, selling prices will be furnished on request or parts will be shipped at prevailing prices and you will be billed accordingly.

WHEN ORDERING REPAIR PARTS, ALWAYS GIVE THE FOLLOWING INFORMATION AS SHOWN IN THIS LIST.

1. The PART NUMBER
2. The MODEL NUMBER 917.253060
3. The PART DESCRIPTION
4. The NAME OF ITEM-- 3 Point Hitch.