

Sears

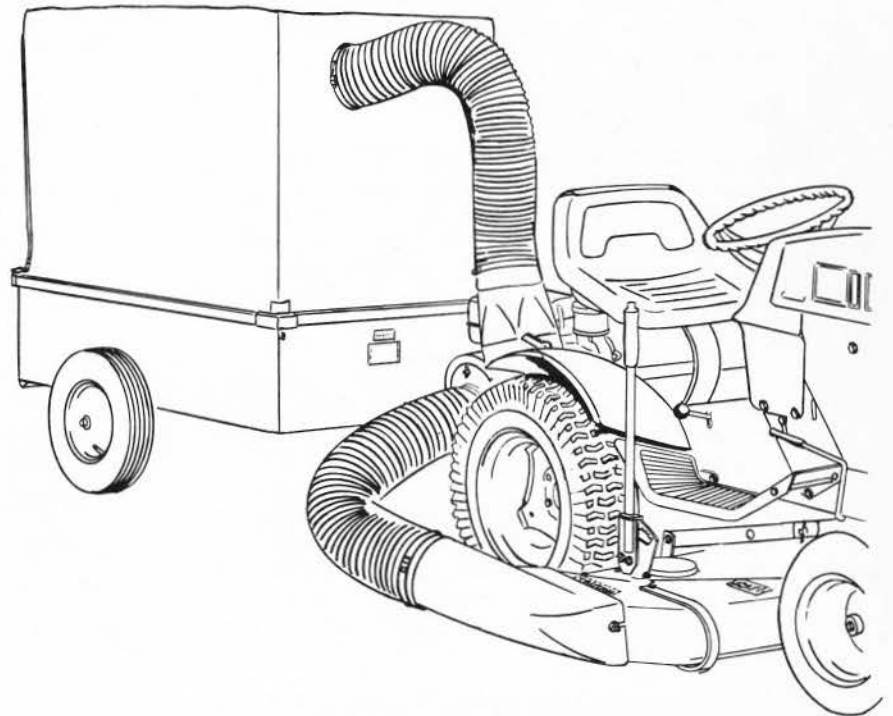
owners manual

# VACUUM COLLECTOR

**MODEL NO.  
917.25390**

**CAUTION:**  
Read Rules for  
Safe Operation  
and Instructions  
Carefully

- Assembly
- Operating
- Maintenance
- Repair Parts



**SEARS, ROEBUCK AND CO. U.S.A.**

SIMPSONS-SEARS LIMITED, CANADA

## GUARANTEE

During the first year, we will repair your attachment free of charge if found defective in material or workmanship. This guarantee service is available by simply contacting any of our stores or service centers throughout the United States or Canada.

The guarantee is limited to 30 days if the item is used for commercial purposes.  
**SEARS, ROEBUCK AND CO.—SIMPSON-SEARS, LTD.**

## IMPORTANT rules for safe operation

1. Do not allow children to operate VACUUM COLLECTOR, Tractor or Mower. Do not allow adults to operate them without proper instruction.
2. Each operator should become familiar with the different sections of Owners Manuals (Tractor, Engines and Mower), before operating the VACUUM COLLECTOR.
3. Never allow your hands, any other part of your body, or your clothing near any moving parts or Mower discharge chute, while engine is running. Make sure you are wearing work shoes while operating the VACUUM COLLECTOR.
4. Do not carry passengers.
5. Never operate the VACUUM COLLECTOR in the vicinity of children, pets or other persons.
6. Stop engine on VACUUM COLLECTOR and Tractor. Disengage power to Mower. Shift into neutral position, set parking brake and remove ignition key before leaving operator position.
7. Disengage Mower, shift Tractor into neutral before attempting to start VACUUM COLLECTOR engine. The above also applies for the Tractor engine but also disengage clutch.
8. Take all precautions when leaving VACUUM COLLECTOR unattended; shift Tractor into neutral, set parking brake, stop VACUUM COLLECTOR and Tractor engines and remove ignition key. Keep key in safe place out of reach of children.
9. Do not stop or start suddenly when going up or downhill. Operate Tractor up and down the face of slopes; never across the face. Never operate Tractor on slopes with more than a 15 degree slope.
10. Keep foot and parking brake in good adjustment.
11. Do not operate the Tractor in high gear going downhill, and do not turn sharp corners while going downhill.
12. Do not shift gears while going up steep hills. Choose a low enough gear to climb hill without stopping and shifting gears.
13. Do not shift gears while Tractor is moving.
14. If operating on uneven terrain, reduce Tractor speed and use caution in negotiating ditches, etc. Do not drive close to such things as creeks or ponds. Banks that might not support the weight of the machine could cause an upset.
15. Tractor should not be operated on public roads or streets. If necessary to cross roads or streets, stop and observe for traffic clearance before crossing.
16. Handle gasoline with care--it is highly flammable.
  - A. Use approved gasoline container.
  - B. Never remove cap or add gasoline to a running or hot engine or fill fuel tank indoors. Wipe up spilled gasoline before starting engine.
  - C. Never start or run the Tractor or VACUUM COLLECTOR indoors as the exhaust from the engines contain carbon monoxide which is a tasteless odorless, deadly poison.
17. Keep Tractor and VACUUM COLLECTOR in good operating condition, and keep safety devices in place. Use guards as instructed in this Manual, the Tractor, Mower and Engines Owners Manuals.
18. Keep all nuts, bolts and screws tight to be sure equipment is in safe working condition.
19. Never store equipment with gasoline in the tanks inside a building where fumes may reach an open flame or spark. For long periods of storage, the gasoline tank should be drained and the gasoline discarded in a safe place. Allow engines to cool before storing in any enclosure.
20. To reduce fire hazard keep engines free of grass, leaves or excessive grease.
21. Do not change engine governor settings and overspeed engines. Excessive speed is dangerous and shortens engine life.
22. Use VACUUM COLLECTOR only in daylight or in good artificial light.
23. Never make a cutting height adjustment while Tractor engine is running if operator must dismount to do so.

## rules for safe operation (cont.)

24. If Mower chute should become clogged, shut engines off, disengage Mower and disconnect spark plugs before unclogging chute.
25. Check Mower blade mounting bolts for proper tightness at frequent intervals.
26. Board Tractor from left hand side only, away from discharge chute.
27. After striking any foreign object the Tractor, Mower and VACUUM COLLECTOR should be stopped and inspected for damage. If damage has occurred, it should be repaired before resuming operation.

## reference drawing for assembly and instructions

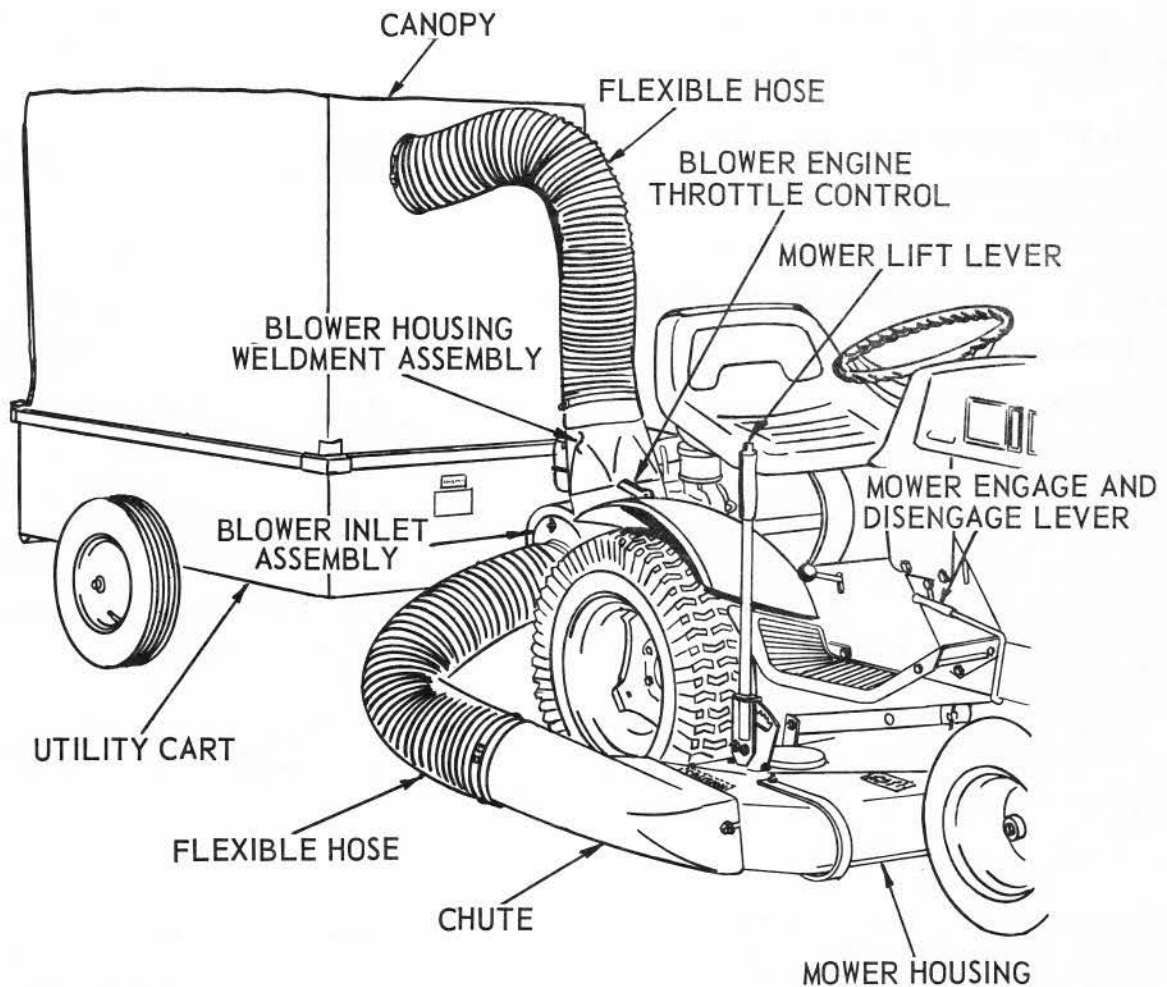


FIG. 1

# introduction

This Product has been designed, engineered and manufactured to give you the best possible dependability and performance.

Should you experience any problem you cannot easily remedy, please contact your nearest Sears, Roebuck or Simpsons-Sears, Ltd. Store. They have well qualified, competent trained technicians and the proper tools to service or repair this unit.

It is important that the operator ALWAYS OBSERVES THE "RULES FOR SAFE OPERATION" as well as other instructions contained in the Vacuum Collector, Tractor, Mower, Chute, Cart and Engine Manuals.

We have provided this Manual to help you operate your Vacuum Collector with utmost efficiency. We urge you to study this Manual so you will understand your new Vacuum Collector thoroughly before operating it. We suggest that you take care of your Manual so that it will be available for future reference should you need it.

Your Vacuum Collector was designed to be used with the Rotary Mower and Utility Cart. It will pick up leaves, grass clippings and loose thatch. The material is then deposited in the canopy covered cart. This eliminates the usual manual labor for this lawn care. This unit can be used anywhere the Mower is normally operated.

## assembly

A letter in parentheses in the following instructions refers to an arrow in the adjoining Figure (Illustration), except when otherwise stated. When R.H. (Right Hand) or L.H. (Left Hand) is used, it should be understood to mean as if one were seated on the Tractor seat facing forward.

### install mower chute

1. Instructions for assembly of the chute to mower are in a separate Manual in the chute carton. Attach chute to mower at this time.

### attach blower assembly to tractor

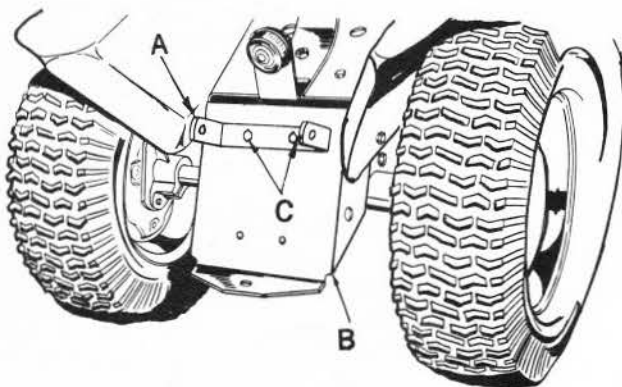


FIG. 2

1. Assemble hitch support (A), to tractor drawbar (B), with two hex bolts  $1/2 \times 1-1/4$  and lockwashers (C), provided in plastic bag. NOTE: Lockwashers under head of bolts. Tighten bolts securely.

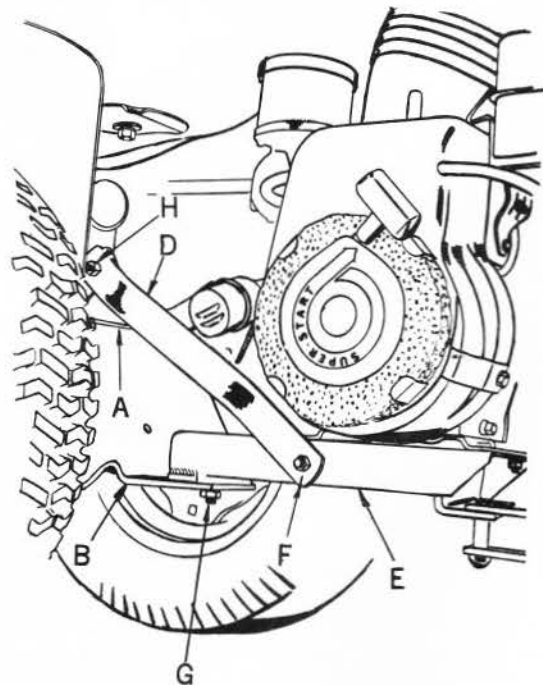


FIG. 3

2. Assemble hitch support braces (D), to hitch channel weldment (E), with two of four hex bolts  $3/8 \times 1$ , lockwashers and hex nuts (F). Hardware provided.
3. Attach hitch channel (E), to tractor drawbar (B), with hex bolt  $5/8 \times 1-1/4$ , lockwasher and hex nut (G). Attach hitch support braces (D), to hitch support (A), with the two remaining hex bolts  $3/8 \times 1$ , lockwashers and hex nuts (H), provided. Tighten all nuts securely.

# assembly (cont.)

## assembly of canopy cover and frame to cart

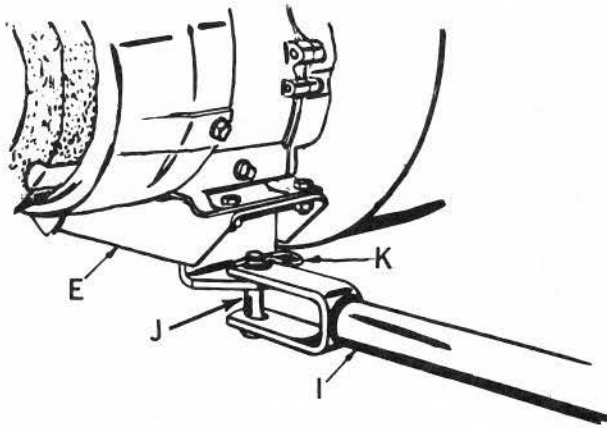


FIG. 4

1. Attach utility cart (I), to hitch channel (E), using hitch pin (J). Secure with retainer spring (K). Hitch pin and retainer spring shipped with cart.

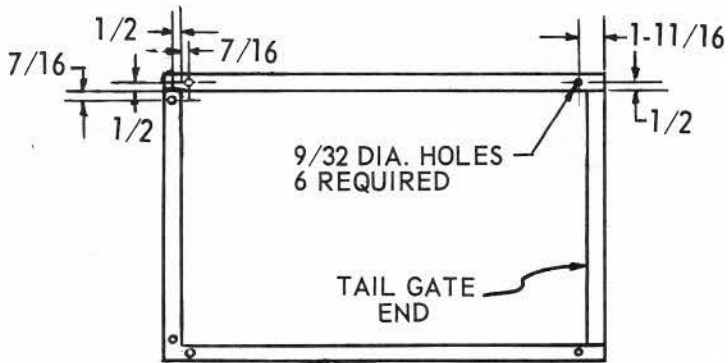


FIG. 5

2. Late model utility carts have holes in the top rails as shown above. If your cart does not have the six holes, drill six 9/32 holes as shown.

KEEP WORKING AREA CLEAR- ADULTS-

PETS-

CHILDREN..



REMOVE THE IGNITION KEY  
KEEP OUT OF REACH  
OF CHILDREN!



# assembly (cont.)

## assembly of canopy cover and frame to cart (cont.)

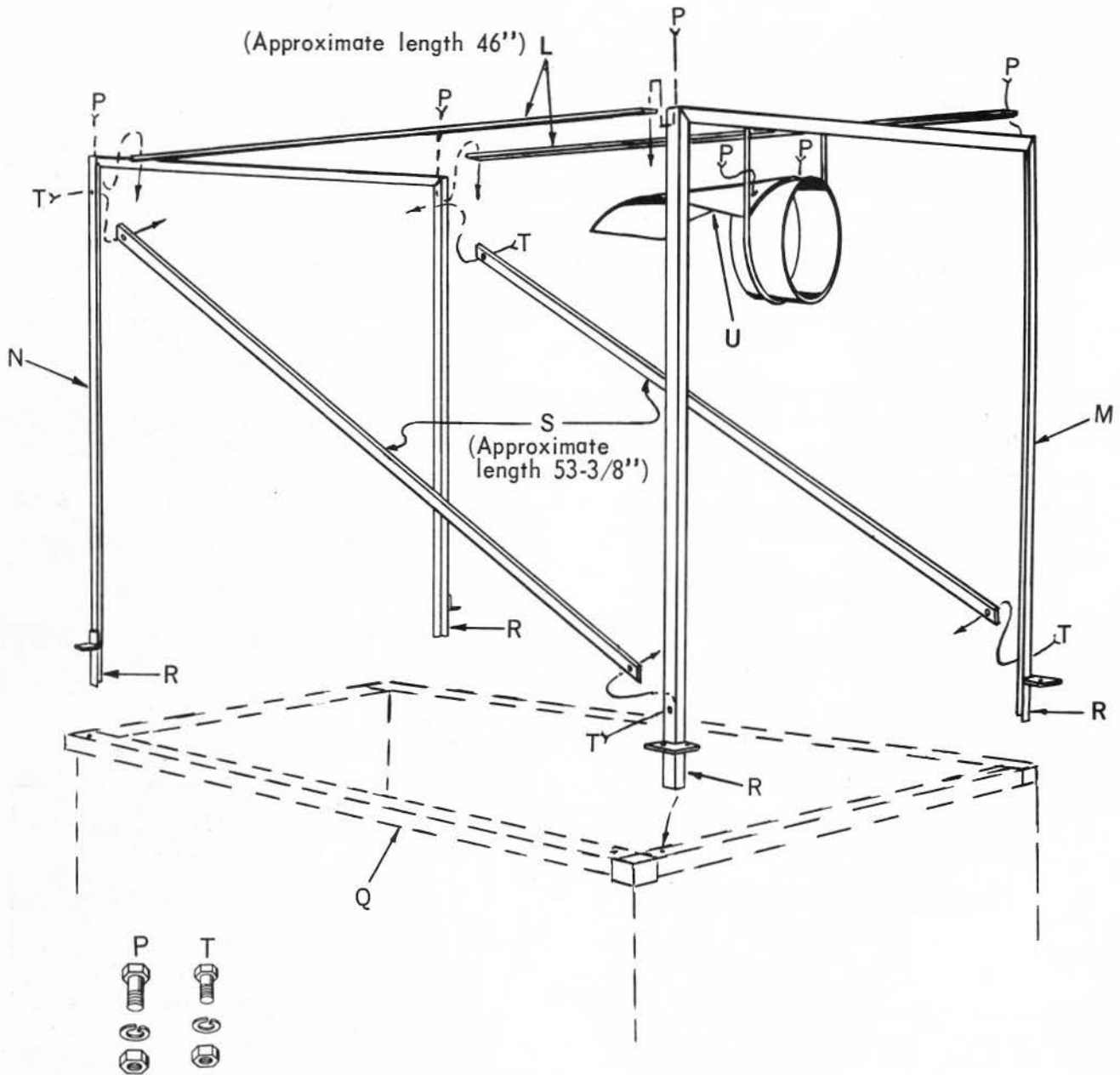


FIG. 6

3. Assemble the two canopy straps (L), to front and rear supports (M and N), with four hex bolts  $1/4 \times 5/8$ , lockwashers and hex nuts (P), provided. Tighten nuts securely.
4. Place the frame assembly (L, M and N), on cart (Q). NOTE: The open ends of the frame are to fit inside corners of cart (Q).
5. Assemble side braces (S), to front and rear supports (M and N), with hex bolts #10  $\times 1/2$ , lockwashers and hex nuts (T), provided.
6. Assemble chute deflector (U), to front support (M), with hex bolts  $1/4 \times 5/8$ , lockwashers and hex nuts (P), provided.

# assembly (cont.)

## assembly of canopy cover and frame to cart (cont.)

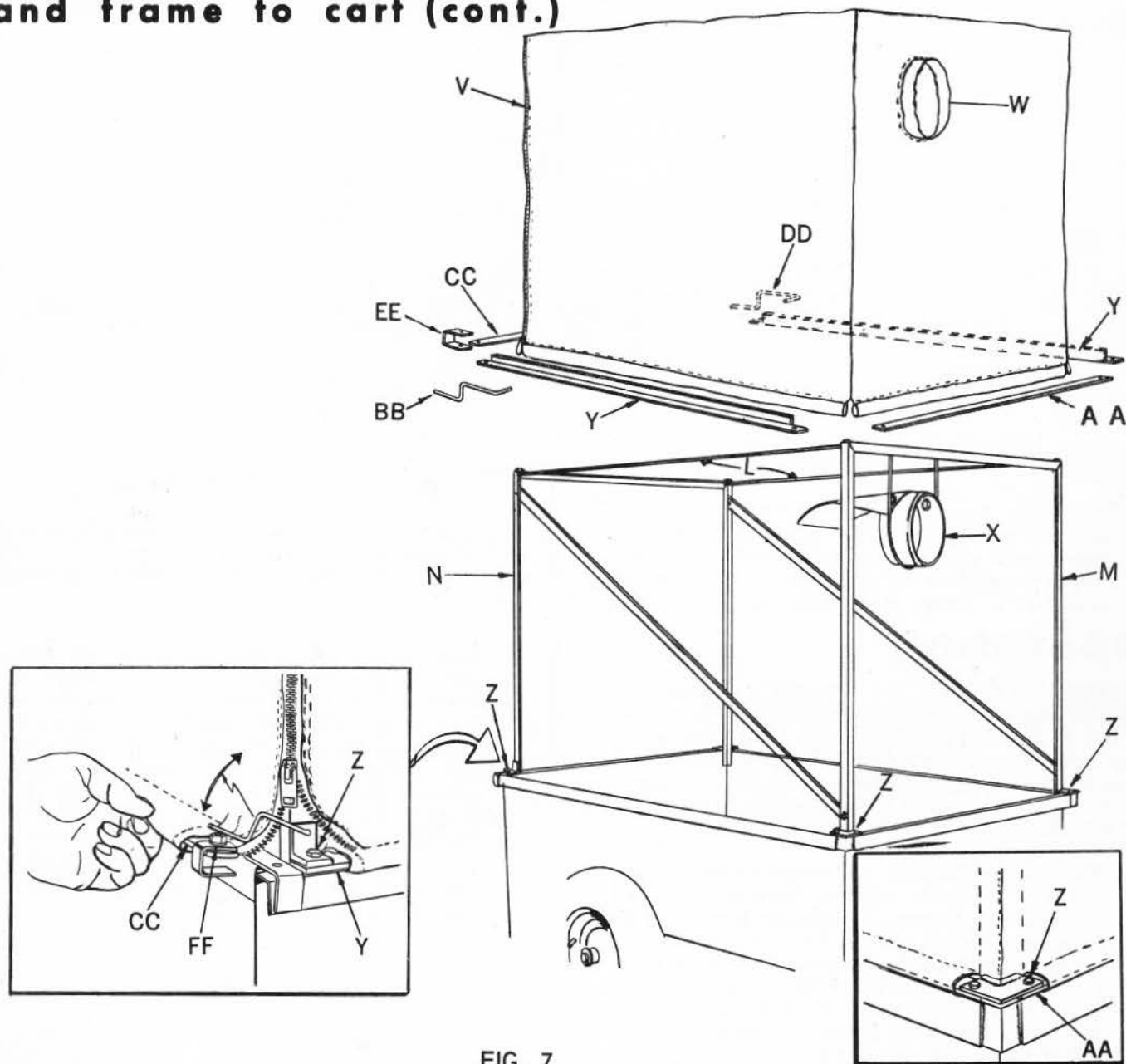


FIG. 7

7. Slip canopy (V), over frame assembly with zippered panel to rear. Make sure inlet opening (W), fits around chute sleeve (X). Slip canopy sides down to cart on all four sides.
8. Slip both bottom side straps (Y), (longest straps), through loop sleeves (V), and place ends under brackets of front and rear supports (M and N).
9. Secure rear supports (N), and bottom side-straps (Y), to cart with a hex bolt 1/4 x 1, lockwasher and hex nut (Z), at rear as shown. Tighten nuts securely.
10. Slip bottom front strap (AA), (slotted holes in end), in loop sleeve in front of canopy (V), and position front bottom strap under brackets of front support (M). Insert two hex bolts 1/4 x 1, lockwashers hex nuts (Z), in each front corner to hold front support, front and side bottom straps and canopy to cart as shown. Tighten nuts securely.
11. Attach R.H. latch (BB), in hole provided in lower R.H. side of rear support. Secure with cotter pin provided. Secure L.H. latch (DD), in same manner.  
NOTE: Cotter pin should be bent around latches, so latches are free.
12. Slip bottom rear-strap (CC), (round holes in end), in loop sleeve in rear of canopy. Attach rear hold down clips (EE), to rear strap (CC), as shown, with two hex bolts 1/4 x 1/2, lockwashers (internal tooth), and hex nuts (FF), provided. Tighten nuts securely.  
NOTE: Be sure canopy flaps are below bottom straps inside of cart, on all four sides. Hook rear bottom strap (CC), under cart side rail ends.
13. Pull zippers down at each rear corner of canopy and engage latches (BB and DD), over rear bottom strap (CC).

# assembly (cont.)

## assembly of hoses and clamps

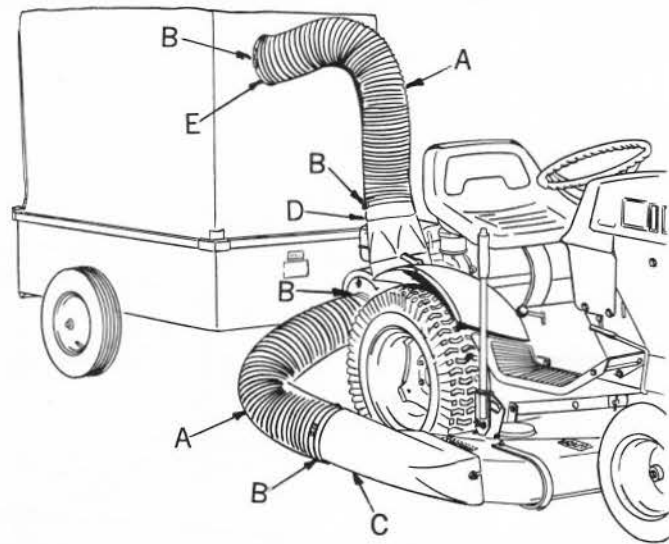


FIG. 8

1. Slip one of the two flexible hoses (A), with hose clamps (B), in position on mower chute (C), and to inlet of the blower housing (D). Tighten both clamps (B), sufficiently to hold hose (A), securely in place.
2. Attach upper hose (A), to outlet of blower housing (D), and secure with clamp (B). Attach other end of flexible hose (A), to canopy chute deflector (E). Position hose clamp (B).

## operating

BEFORE STARTING THE ENGINES, become thoroughly familiar with the Rules for Safe Operation, listed in the front of this Manual. Also, study Rules for Safe Operation listed in the Tractor, Mower and Engine Manuals. Study Operating Instructions listed in this, the Tractor and Mower Manuals. KNOW THE CONTROLS AND HOW TO STOP QUICKLY.

1. The Vacuum Collector engine crankcase is shipped with oil ready for use. However, check oil level before starting. If necessary, add oil to bring oil level up to the full mark on the dipstick. Refer to Engine Manual for the type of oil to use. Change oil after the first 2 hours of operation. Thereafter, change oil every 25 hours of operation. Check oil every 8 operating hours. Fill the fuel tank with Fresh, Regular grade gasoline. Capacity--1 gallon. Start the engine on the Vacuum Collector before seating yourself on the Tractor to prepare for operating unit.
2. Operate the unit in a large open space for familiarization with controls, etc.
3. Operate Vacuum Collector and Tractor engine at full throttle. You will quickly learn the proper speed for your ground conditions and the material being handled.
4. Operating machine with L.H. side of mower next to buildings, shrubs, trees, etc. will permit close trimming. After initial close trim, reverse direction and drive with chute side of mower (R.H. side), toward the area already cut.
5. Check the cart frequently and empty when necessary. CAUTION: Continued cutting with a full cart will cause mower chute, hoses and blower assembly to become clogged. This will require removing hoses, etc. for unclogging. Occasionally remove mower chute and blower housing inlet and clean inside surfaces.

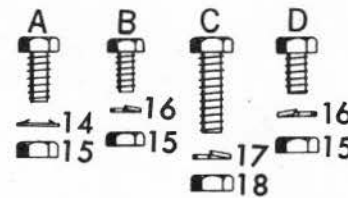
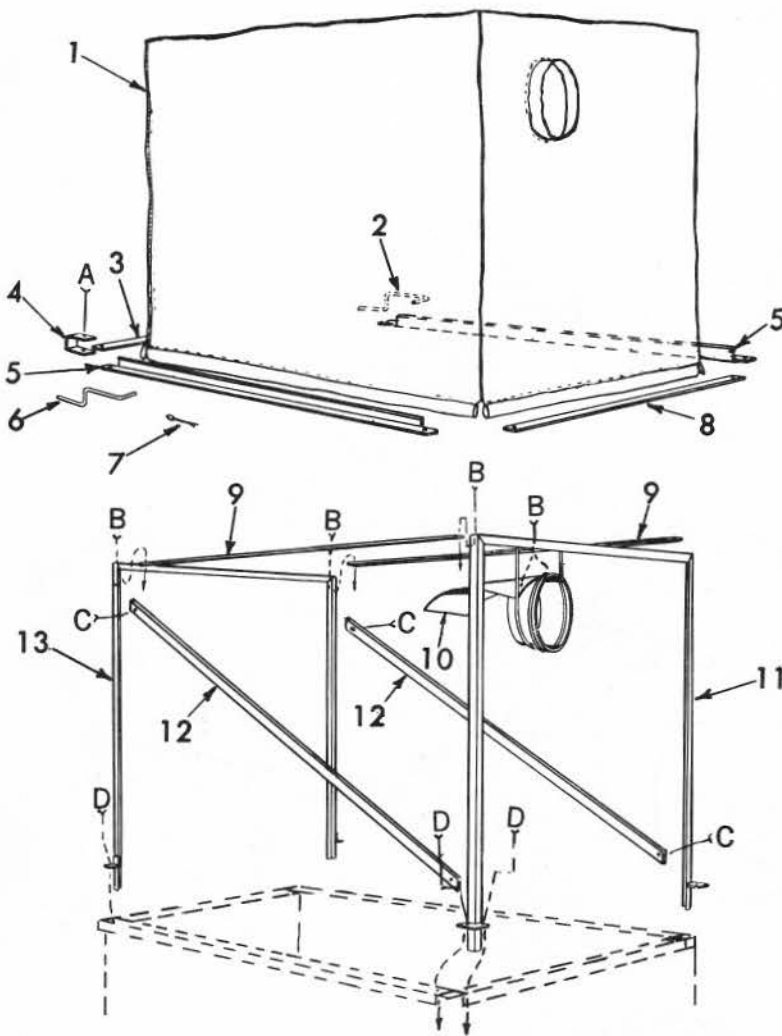
6. When cart is full, disengage mower and reduce Vacuum Collector engine speed. Drive to the area where cart is to be emptied. Unhook rear hold down strap, raise both zippers and fold rear flap up over top. Remove cart endgate and use a garden rake or fork to pull debris out from cart. Replace endgate, reattach rear flap and pull down zippers. Never leave debris in cart as it may mildew or decay, generating possible spontaneous combustion. If canopy is left on cart for any length of time, raise rear flap so that air can circulate inside of canopy to keep it dry.

## maintenance

1. As with the tractor, it is important to clean the Vacuum Collector engine air cleaner periodically. Refer to engine manual. Also, refer to manual for other engine service information.
2. If the machine fails to pick up cut material it is an indication that clogging has occurred in system. Stop machine and disconnect hoses and chute for cleanout.
3. Do not perform any maintenance on your Vacuum Collector unless both engines have been shut-off and the spark plug wires removed from the spark plugs.
4. Do not store your Vacuum Collector for any length of time without first cleaning out the cart, hoses and chute. Raise the rear flap so that air can circulate inside the canopy to keep it dry.

# repair parts

VACUUM COLLECTOR  
MODEL NO. 917.25390



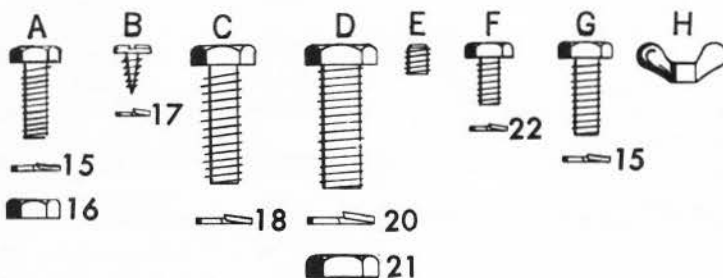
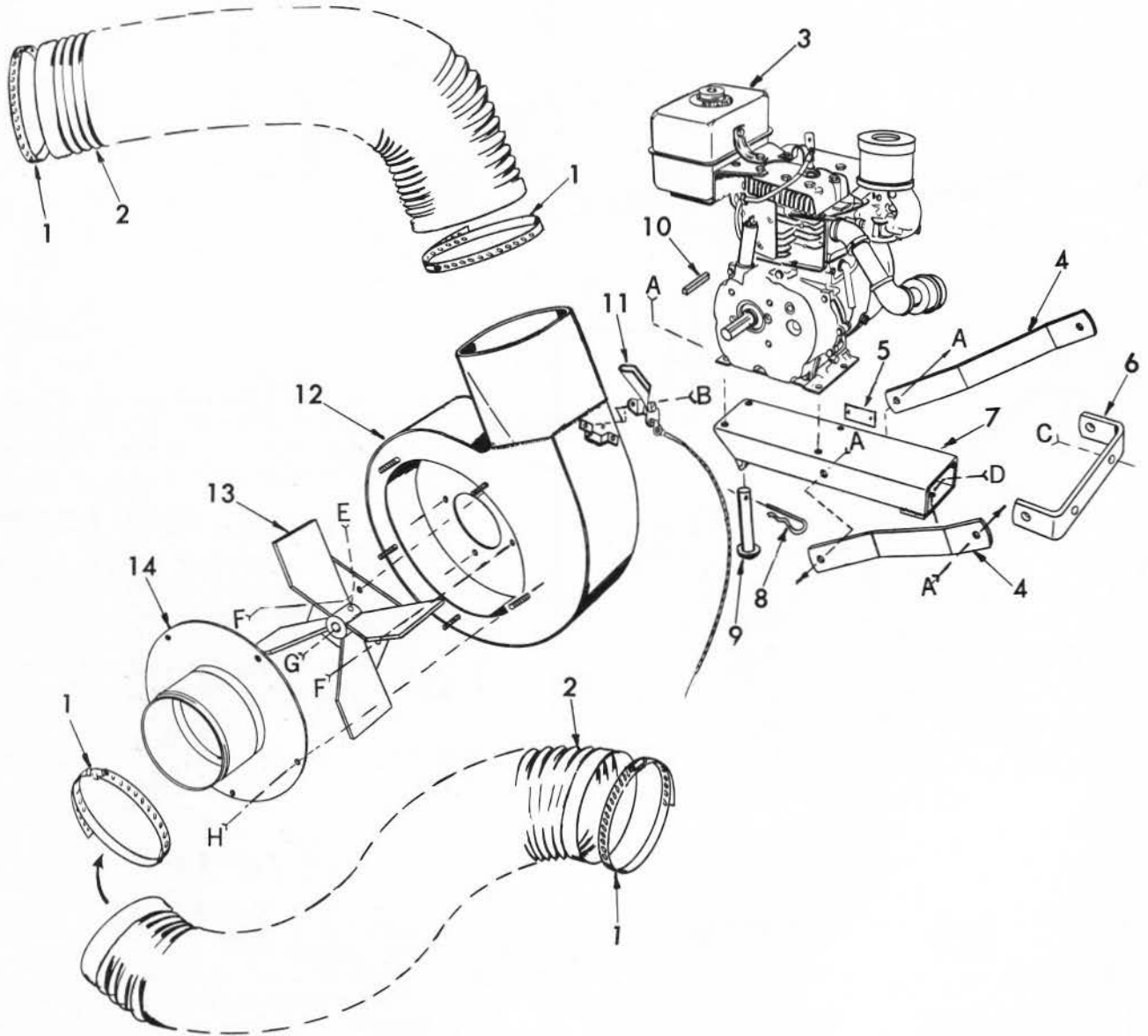
KEY NO. OR LETTER	PART NO.	DESCRIPTION	KEY NO. OR LETTER	PART NO.	DESCRIPTION	
1	1735R	Canopy	13	634A79	Rear Support	
2	7237H	Latch-L. H.	14	1405P	*Lockwasher, 1/4 Internal Tooth	
3	7069H	Bottom Strap-Rear	-	503P	*Nut, 1/4-20 UNC Hex	
4	7136H	Rear Hold-down Clip	15	1002P	*Lockwasher 1/4	
5	7070H1	Bottom Strap-Side	16	1006P	*Lockwasher #10	
6	7144H	Latch-R.H.	17	505P	*Nut, #10 - 24, UNC Hex Hd. Machine	
7	2502P	*Cotter Pin 3/32 x 1/2	18	A	3114P	*Bolt, 1/4 - 20 UNC x 1/2 Hex
8	7068H	Bottom Strap-Front	B	3115P	*Bolt, 1/4 - 20 UNC x 5/8 Hex Hd.	
9	7071H	Top Strap	C	3218P	*Screw, #10 - 24 UNC x 1/2 Hex Hd. Machine	
10	7074H	Chute Deflector	D	3004P	*Bolt, 1/4 - 20 UNC x 1 Hex Hd.	
11	634A465	Front Support				
12	7264H	Side Brace				

\*Standard Hardware Item- -May Be Purchased Locally - Specify Plated

another free manual from www.seartractormanuals.com

# repair parts

VACUUM COLLECTOR  
MODEL NO. 917.25390



# repair parts

## VACUUM COLLECTOR MODEL NO. 917.25390

KEY NO. OR LETTER	PART NO.	DESCRIPTION
1	7101H	Hose Clamp
2	1737R	Flexible Hose
3	634A468	Engine, Craftsman Model No. 143.625082. See Price List 932.00 for Ordering Instructions
4	7078H	Hitch Support Brace
5	-----	Model Number Plate
6	7079H	Hitch Support
7	634A85	Hitch Channel
8	4940M	Retainer Spring
9	1066M	Drilled Rivet
10	6504M	Key
11	7094H	Throttle Control
12	634A160	Blower Housing Assembly
13	634A83	Impeller Complete
14	634A466	Blower Inlet Assembly
15	1004P	*Lockwasher 3/8
16	501P	*Nut, 3/8 - 16 UNC Hex
17	1006P	*Lockwasher #10
18	1000P	*Lockwasher 1/2"
20	1008P	*Lockwasher 5/8
21	506P	*Nut, 5/8 - 11 UNC Hex
22	1003P	*Lockwasher 5/16
A	3023P	*Bolt, 3/8 - 16 UNC x 1 Hex Hd.
B	5501P	*Screw, #10 - 24 UNC x 3/8 Pan Hd. Phillips Cutting
C	3044P	*Bolt, 1/2 - 13 UNC x 1 1/4 Hex Hd.
D	3203P	*Bolt, 5/8 - 11 UNC x 1 1/4 Hex Hd.
E	4511P	*Set Screw, 5/16 - 18 UNC x 3/8 Hex Socket Headless
F	3053P	*Bolt, 5/16 - 24 UNC x 5/8 Hex Hd.
G	3052P	*Bolt, 3/8 - 24 UNC x 1 Hex Hd.
H	3789F	*Nut, Wing
I	2296R	Owners Manual

634x121  
634x122  
634x123

another free manual from [www.searstractormaterials.com](http://www.searstractormaterials.com)

Sears

owners manual

# VACUUM COLLECTOR

MODEL NO.  
917.25390

The Model Number will be found on a plate attached to the Hitch Channel Weldment. Always mention the Model Number when requesting service or repair parts for your Vacuum Collector.

All parts listed herein may be ordered through SEARS, ROEBUCK AND CO. or SIMPSONS-SEARS LIMITED. When ordering parts by mail, selling prices will be furnished on request or parts will be shipped at prevailing prices and will be billed accordingly.

WHEN ORDERING REPAIR PARTS, ALWAYS GIVE THE FOLLOWING INFORMATION AS SHOWN IN THE LIST.

1. The PART NUMBER
2. The PART DESCRIPTION
3. The MODEL NUMBER  
917.25390
4. The NAME OF ITEM—  
Vacuum Collector

When you buy merchandise from Sears you get an extra something that nobody else can offer . . . Sears Service.



Across town or across the country, wherever you live or move in the U.S.A., Sears Service follows you, providing trustworthy, competent service technicians using only Sears specified factory parts.

SEARS SERVICE  
IS AT YOUR SERVICE  
WHEREVER YOU LIVE  
OR MOVE  
IN THE U.S.A.

SEARS, ROEBUCK AND CO. U.S.A.

SIMPSONS-SEARS LIMITED, CANADA