

ASSEMBLY, OPERATING INSTRUCTIONS AND PARTS LIST FOR THREE POINT HITCH

FOR 1966 SUBURBAN AND ALL CUSTOM TRACTORS

MODEL NUMBER 917.60658

The above number is the Model Number of your Three Point Hitch. It will be found on a plate attached to the Lift Lever Bracket. Mention this Model Number when communicating with us regarding the Three Point Hitch or when ordering repair parts.

HOW TO ORDER REPAIR PARTS

All parts listed herein may be ordered through SEARS, ROEBUCK AND CO. or SIMPSONS-SEARS LIMITED. When ordering parts by mail from the mail order house which serves the territory in which you live, selling prices will be furnished on request or parts will be shipped at prevailing prices and you will be billed accordingly.

WHEN ORDERING REPAIR PARTS, ALWAYS GIVE THE FOLLOWING INFORMATION AS SHOWN IN THIS LIST:

1. The PART NUMBER.
2. The PART NAME.
3. The MODEL NUMBER - 917.60658.
4. The NAME of item - Three Point Hitch.

COAST TO COAST NATION-WIDE SERVICE FROM SEARS FOR YOUR THREE POINT HITCH

SEARS, ROEBUCK AND CO. and SIMPSONS-SEARS LIMITED in Canada back up your investment with quick, expert mechanical service and genuine SEARS replacement parts.

If and when you need repairs or service, call on us to protect your investment in this fine piece of equipment.



SEARS, ROEBUCK AND CO.—U.S.A.
SIMPSONS-SEARS LIMITED—CANADA

PRINTED IN U.S.A.

SETTING UP INSTRUCTIONS

FOR SEARS SUBURBAN AND CUSTOM RIDING TRACTOR

INTRODUCTION

The 3-Point Hitch will fit 1966 Suburban Riding Tractors and all Sears Custom Riding Tractors. It is required for attaching all tillage implements.

Each Hitch is given a thorough inspection before shipment; however, it is very important that it be again checked at the time of receipt to ascertain if damage has occurred in transit. Your shipment contained the following bundles:

1 Catalog No. 9931 - Bundle No. 606X80

Setting Up Instructions should be studied very closely before beginning to assemble your Hitch. A letter in parentheses in the following instructions refers to an arrow in an adjoining Figure (illustration) unless otherwise stated. When R.H. (Right Hand) or L.H. (Left Hand) are used it should be understood to mean from a position behind and facing the Tractor or direction of travel.

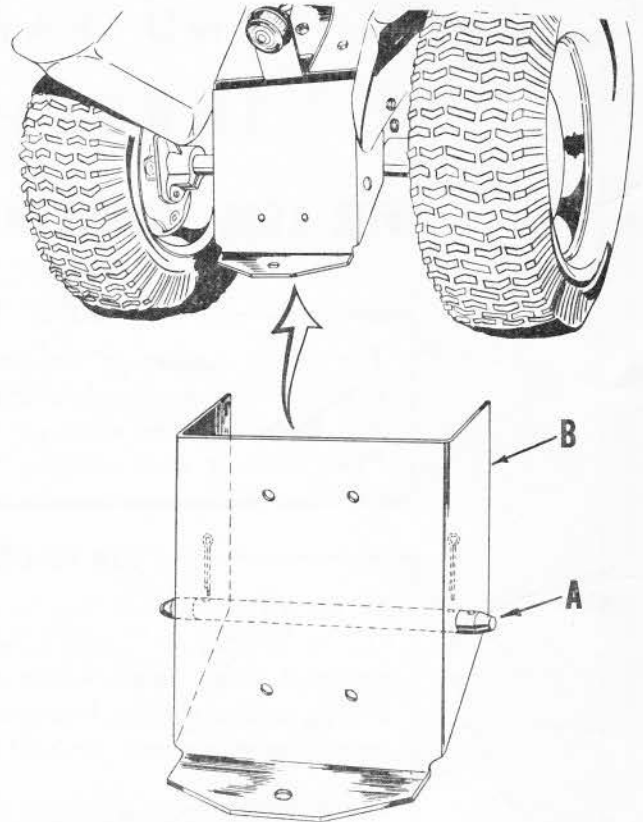


FIG. B.

3. Slip lower link pin (A), through holes in sides of drawbar (B), as shown. Secure by inserting two cotters in inside holes.

NOTE: Cotters are inside and under drawbar. Slip lower link pin through hole in disc of rear wheel and holes in drawbar. If lower link pin cannot be inserted this way, remove one rear wheel and support tractor firmly to assemble pin to drawbar.

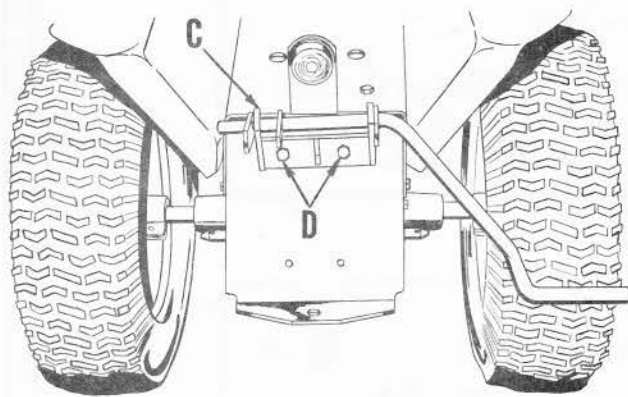


FIG. A

1. Remove parts from carton, unwrap and lay out in readiness for assembly to tractor.
2. Bolt lever and bracket (C), to upper holes in drawbar as shown, with two $\frac{1}{2} \times 1-\frac{1}{4}$ hex head bolts (D), lock washers and hex nuts found in bag of parts. Tighten nuts securely.

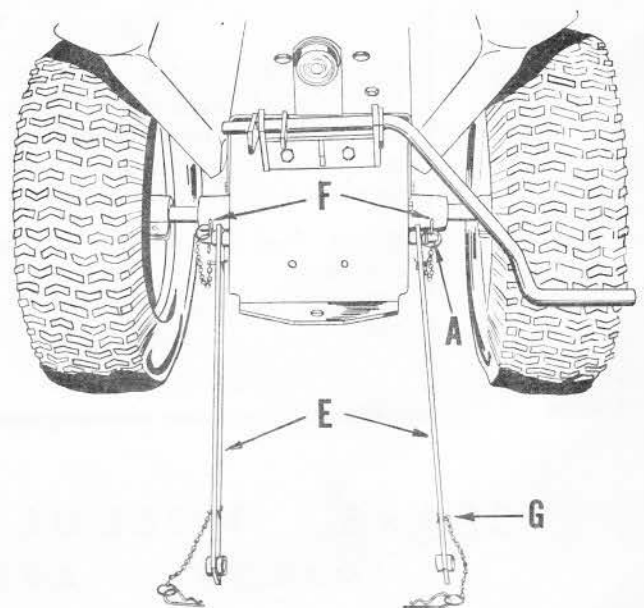


FIG. C.

4. Assemble bottom links and bushing (E), to lower link pin (A). Secure bottom links (E), to lower link pin (A), by inserting spring retainers (F) through holes in outer ends of lower link pin (A). Refer to Fig. C.

NOTE: Spread ends of cotters (G) securing chain and ring assemblies as shown in Fig. D.

5. Assemble R.H. adjustable lift link (H) "turn-buckle with spring", to R.H. bottom link (D), and outer hole in arm on lever and bracket (C), as shown. Secure with cotters found in bag. NOTE: Offset in lift links to top. Refer to Fig. (D).

6. Assemble L.H. lift link (I), to L.H. side in like manner. Refer to Fig. (D). Secure with cotters shipped in bag.

7. Secure top link (J), to lever and bracket (C), and secure with cotter shipped in bag.

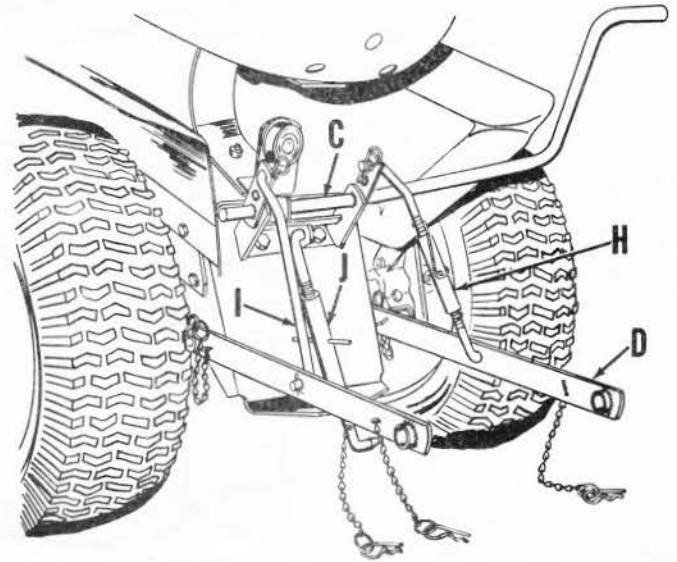


FIG. D



Fig. E shows Plow Attachment Mounted.

Fig. E

SEARS THREE POINT HITCH -- MODEL NUMBER 917.60658

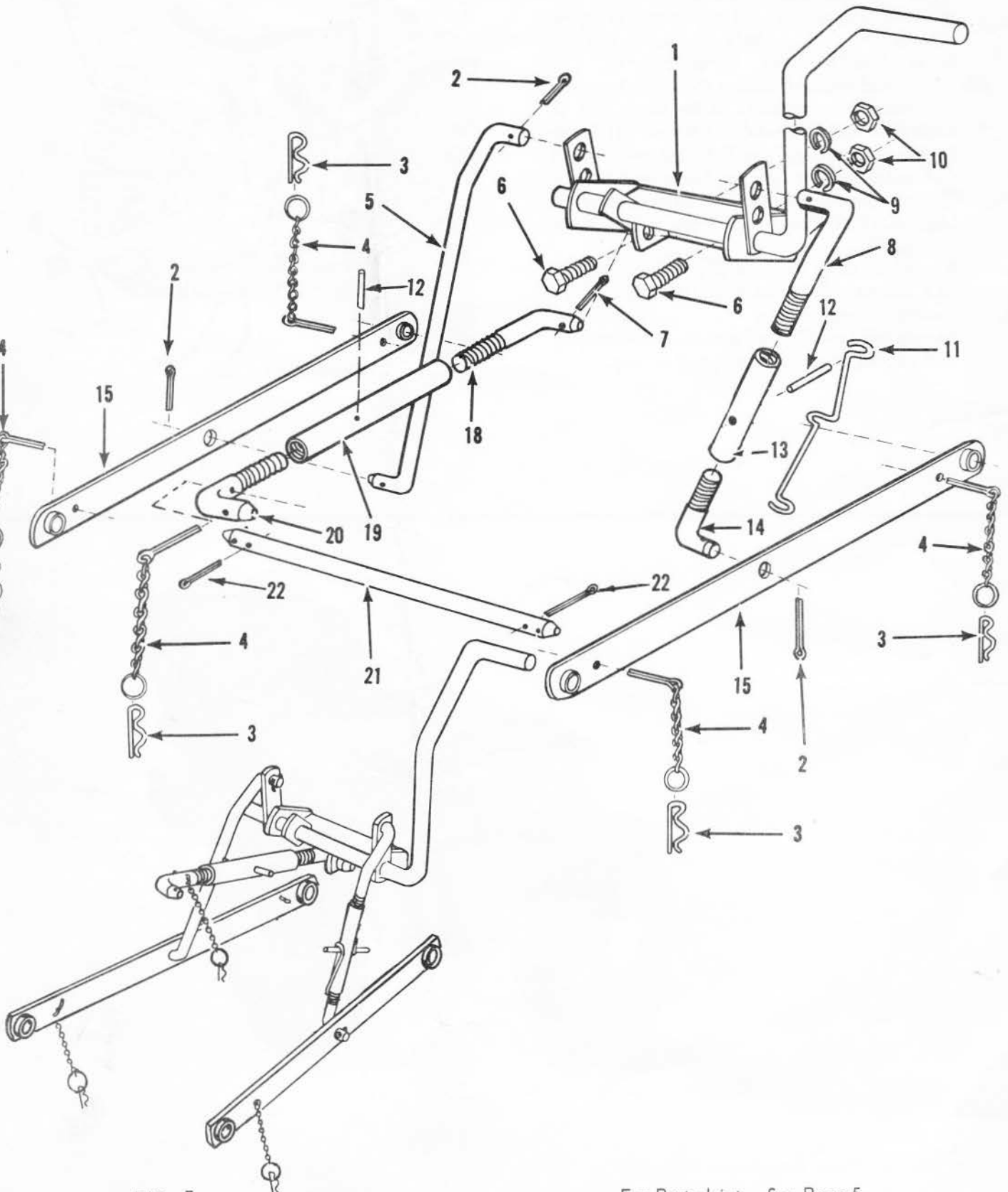


FIG. F

For Parts List -- See Page 5.

another free manual from www.searstractormanuals.com

SEARS THREE POINT HITCH -- MODEL NUMBER 917.60658

PARTS LIST

KEY NO.	PART NO.	DESCRIPTION	KEY NO.	PART NO.	DESCRIPTION
1	626A52	Lever and Bracket	12	9710M	Roll Pin (2 Required)
2	120169	*Cotter Pin 5/32 x 1 Cad. Plated (4 Required)	13	606A108	Turn Buckle and Spring (includes Key No. 11 and 12)
3	4940M	Retainer Spring (5 Required)	14	1408H	Lower Adjustment Link
4	5012H	Chain, Ring and Cotter (5 Required)	15	606A363	Bottom Link and Bushings
5	1492H	Lift Link - L.H.	18	1493H1	Top Link - L.H.
6	120426	*Bolt, Hex 1/2 x 1-1/4 - 13.Cad. Plated (2 Required)	19	606A137	Top Link Turnbuckle extended (includes Key No. 12)
7	456723	*Cotter Pin 3/16 x 1 Cad. Plated	20	1494H1	Top Link R.H.
8	1491H	Upper Adjustment Link	21	5316H	Lower Link Pin
9	120384	*Lock Washer 1/2 Cad. Plated (2 Required)	22	456723	* Cotter Pin 3/16 x 1 Cad. Plated (2 Required)
10	120378	*Hex Nut 1/2 - 13 Cad. Plated (2 Required)	---	606H181	Bag of Parts (Includes Items marked *)
11	1592H	Turnbuckle Spring	---	917 60658	Operating Manual and Parts List